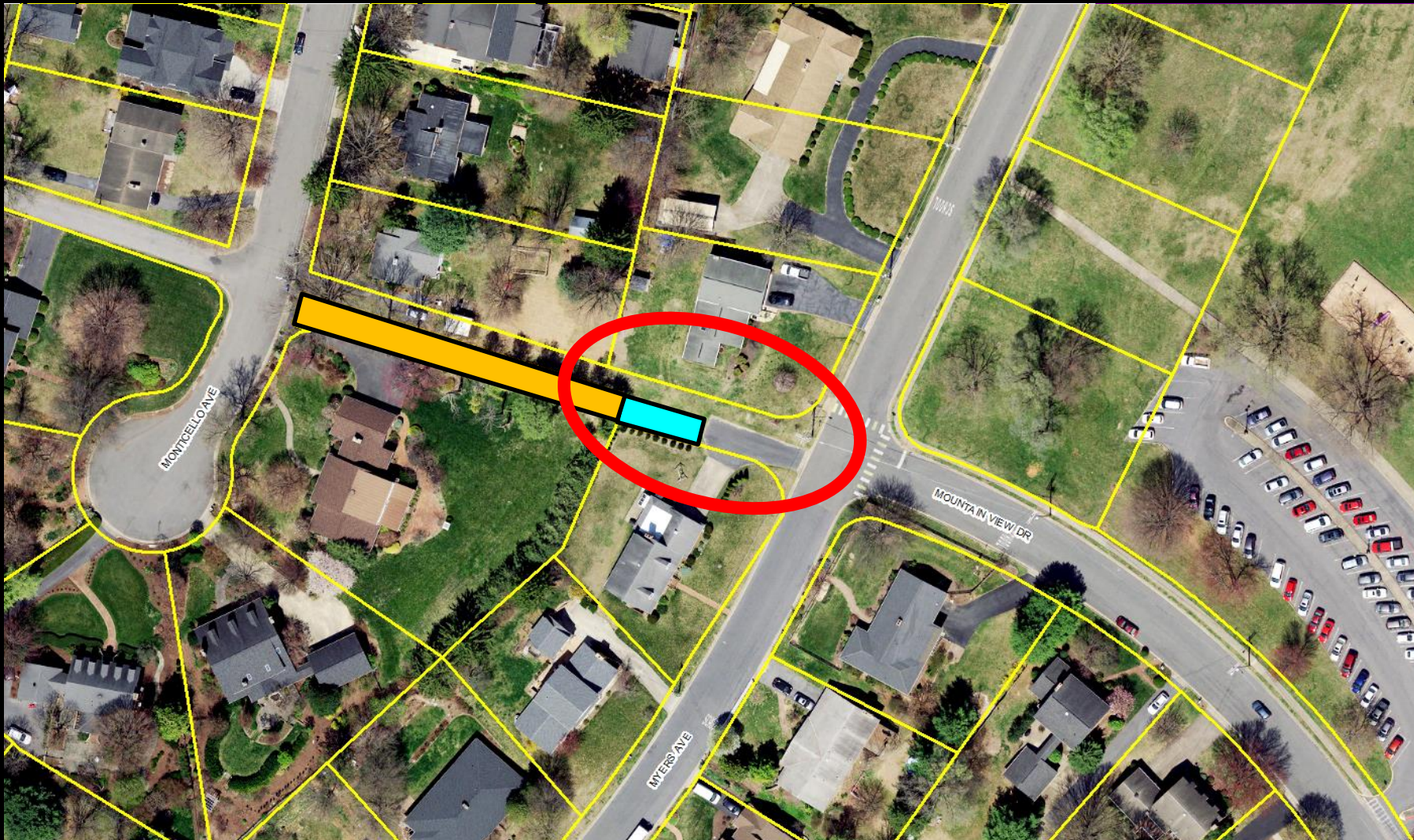
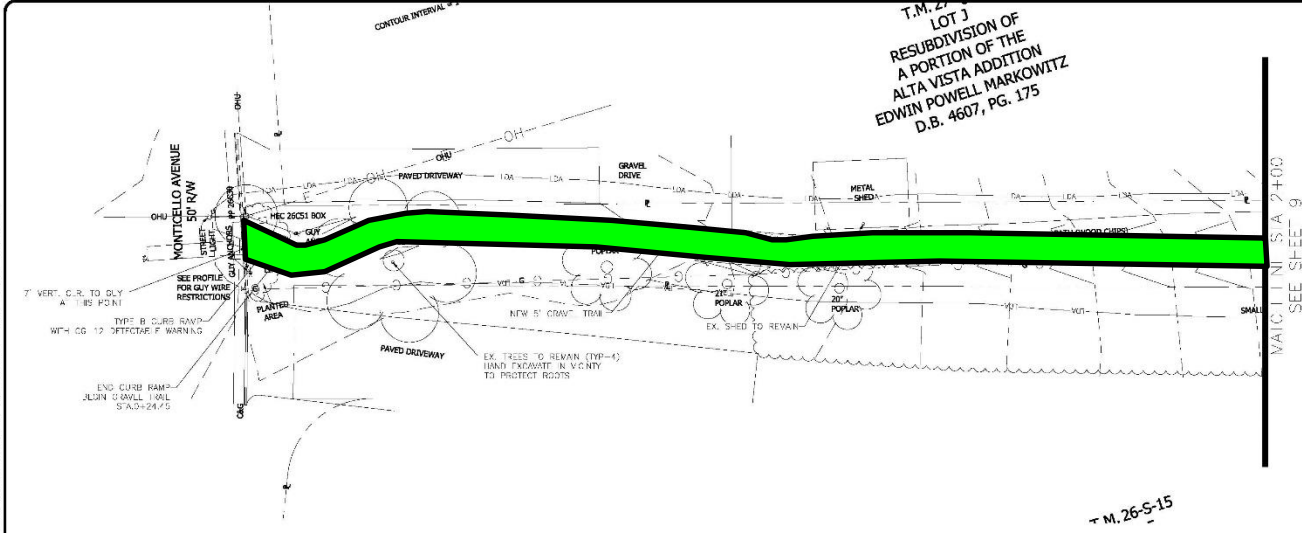


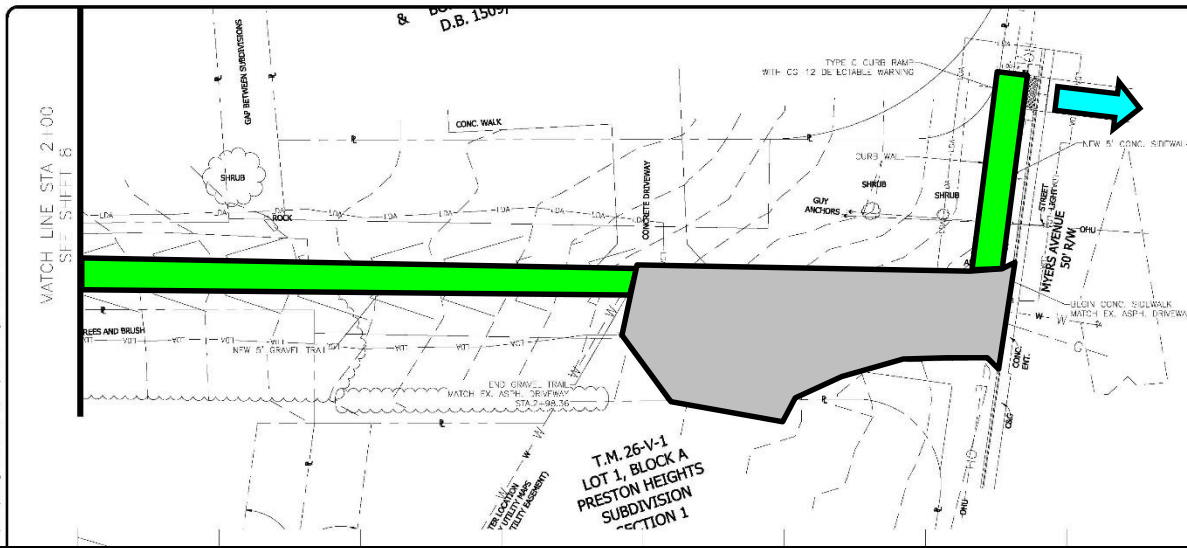
Closing Portion of Undeveloped Right-of-Way (Between Myers Ave & Monticello Ave)



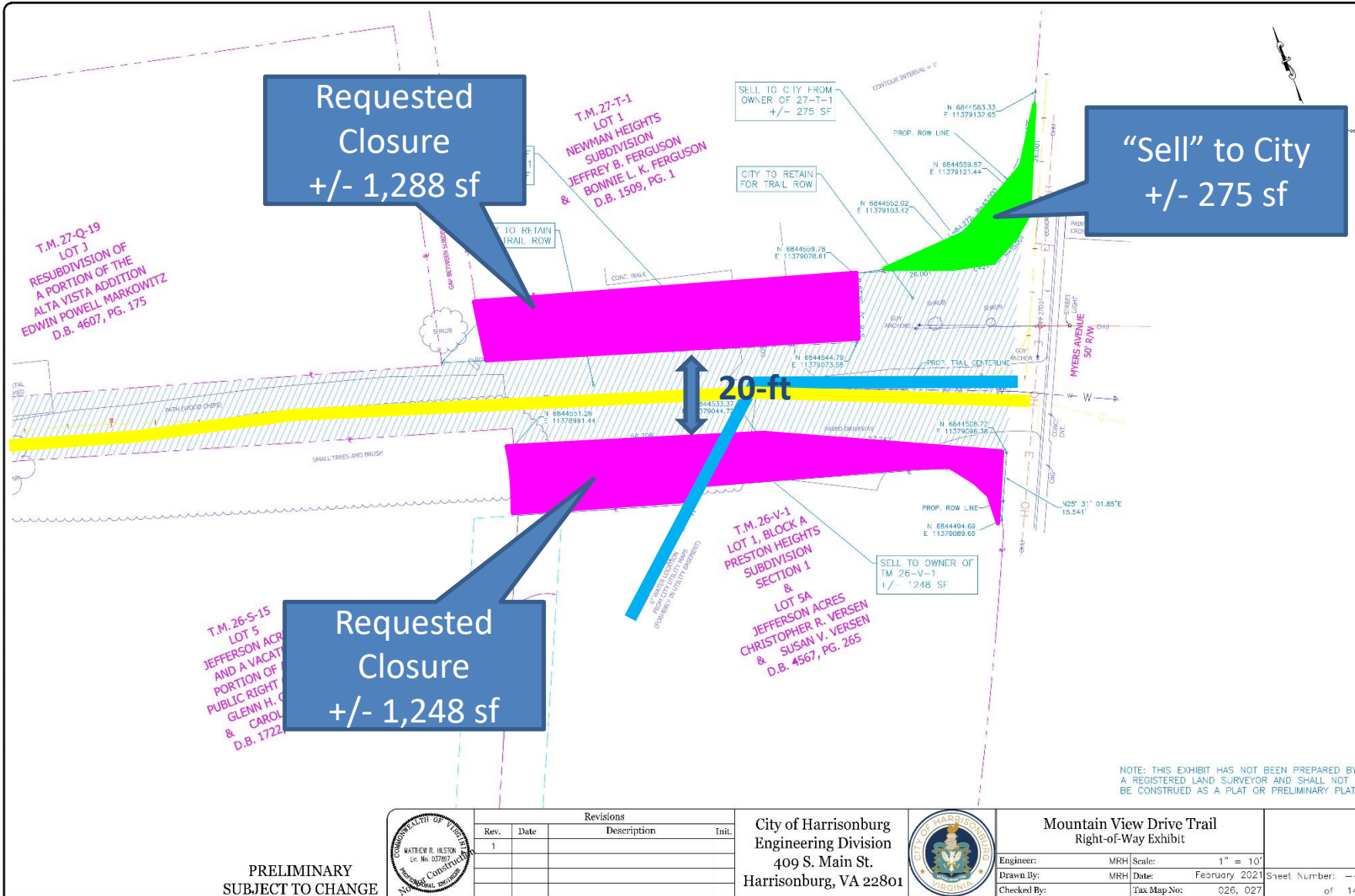
scpt: 3).dwg Plotted: 2/11/2021 By: Matthew Huston



scpt: 3).dwg Plotted: 2/11/2021 By: Matthew Huston



U:\engineering projects\comm dev\spotswood elementary\h-dwg\base maps\BM-Spotswood Elementary Concept 3.dwg Plotted: 2/11/2021 By: Matthew Huston



PRELIMINARY
SUBJECT TO CHANGE

| Revisions | | | |
|-----------|------|-------------|-------|
| Rev. | Date | Description | Init. |
| 1 | | | |
| | | | |
| | | | |

City of Harrisonburg
Engineering Division
409 S. Main St.
Harrisonburg, VA 22801



| Mountain View Drive Trail Right-of-Way Exhibit | | | |
|---|-----|---------------|---------------|
| Engineer: | MRH | Scale: | 1" = 10' |
| Drawn By: | MRH | Date: | February 2021 |
| Checked By: | | Tax Map No: | 026, 027 |
| | | Sheet Number: | -- of 14 |

Recommendation

Staff and Planning Commission (7-0) recommends approval of the alley closing request as presented, including to reserve easements for the public water main and gas main, if needed.





























