

Small Cell Wireless Facilities Ordinance

- ▶ Mandated by Virginia law and FCC ruling
- ▶ Allows “co-location” of small cells on existing poles
- ▶ Allows installation of new poles
- ▶ Sets fee schedule, review process, and allows Public Works to set reasonable design standards

Examples of the AT&T Small Cell Equipment



Existing Small
Cell(Costco
Parking Lot)

Small Cell Design Overview

- Example light pole design on private property light pole.
- 7 • Equipment includes the 2ft antenna, 3ft radio enclosure, power meter/disconnect and internal cabling.

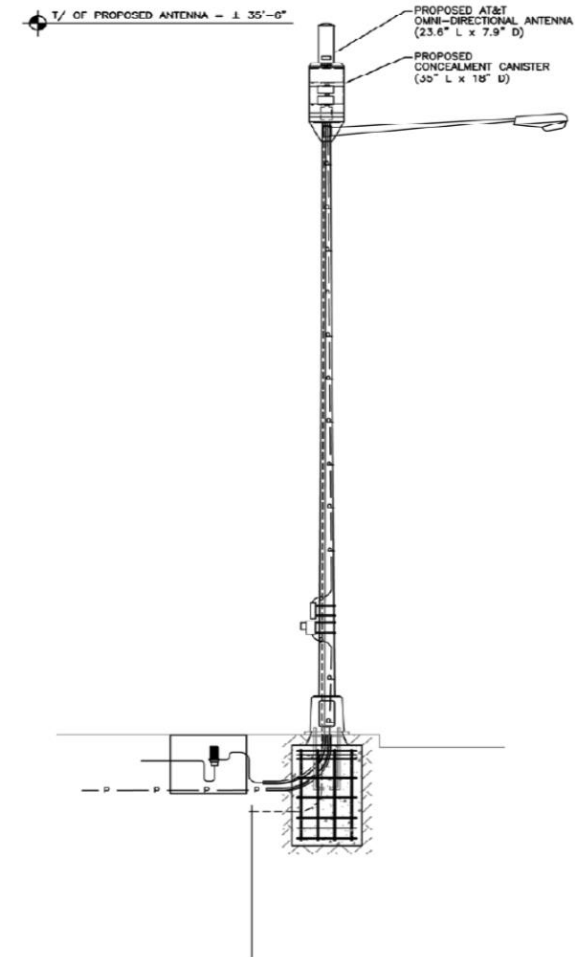




Rendering of Proposed Small Cell on E Water St (near Urban Exchange)

Example of co-location

Examples of the AT&T Small Cell Equipment Options



Small Cell Design Option

- Attachment to existing metal streetlight in ROW.
- Top mounted canister antenna and equipment shroud for components and associated cabling (power and fiber). Power disconnect and power meter mounted lower on pole. Requires in ground handhole adjacent the pole.