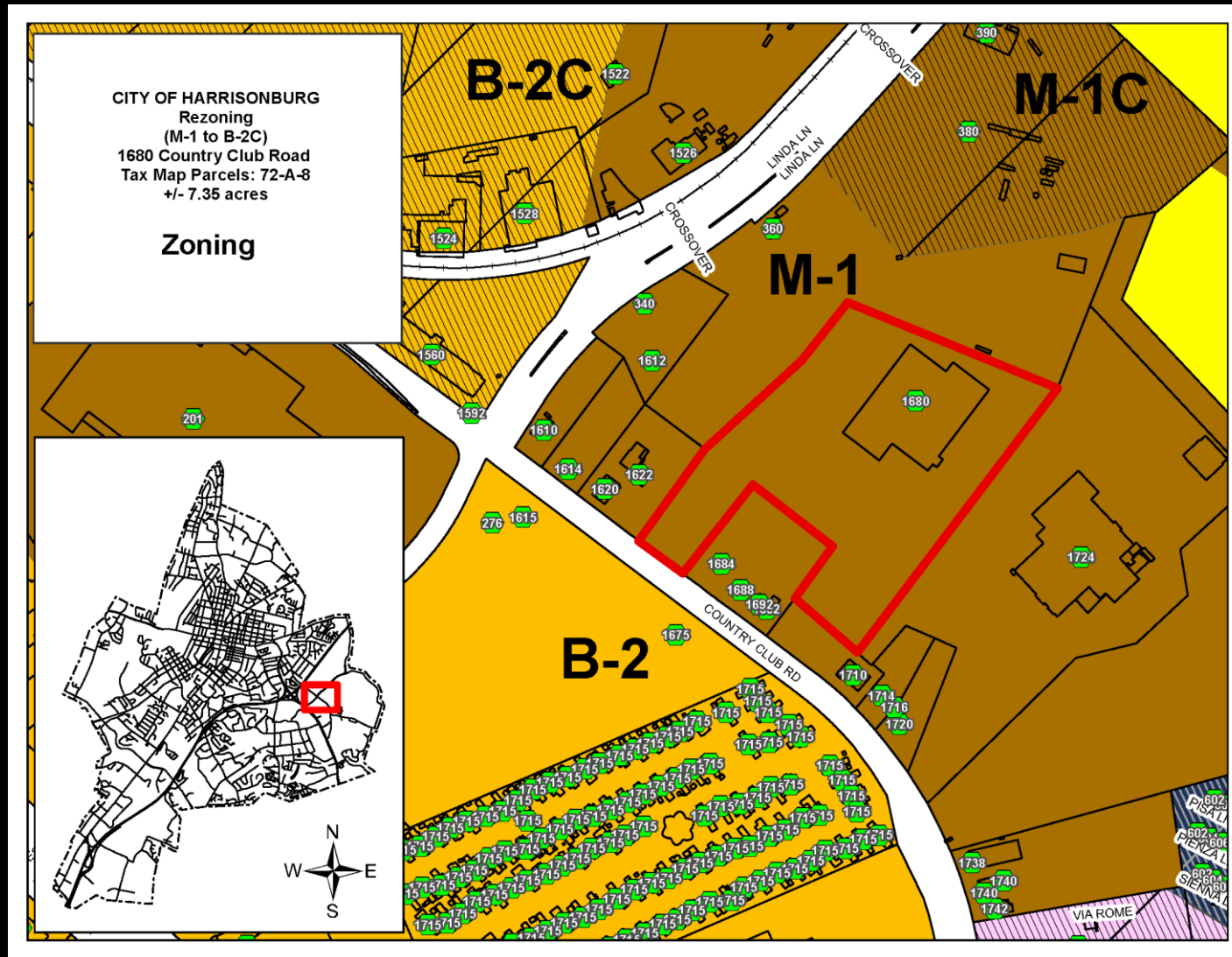
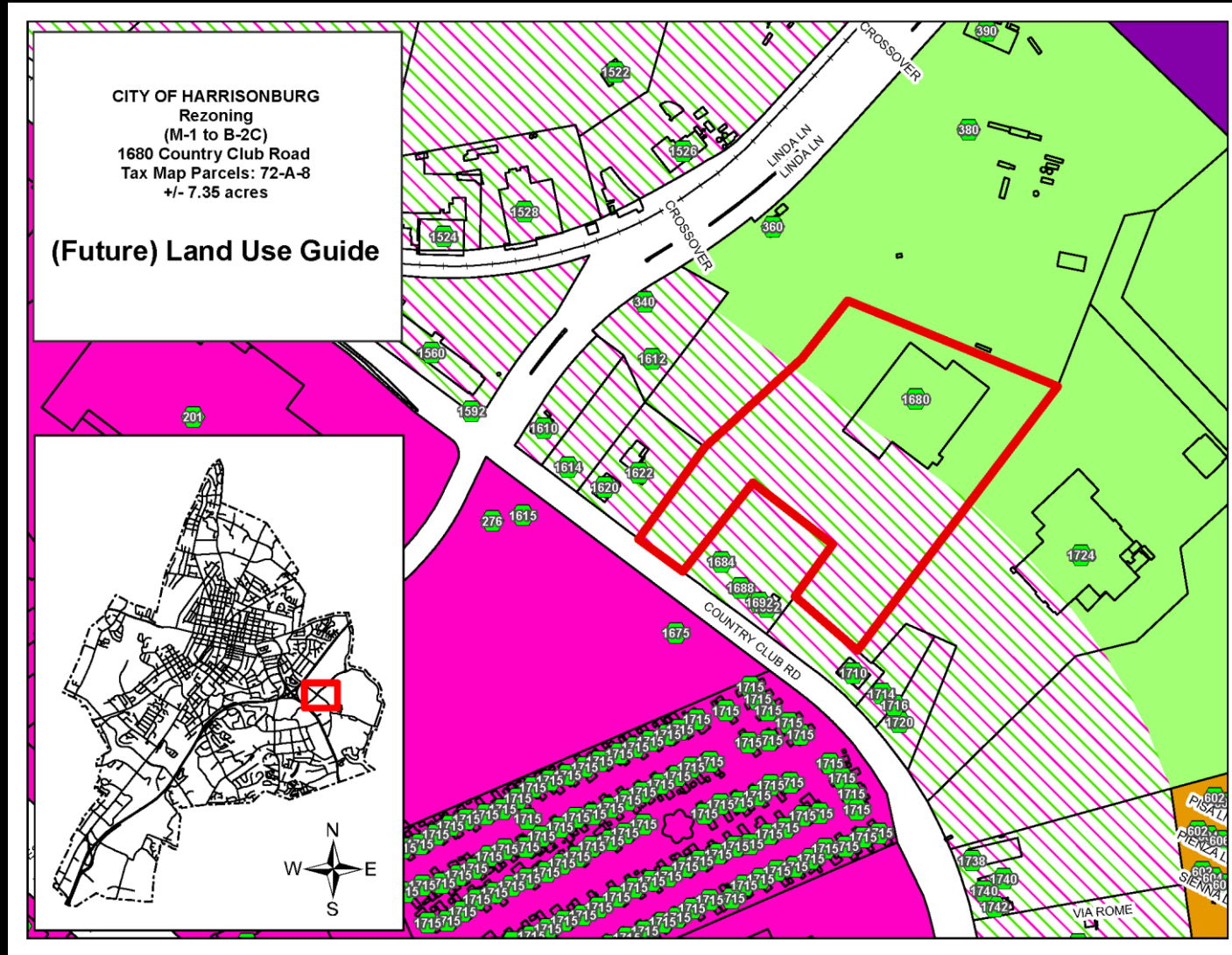
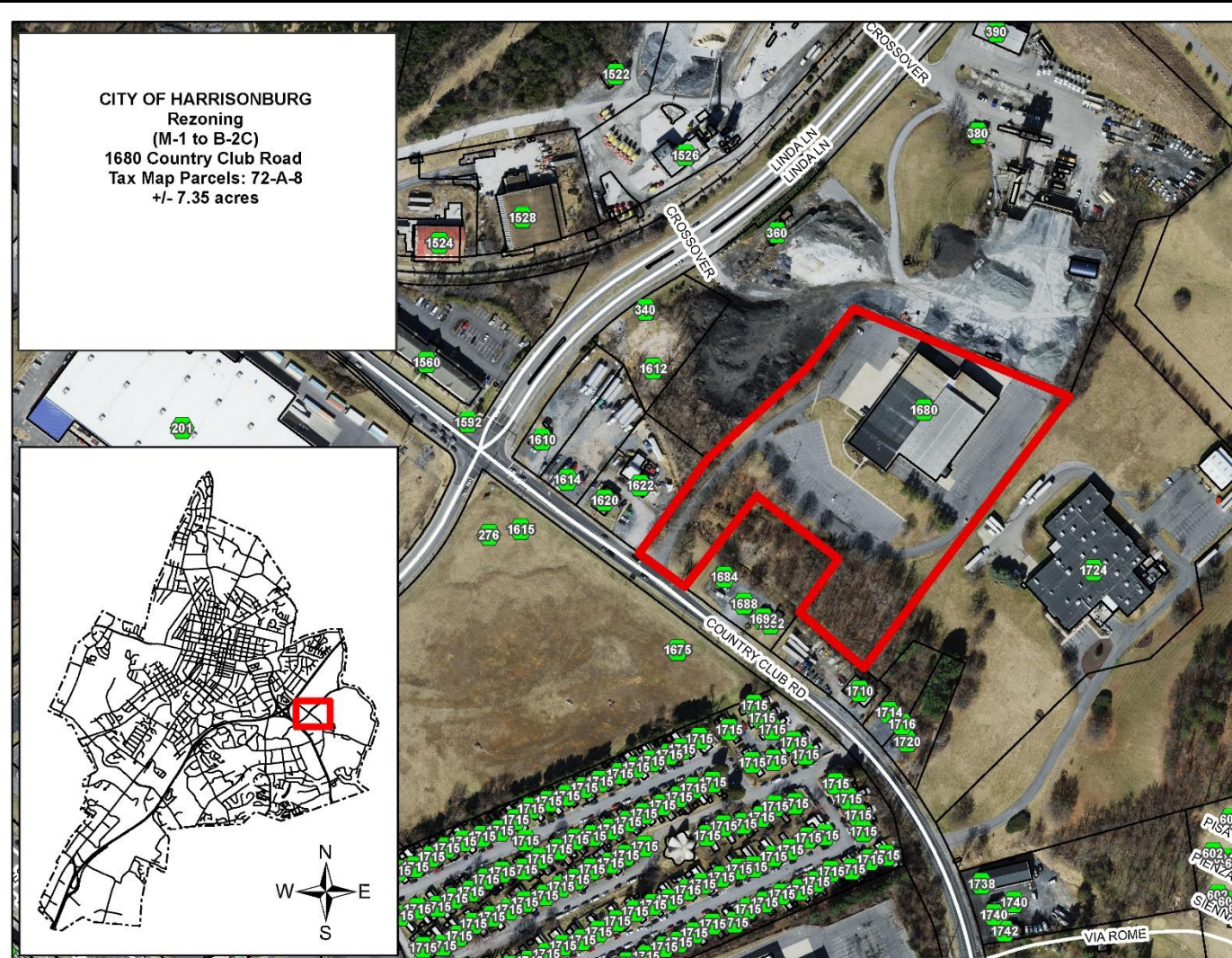


Rezoning – 1680 Country Club Road (M-1 to B-2C)



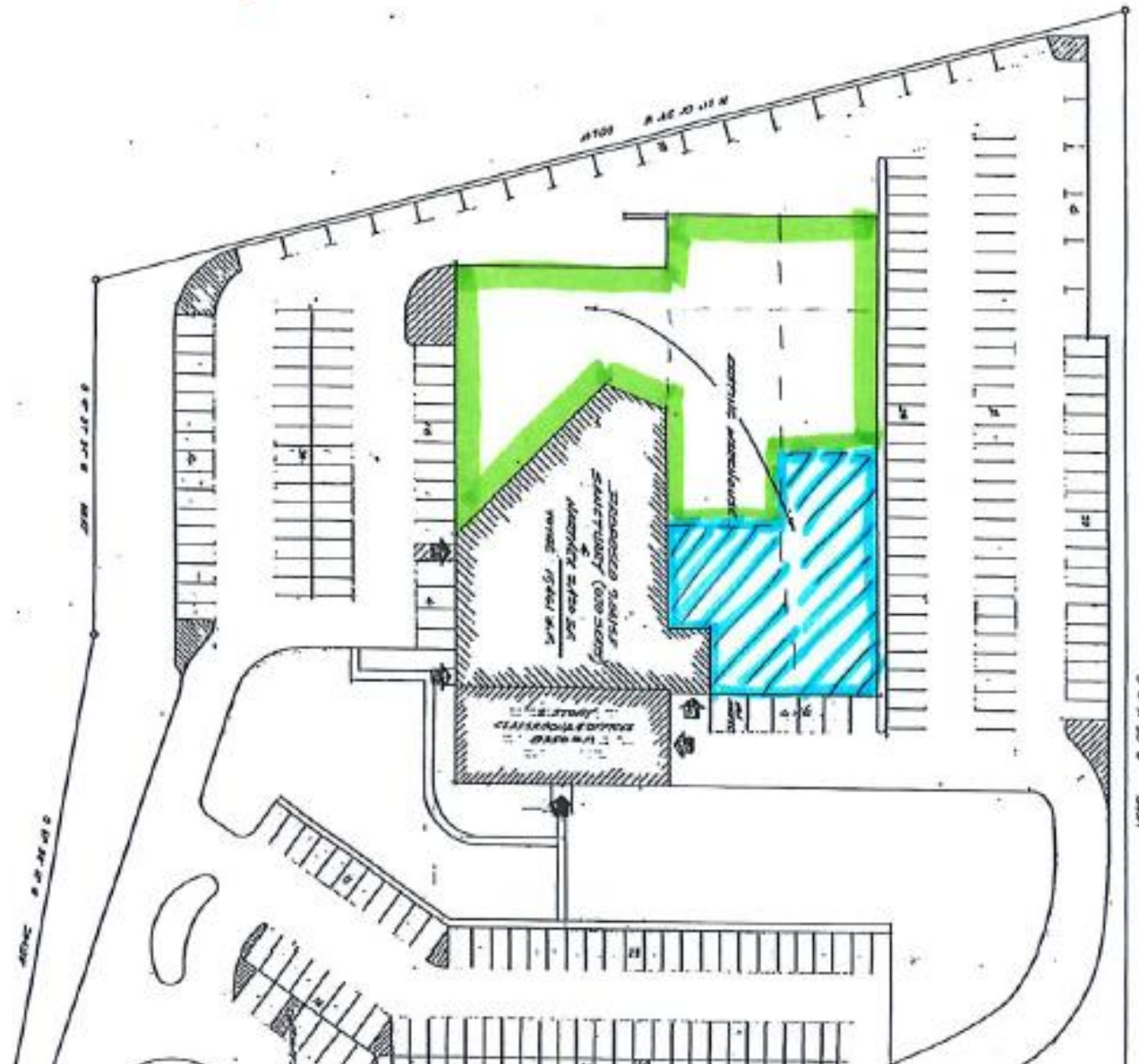


Rezoning – 1680 Country Club Road (M-1 to B-2C)



- **April 2009:** A SUP to operate a church was approved for Valley Church with conditions.
- **December 2019:** Divine Unity Community Church bought the property for their church operations.
- Divine Unity would now like to expand their church functions.

Green outline represents unfinished space
Blue outline represents Children's space



Summarized Proffers

- **Proffer 1:** Prohibits certain uses allowed in B-2.
- **Proffer 2:** Traffic generation.
- **Proffer 3:** Dedication of right-of-way.

Recommendation

Staff and Planning Commission (5-0) recommends approval of the rezoning request.