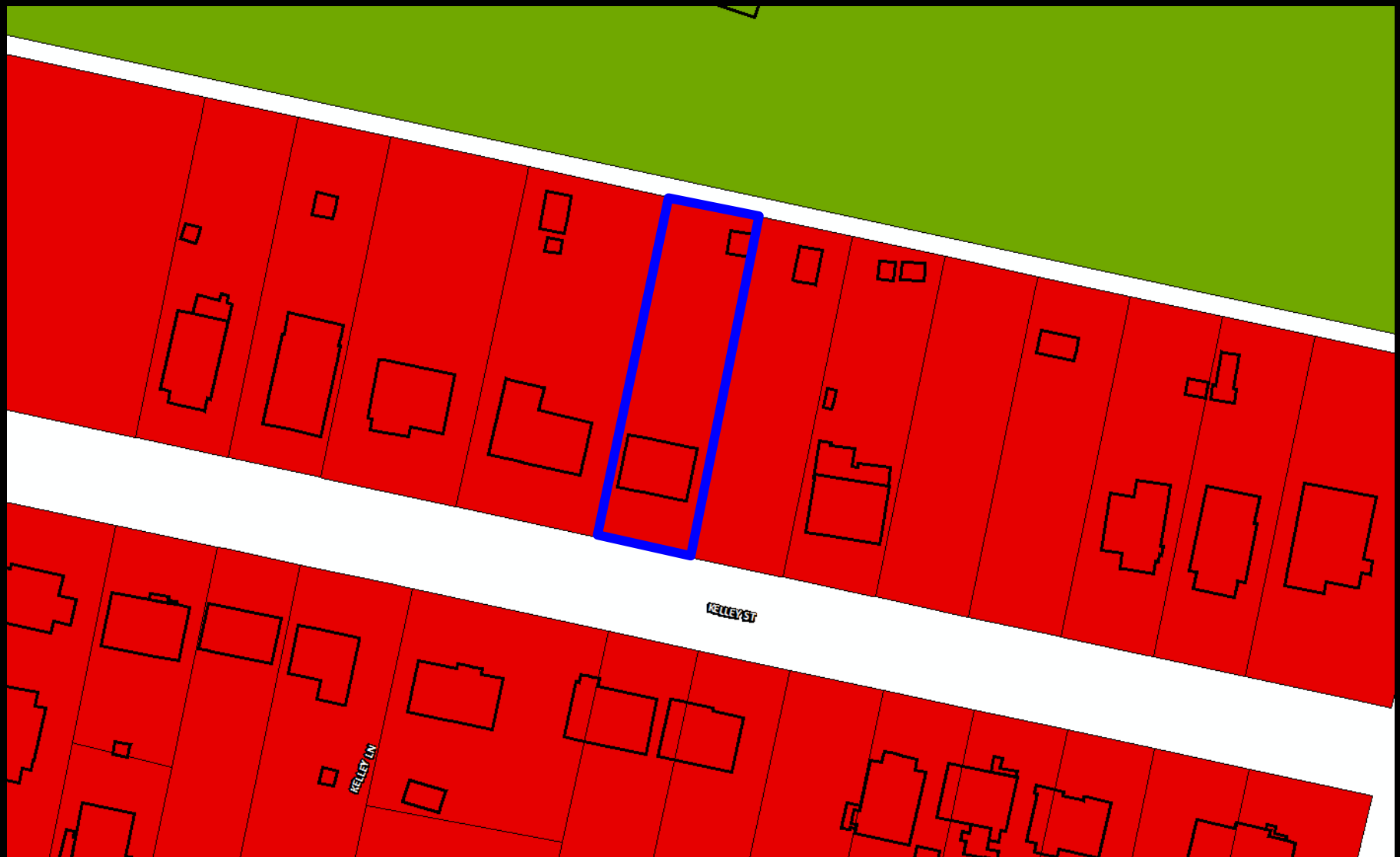


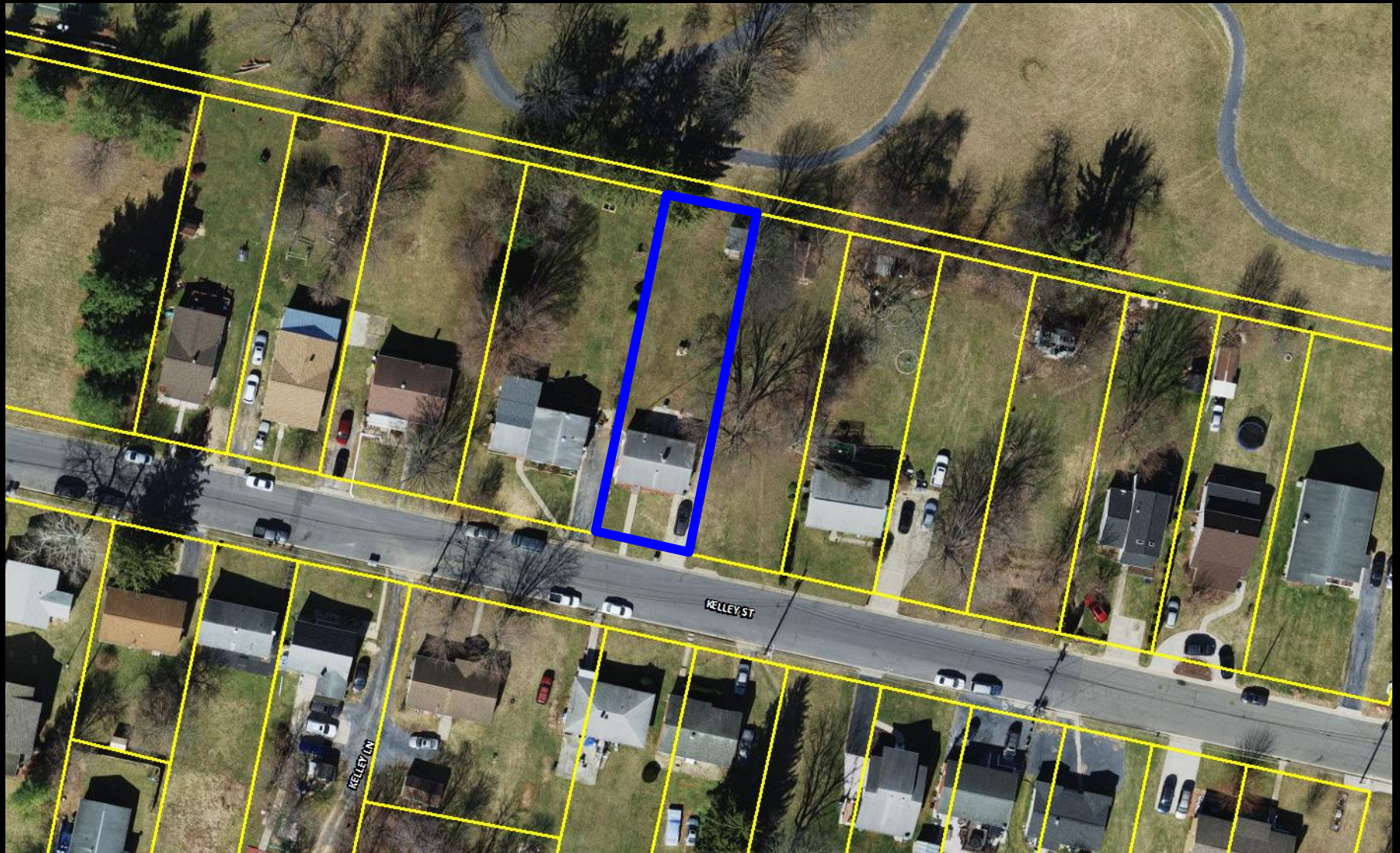
Rezoning – 448 Kelley Street (R-2 to R-8C)



Rezoning – 448 Kelley Street (R-2 to R-8C)



Rezoning – 448 Kelley Street (R-2 to R-8C)





Proffer

- The minimum setback for principal structures along Kelley Street shall be 20 feet.

Recommendation

Staff and Planning Commission (4-0)
recommends approval of the rezoning
request.