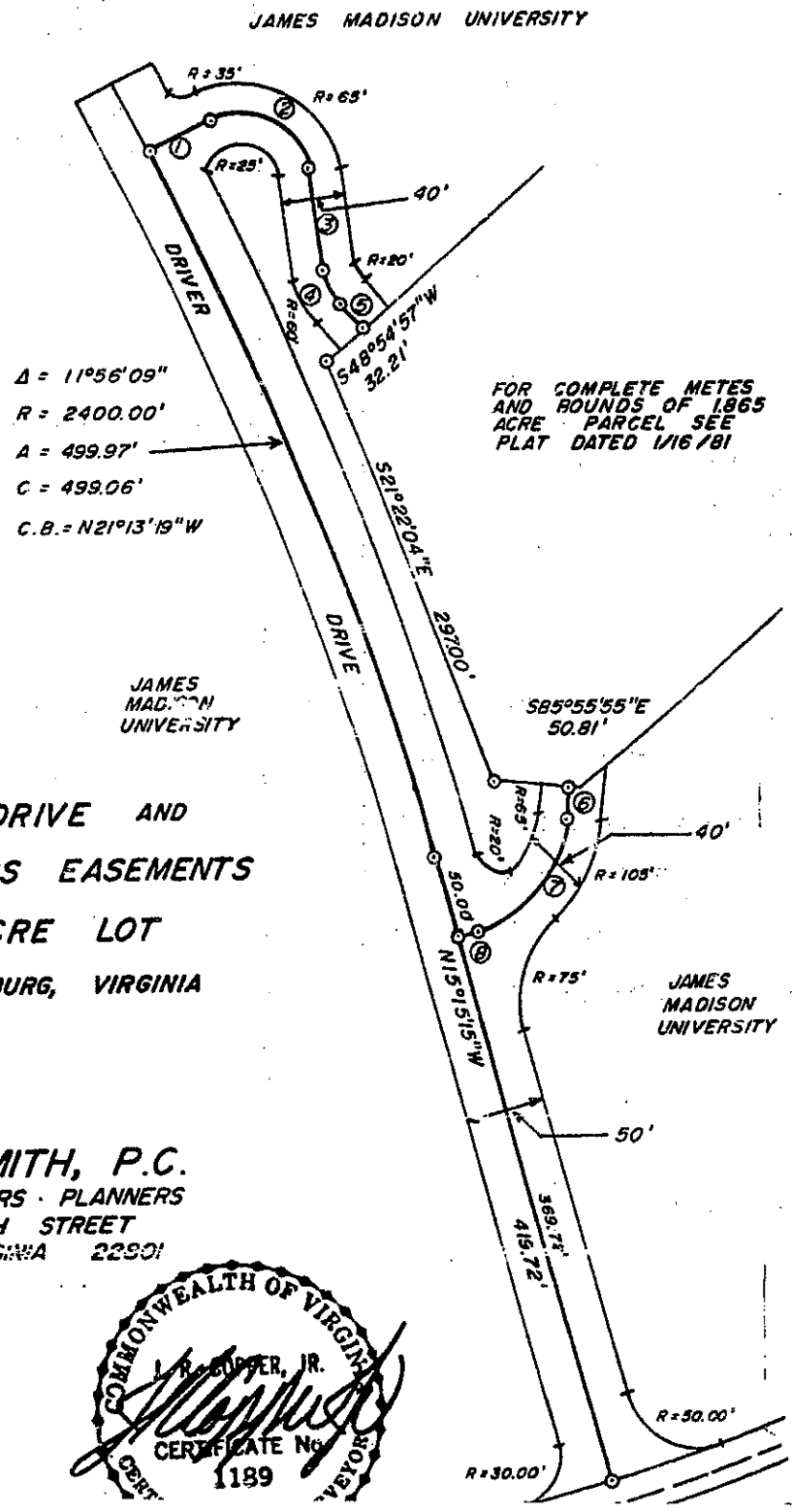


- ① N 62°48'36"E 42.50'
- ② Δ = 108°30'00" R = 45.00' A = 85.22' C = 73.04' C.B. = S 62°56'24"E
- ③ S 8°41'24"E 66.00'
- ④ Δ = 32°00'00" R = 40.00' A = 22.34' C = 22.05' C.B. = S 24°41'24"E
- ⑤ S 40°41'24"E 24.09'
- ⑥ S 8°44'45"W 22.25'
- ⑦ Δ = 66°00'00" R = 85.00' A = 97.91' C = 92.55' C.B. = S 41°44'45"W
- ⑧ S 74°44'45"W 14.00'

BK 742 P00025



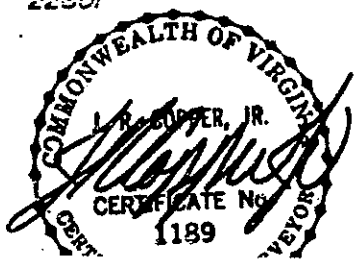
Δ = 11°56'09"
 R = 2400.00'
 A = 499.97'
 C = 499.06'
 C.B. = N 21°13'19"W

FOR COMPLETE METES
 AND BOUNDS OF 1865
 ACRE PARCEL SEE
 PLAT DATED 1/16/81

PLAT OF A
 50' EASEMENT
 ALONG DRIVER DRIVE AND
 TWO 40' ACCESS EASEMENTS
 TO A 1865 ACRE LOT
 CITY OF HARRISONBURG, VIRGINIA

SCALE 1" = 100'
 OCTOBER 17, 1984

COPPER & SMITH, P.C.
 SURVEYORS · ENGINEERS · PLANNERS
 1041 SOUTH HIGH STREET
 HARRISONBURG, VIRGINIA 22901



LEGEND

- = IRON PIN
- = IRON PIN SET
- = POST
- ⊙ = POINT
- x— = FENCE LINE

COMMONWEALTH OF VIRGINIA
THE VISITORS OF JMU
DB 235 PG 342
TM 86-D-1

COMMONWEALTH OF VIRGINIA
THE VISITORS OF JMU
DB 974 PG 160
TM 85-A-3

COMMONWEALTH OF VIRGINIA
THE VISITORS OF JMU
DB 235 PG 342
TM 86-D-1

CITY OF HARRISONBURG
RESOURCE RECOVERY PLANT
DB 742 PG 20
DB 2426 PG 112
TM 86-D-2

LINE TABLE		
LINE	LENGTH	BEARING
L1	100.72	S41°16'40"W
L2	33.00	N67°12'46"W
L3	105.17	N45°56'43"E
L4	23.61	S64°21'56"E
L5	103.10	N36°40'31"W
L6	68.34	N18°42'29"W
L7	87.61	N45°05'00"E
L8	14.94	N78°29'40"E
L9	13.13	S64°18'48"E
L10	85.41	S39°40'30"E
L11	28.72	S03°06'48"W
L12	70.78	S22°07'34"W
L13	33.51	S02°00'03"E
L14	20.98	S67°12'46"E
L15	52.07	S84°31'46"W

AREAS:
PARCEL 1 = 0.0629 AC
PARCEL A1 = 0.4316 AC
REVISED RESOURCE RECOVERY LOT = 3.3297 AC

NOTE:
DASHED LOT LINES ARE HEREBY VACATED
UPON RECORDATION OF THIS PLAT

SCALE: 1" = 100'

DESIGNED BY	DATE	
RLS	SEPT 2005	
DRAWN BY	DATE	
DLC	SEPT 2005	
CHECKED BY	DATE	
RLS	SEPT 2005	
SHEET	BLOCK	LOT
86	D	2

HARRISONBURG RESOURCE RECOVERY LOT

Project #S9705

MINOR SUBDIVISION SHOWING
LAND EXCHANGE AND ADJACENT
TRANSFER BETWEEN CITY OF
HARRISONBURG AND VISITORS OF
JAMES MADISON UNIVERSITY

DIVISION OF ENGINEERING
CITY OF HARRISONBURG
409 SOUTH MAIN STREET
HARRISONBURG, VA 22801

