





- Traffic Barricade (some only there after FM)
- Potential volunteer locations
- Electrical hookups
- Shuttle drop off/pick up

- A = Art Vendor (20)
- B = Business/Social Service Networking (50)
- G = global Village (10)
- Food = Food trucks/vendors (12)



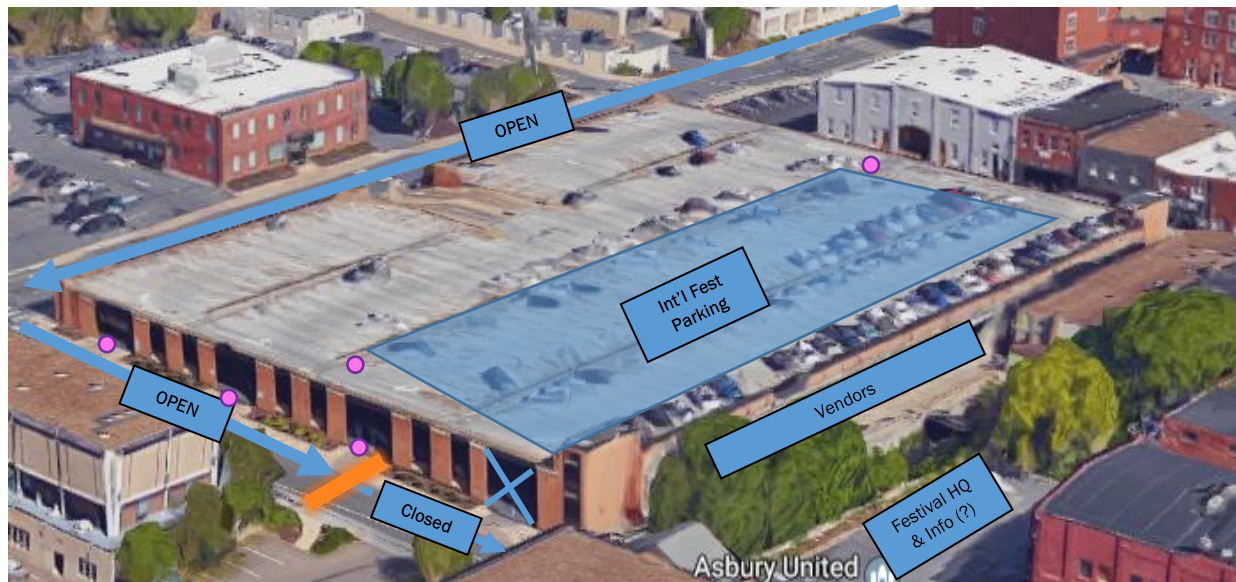
### Water Street Parking Garage

Top Level: 75 Parking spaces – Vendor Only

Bottom Level: 107 Parking spaces – Handicap and HOV 4 only

*Will be patrolled by volunteers*

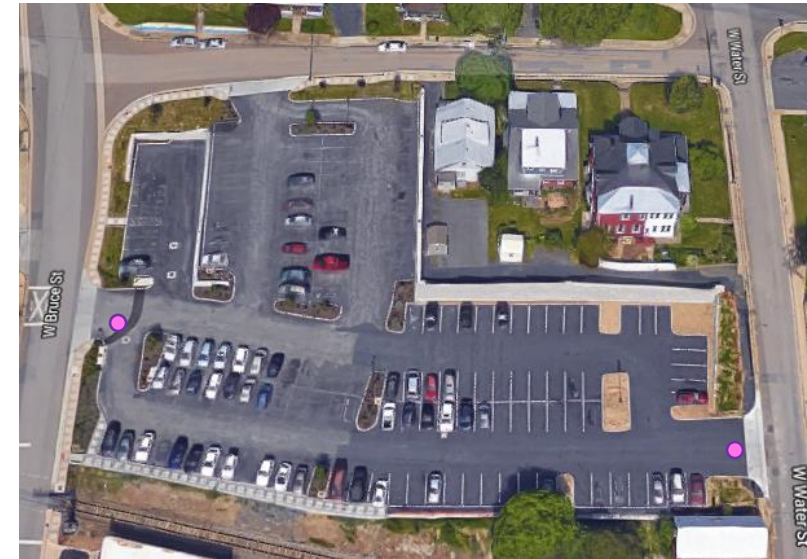
**Accessible via Liberty St**



### Ice House Lot

Approximately 170 Parking Spaces

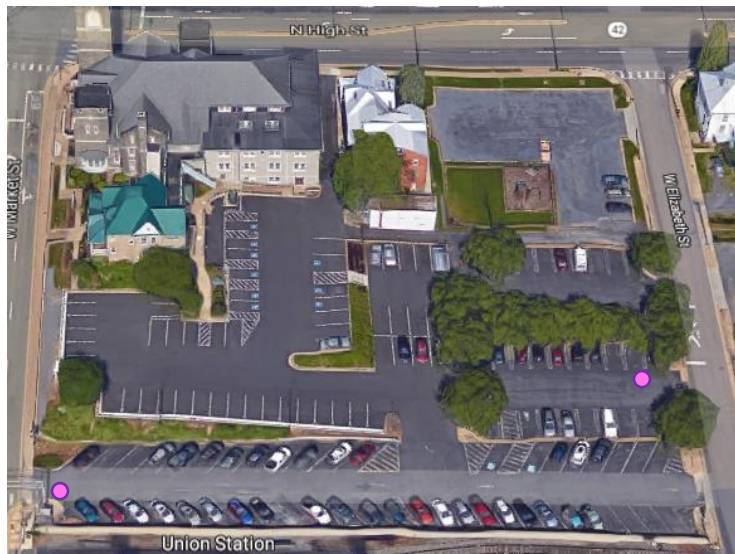
**Accessible via West Water St and West Bruce St**



### Community Mennonite Lot

Approximately 120 Parking Spaces

**Accessible via West Elizabeth St and West Market St**



### Other Available Parking Lots

Newman Avenue Parking – Approximately 60 spots

Elizabeth Street Parking Garage – Approximately 160 spots

Muhlenberg Lutheran Church – Approximately 60 spots

### Total Parking Downtown:

Handicap – Approximately 120 spots

HOV 4 – Approximately 160 spots

Other – Approximately 570 spots

Total: 850 spots

### Parking lots not in downtown area (not included in downtown total count):

Grace Street Parking Garage – 414 spots

JMU Memorial Hall (Memorial Hall Parking Lot) – 272 spots