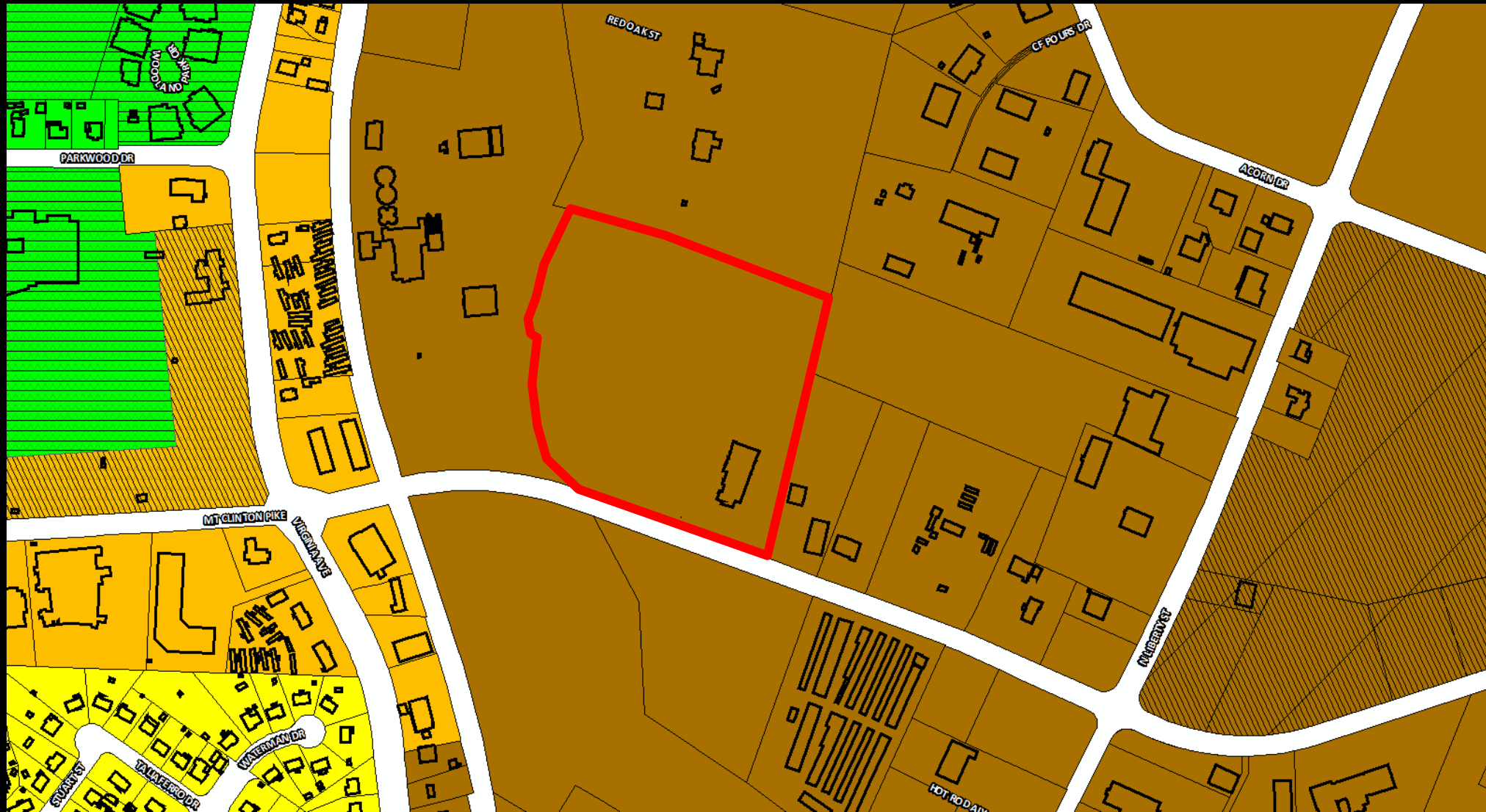
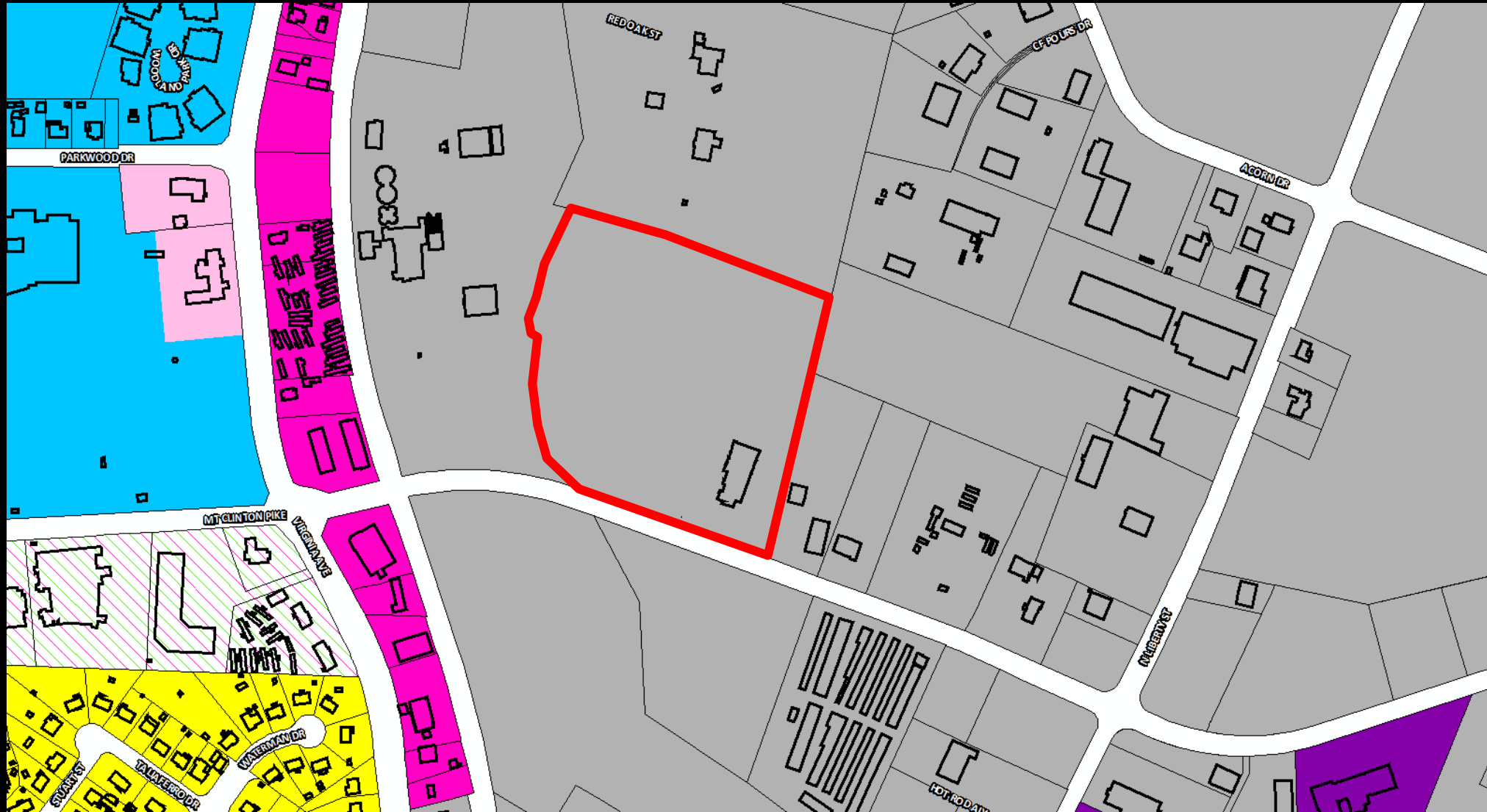


Preliminary Plat with Variances from the Subdivision Ordinance - 450 Mount Clinton Pike (Fire Station #5)

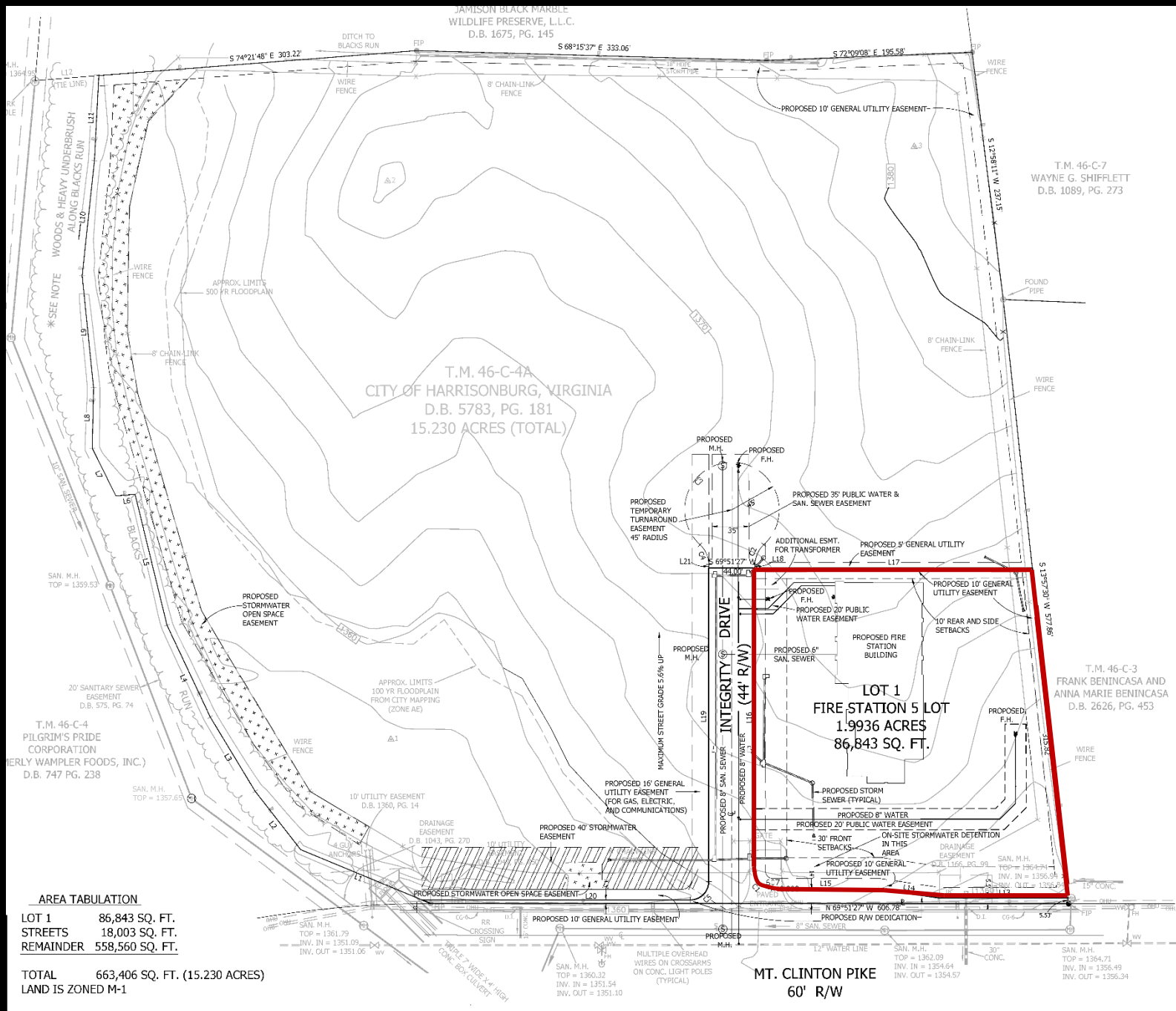


Preliminary Plat with Variances from the Subdivision Ordinance - 450 Mount Clinton Pike (Fire Station #5)



Preliminary Plat with Variances from the Subdivision Ordinance - 450 Mount Clinton Pike (Fire Station #5)

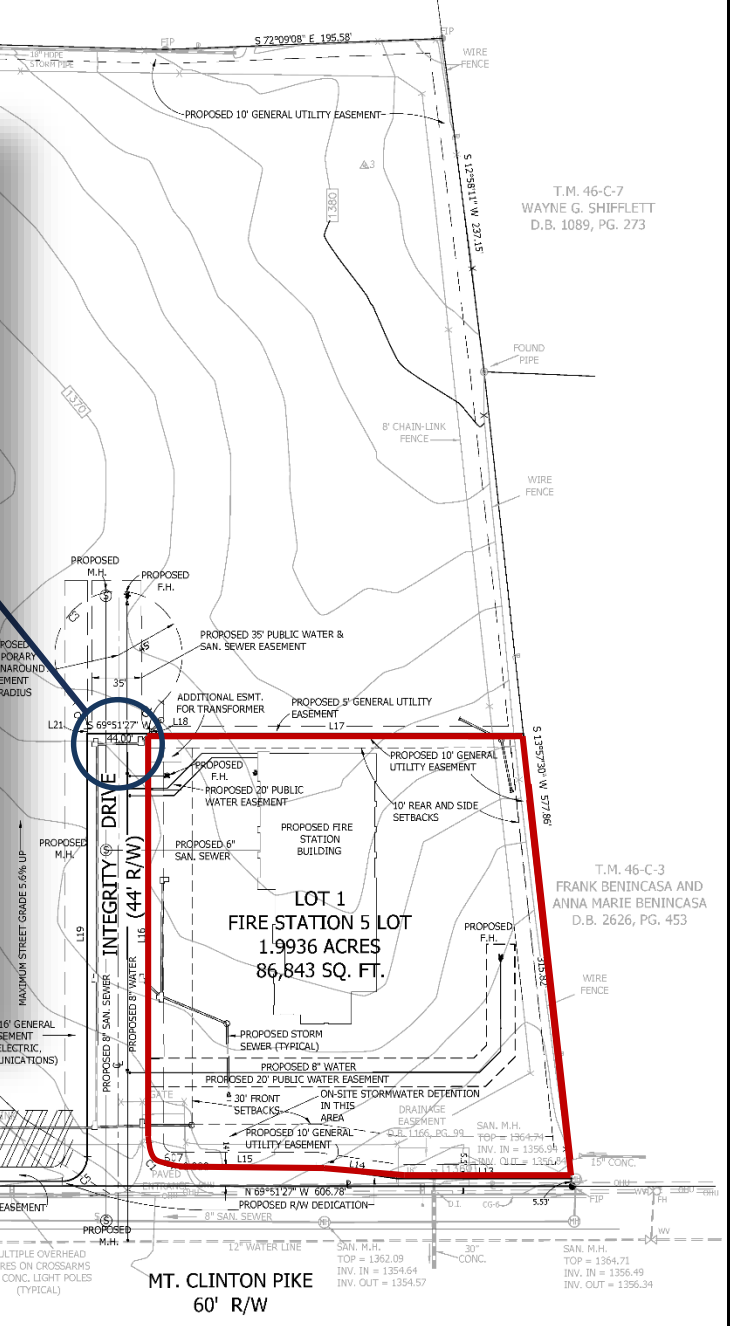
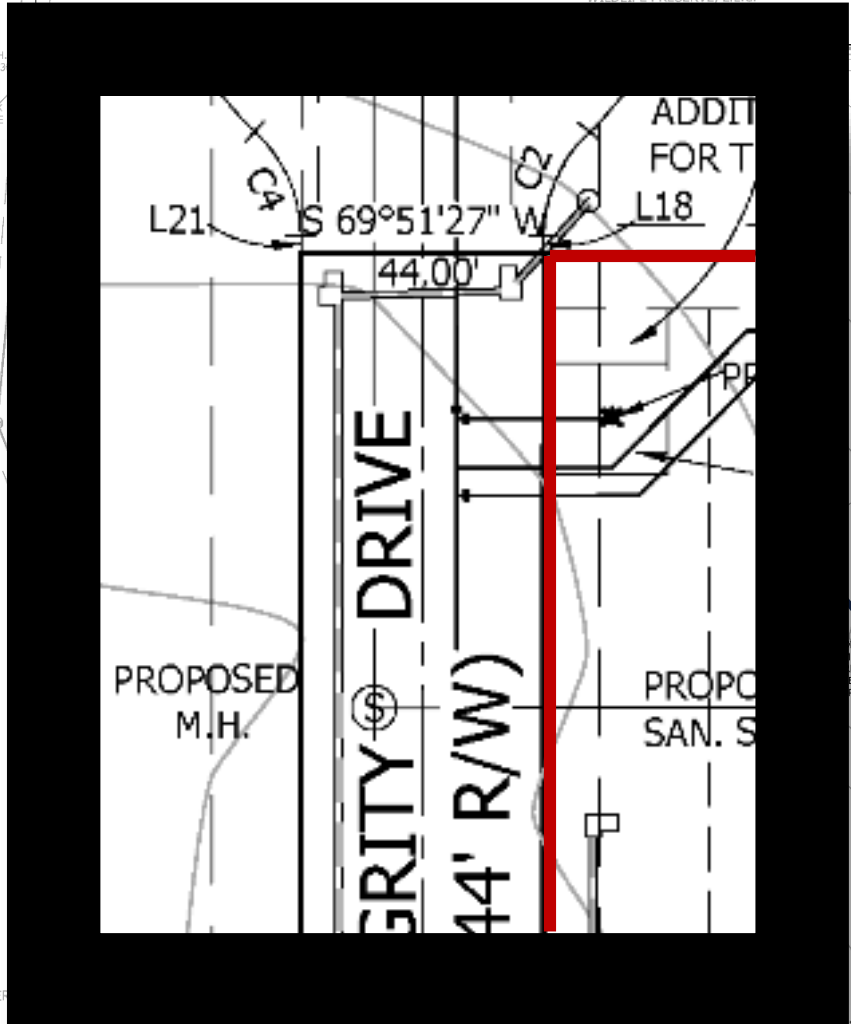




- █ Proposed new lot
- █ Proposed right-of-way dedication

To preliminarily subdivide to create

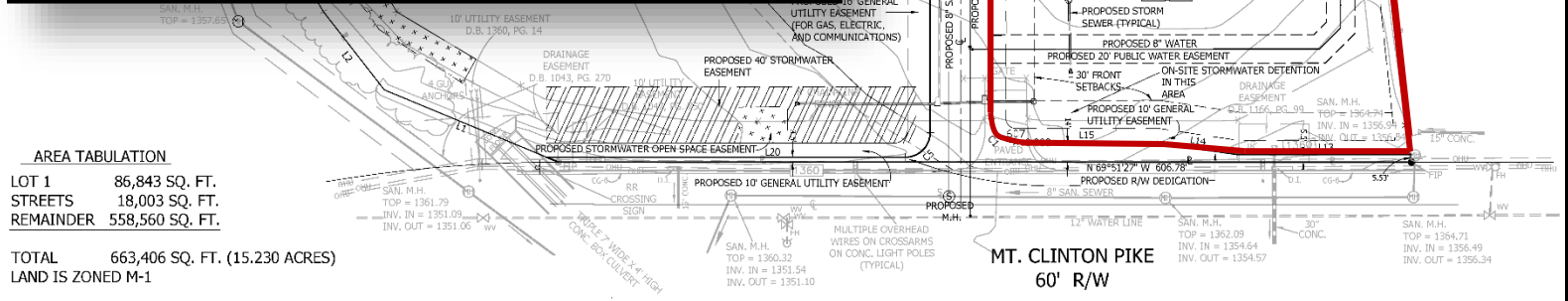
- Two lots
- Dedicate public street right-of-way



- █ Proposed new lot
- █ Proposed right-of-way dedication

Subdivision Ordinance variances:

- To deviate street design standards



AREA TABULATION

| | |
|-----------|-----------------|
| LOT 1 | 86,843 SQ. FT. |
| STREETS | 18,003 SQ. FT. |
| REMAINDER | 558,560 SQ. FT. |

TOTAL 663,406 SQ. FT. (15.230 ACRES)
LAND IS ZONED M-1

MT. CLINTON PIKE
60' R/W

Recommendation

Staff and Planning Commission (6-0) recommends approval of the preliminary plat with the variances as requested.