

# Special Use Permit

## 40 West Washington Street





PERSON ST





6TH ST

SOPHIE LN

CHLOE LN

KATES LN

5TH ST

JACKSON ST

COLLICELLO ST

EDOMRD

N LIBERTY ST

DRAKE LN

MONROE ST

SUTER ST

ASHBY AVE

VIRGINIA AVE

4TH ST

JEFFERSON ST

MASSANUTTEN ST

MADISON ST

W WASHINGTON ST

MONROE ST

3RD ST

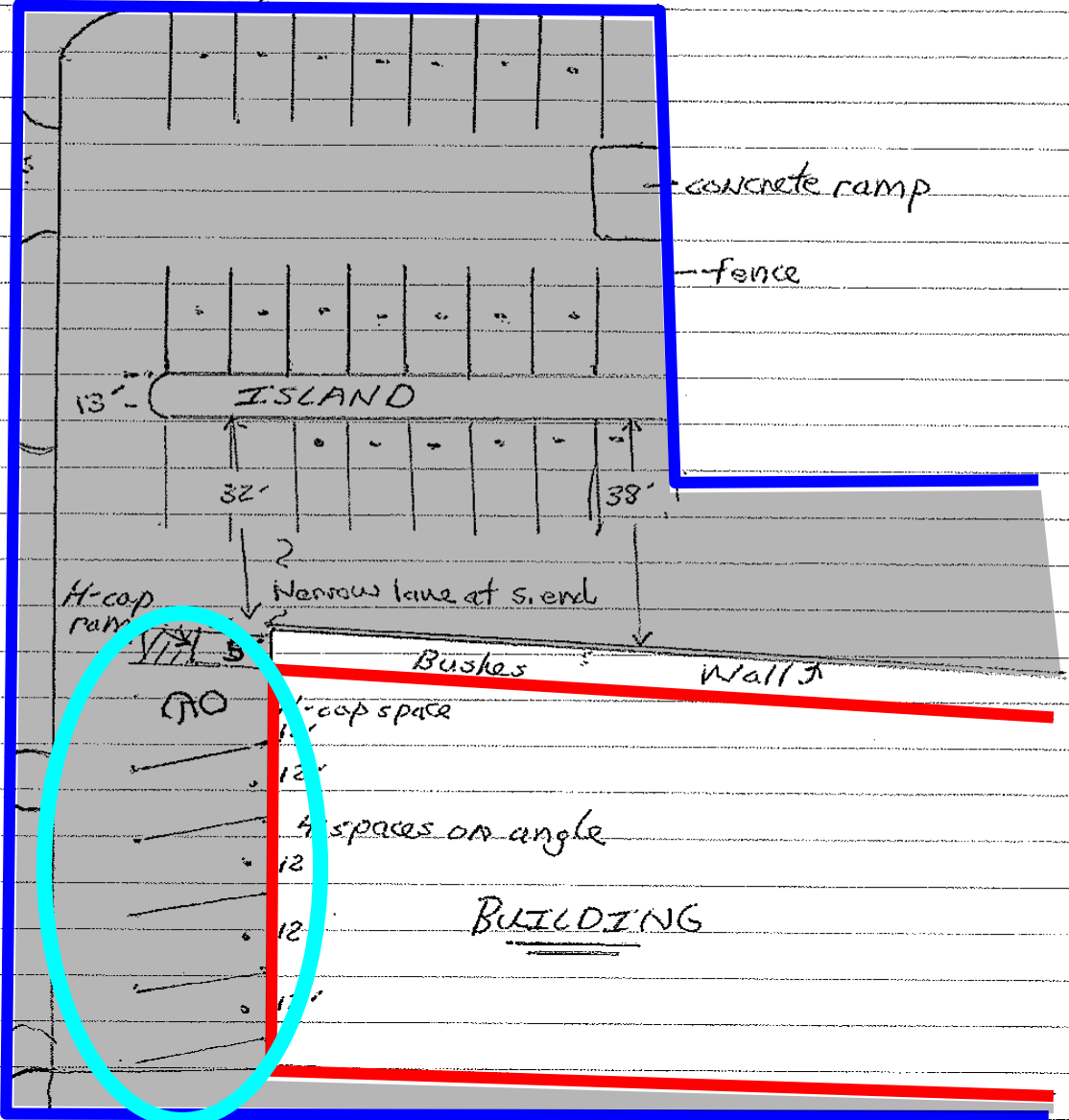
N MAIN ST



Priority Realty - Roy Brooks 6/24/16  
 roybrooks@choosepriority.com  
 Massanutten St.

This line slightly askew from bldg.  
 as is island as well

WASHINGTON ST.



13' ISLAND

concrete ramp

fence

32'

38'

H-cap ramp

Narrow lane at s. end

Bushes

Wall

NO

H-cap space

4 spaces on angle

BUILDING

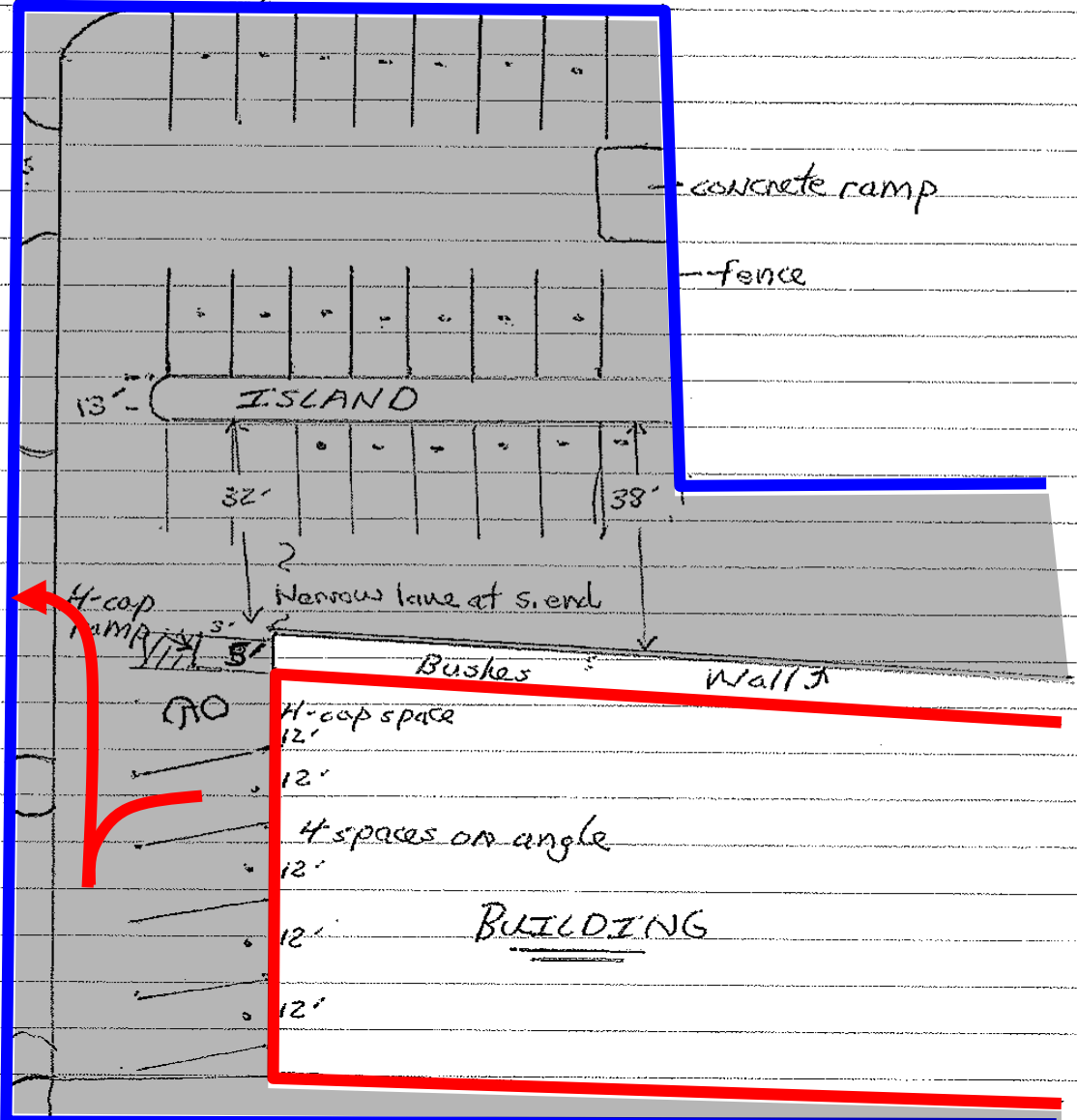


JUL/11/2016

Priority Realty - Roy Brooks 6/24/16  
 roybrooks@choosepriority.com  
 Massanutten St.

This line slightly askew from bldg.  
 as is Island as well

WASHINGTON ST.





## **Recommended Condition:**

**The parking area in front of the existing building shall be striped as angled parking facing west.**

**Staff supported the SUP with the condition as noted above and PC recommended approving the request 6-0.**