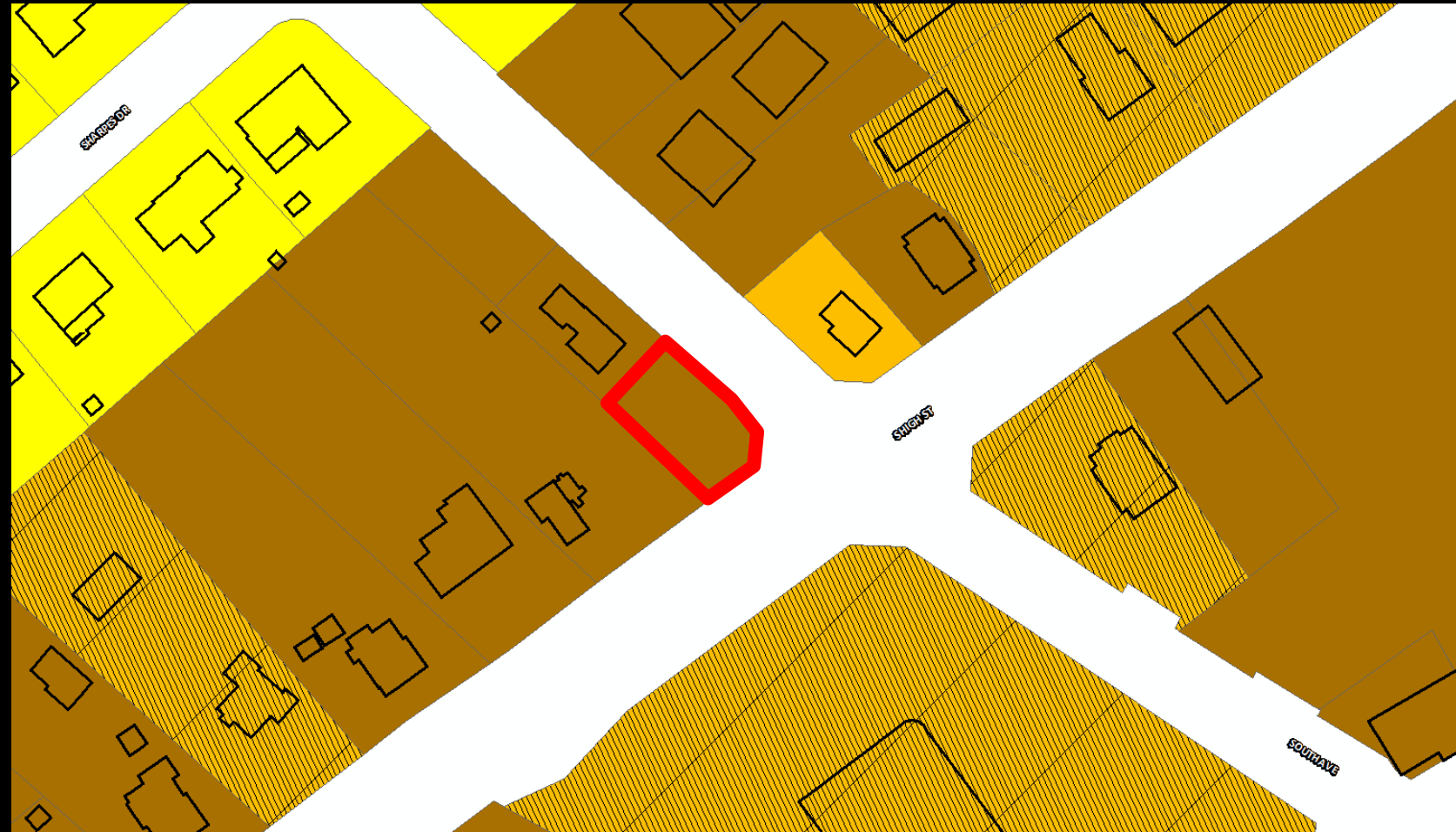
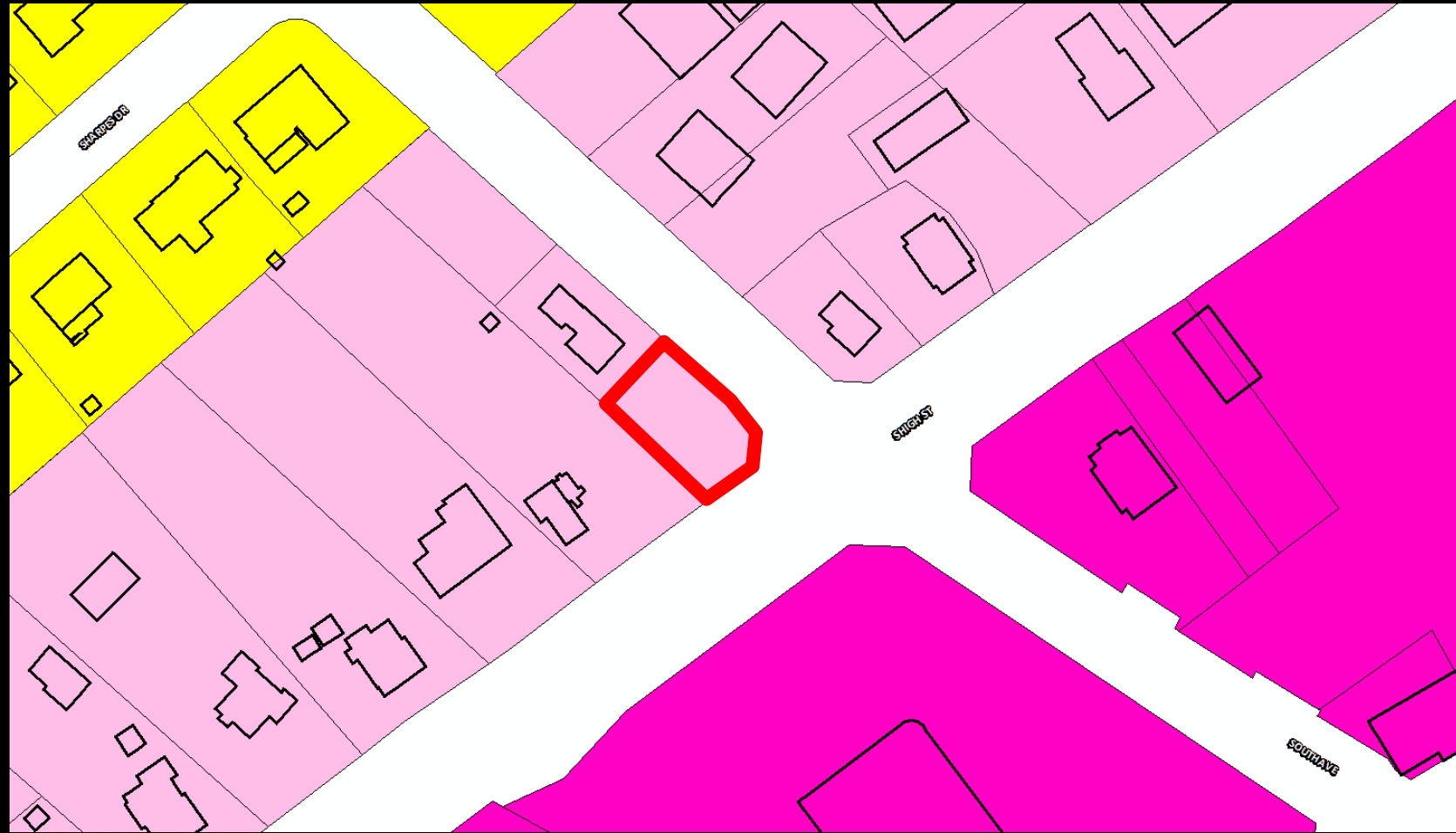


Special Use Permit – 201 South Avenue (To allow restaurants in M-1)



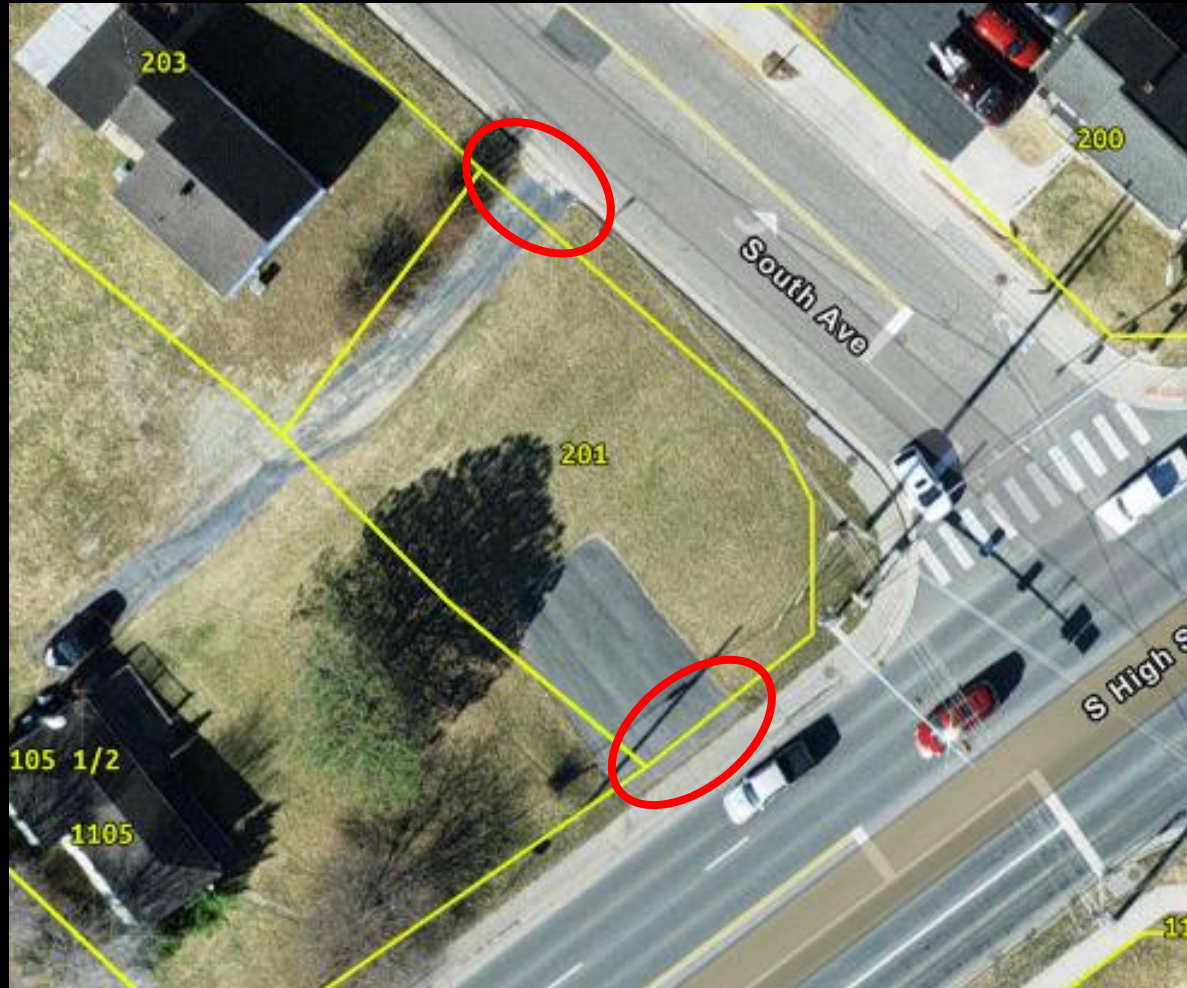
Special Use Permit – 201 South Avenue (To allow restaurants in M-1)



Special Use Permit – 201 South Avenue (To allow restaurants in M-1)



Entrances



There are two existing entrances on the site.

Entrance (on South Avenue)

The DCSM requires a minimum of 30 feet in width for a commercial entrance.



Entrance on South High Street)



Recommendation

Staff and Planning Commission recommends approval (7-0) of the SUP with the following conditions:

1. The SUP is limited to 1 mobile food truck/trailer.
2. Within 60 days of approval of the SUP, permanently close South High Street and rebuild the curb and gutter.
3. Within 60 days of approval of the SUP, the entrance along South Avenue must be re-built to meet commercial entrance standards width of a minimum of 30 feet.
4. Within 60 days of approval of the SUP, complete the appropriate permits and work for 201 South Avenue to have its own electrical service and meter.
5. If the conditions are not met within 60 days of approval, then operations must cease until the conditions are met. However, upon request from the applicant and if the applicant has demonstrated diligent pursuit to complete the above conditions, the Zoning Administrator may grant one 60-day extension allowing the applicant a maximum of 120 days from SUP approval to complete the conditions.