

# THE NAVIGATION CENTER



# Nice to meet you 🤝

Founded in 2007

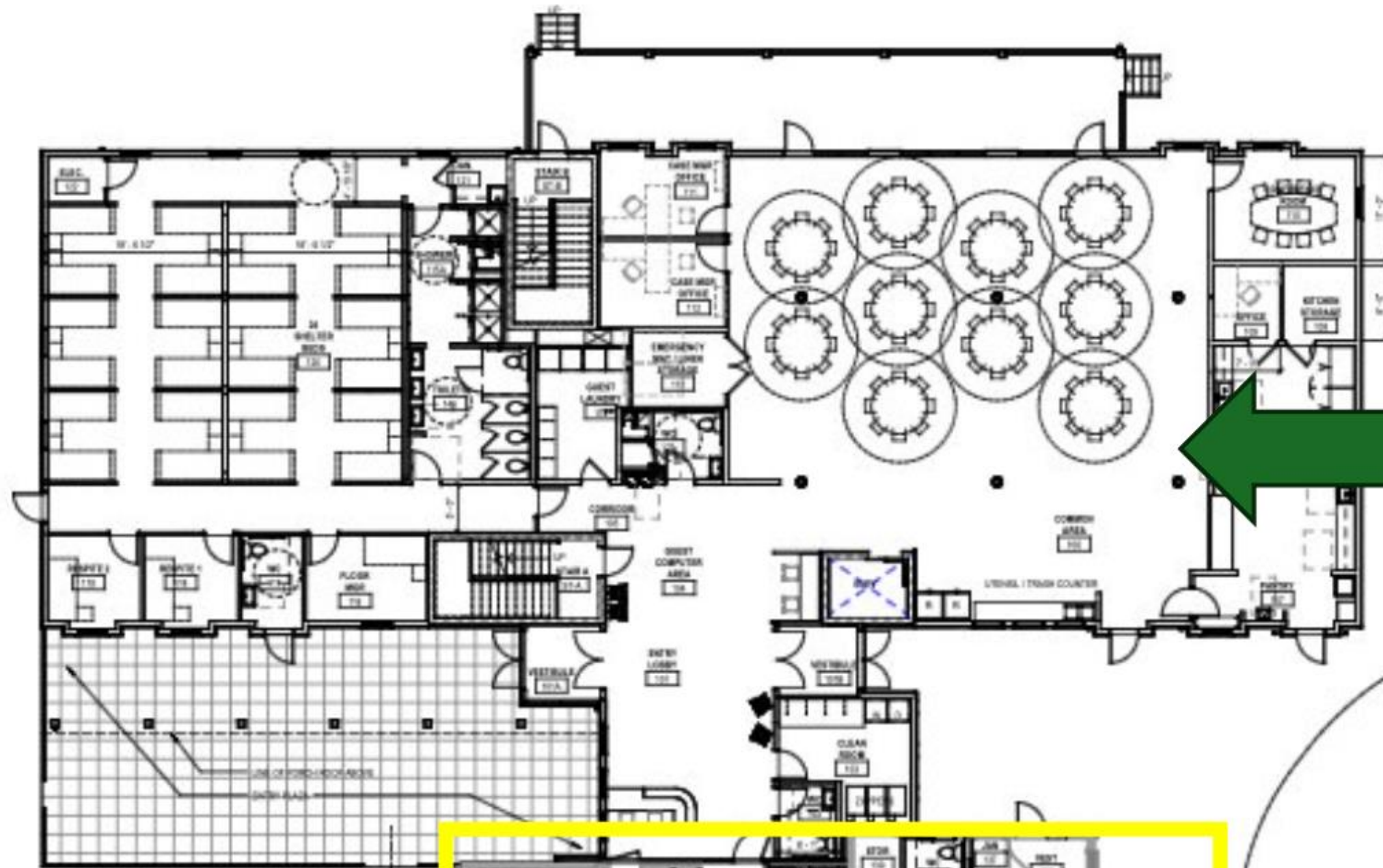
Safe Shelter for the Unhoused  
Compassionate Support and Access to Services for ALL

Community-driven, Community-funded

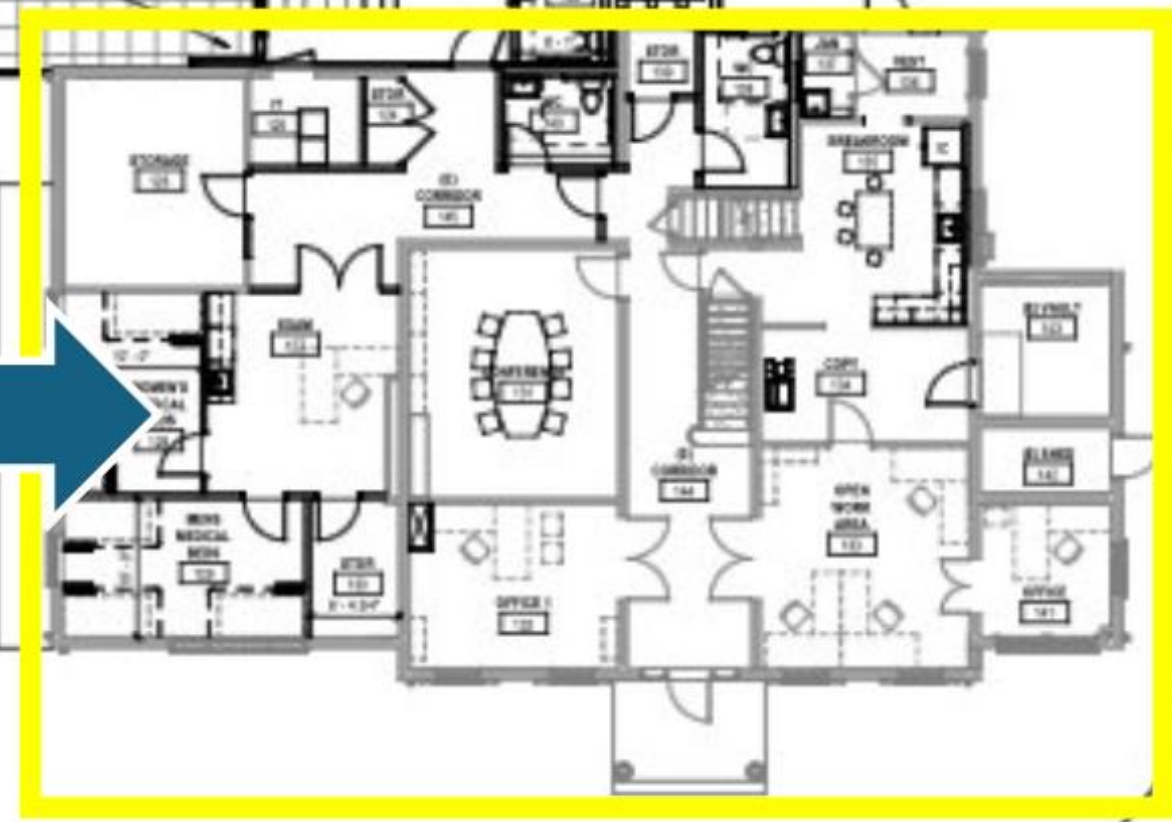
[valleyopendoors.org](http://valleyopendoors.org)



L  
E  
V  
E  
L  
1



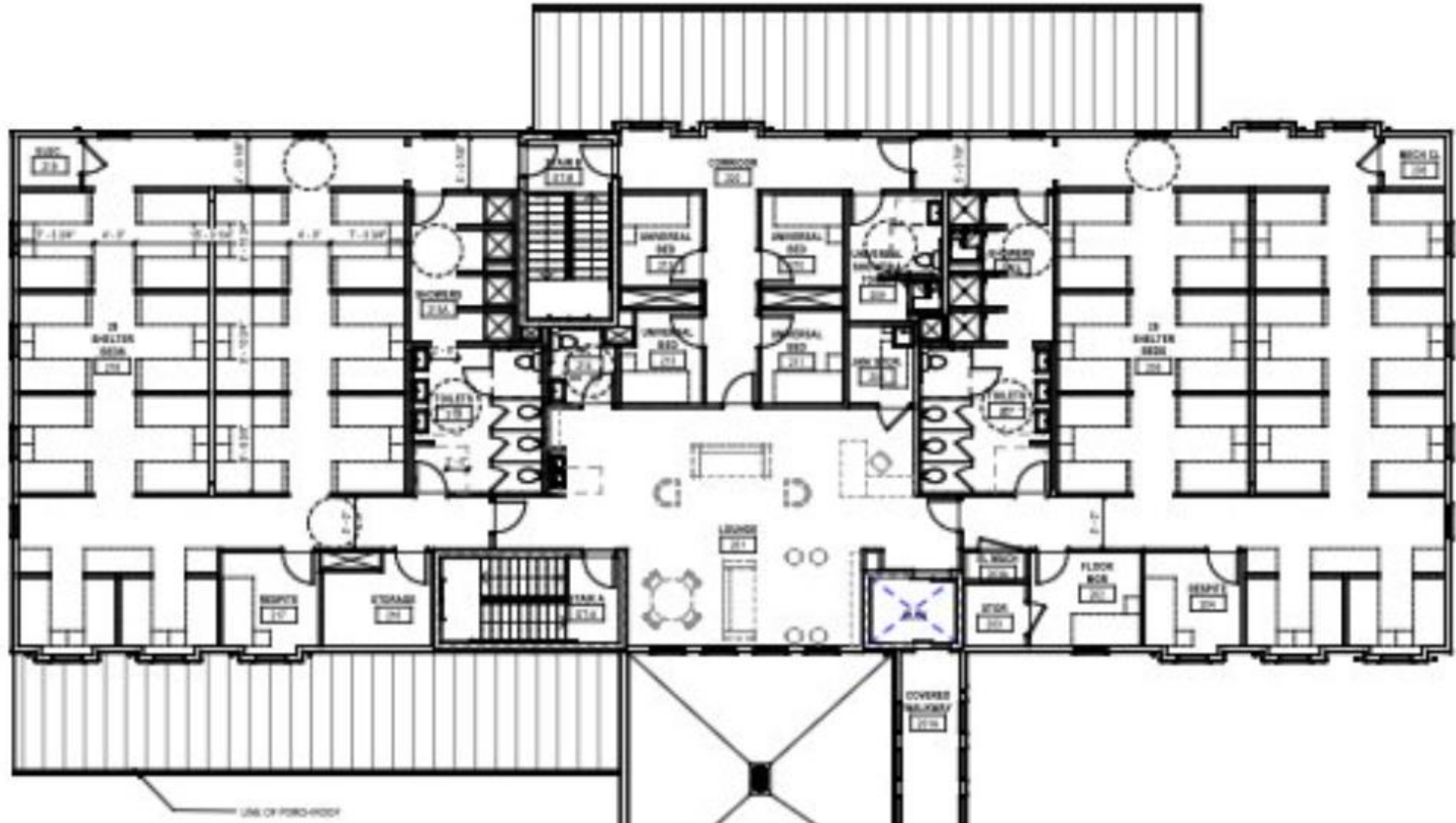
**Shelter &  
Drop-in Center**



**Clinic &  
Administration**



L  
E  
V  
E  
L  
  
2



# Daytime Drop-in Center

## Schedule:

Monday thru Friday

8 a.m. - 5 p.m. (closed major holidays)

Open to ALL in the community.

Resource Navigation and Access

“First Point of Entry”

Select Services Onsite

Public Facilities (charging stations; laundry; showers)



# Low-barrier Shelter

## Schedule:

Open daily

6 p.m. - 7 a.m. (year-round)

\*Low-barrier = everyone deserves shelter

18 years or older

Experiencing homelessness

Holistic approach with voluntary wrap around services



# Our Partners: Housing

**Mercy House**

**First Step: A Response to Domestic Violence**

**Harrisonburg - Rockingham Community**

**Services Board Permanent Supportive Housing**



# Our Partners: Health

**Sentara Health**

**Strength In Peers**

**The Suitcase Clinic**

**Harrisonburg Community Paramedics**

# Our Partners: Misc.

**SHINE (education)**

**Blue Ridge Area Food Bank (food)**

**United Way of Harrisonburg and Rockingham (ALICE assistance)**

**Western Virginia Continuum of Care (coordination)**

# Our Commitment

**Remain community-driven**

**Proactive listening**

**Remain a service for all (i.e., low-barrier)**

**Operate safely and inclusively**

**Help improve our community with our community**

**Collaborate for long-term solutions**

# We Need You



**Our success = your success**

**We are primarily funded by individuals**

**You can support us through:**

**Donations (in-kind and monetary)**

**Volunteerism**

**Advocacy for long-term solutions**

# Q&A



Thank you for having us.

Find us on     @valleyopendoors

Visit us at [valleyopendoors.org](https://valleyopendoors.org)

Text **SUPPORTALL** to **53-555** to support Open Doors