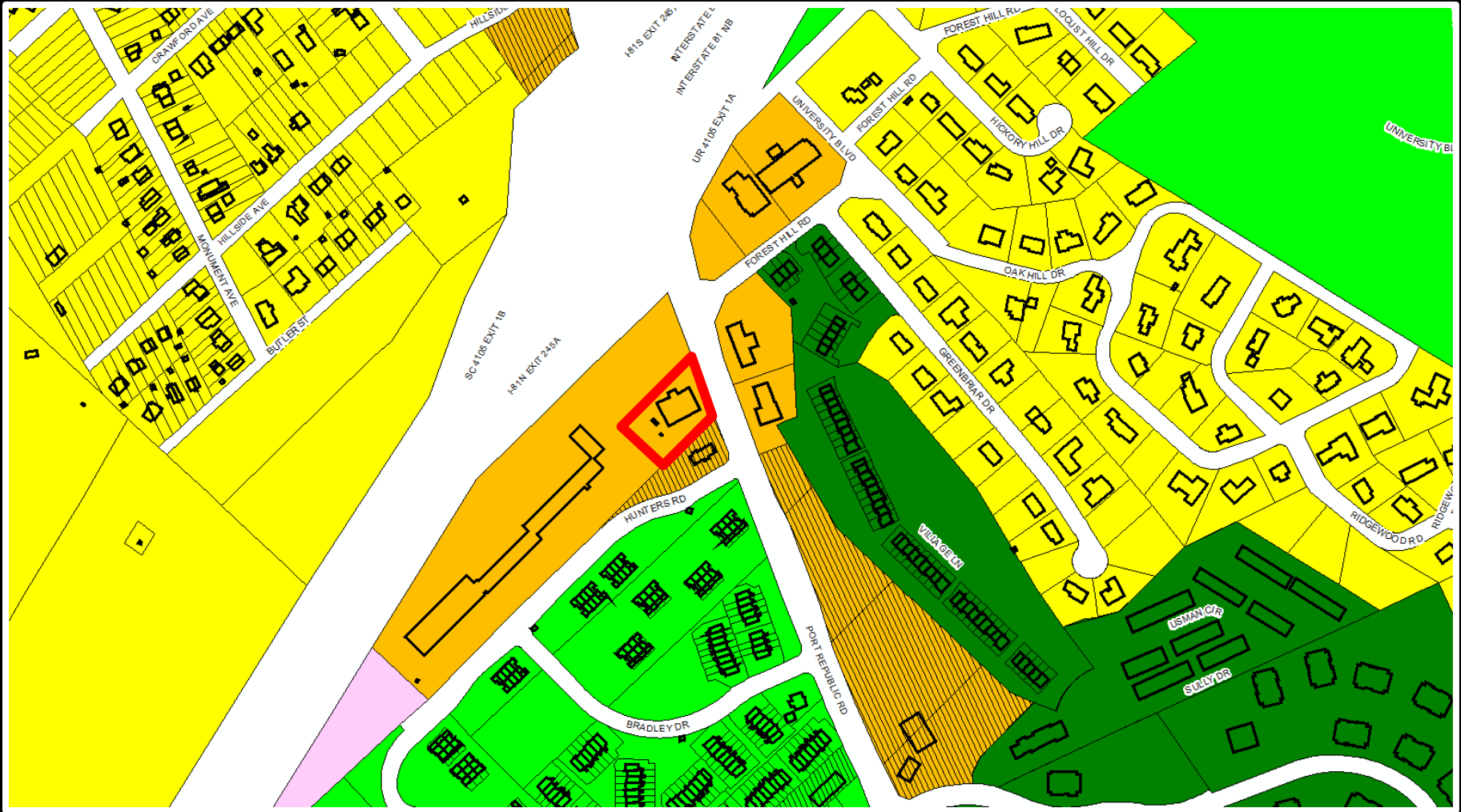


SUP – 10-3-91(2) Warehousing in B-2 701 Port Republic Road







EXXON





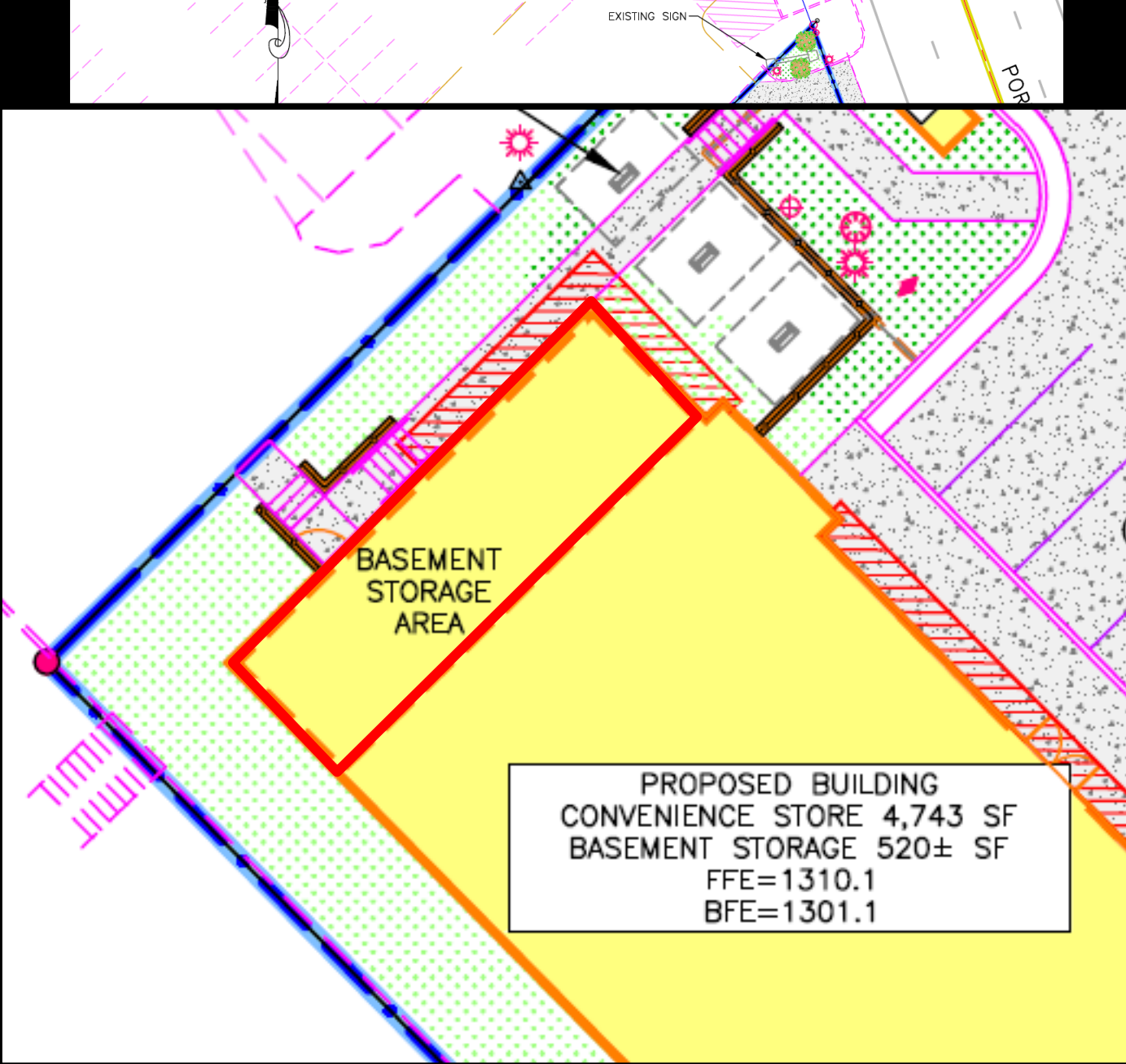




715

SPEED
LIMIT
35







Section 10-3-25, Off-Street Vehicle Parking Regulations

- (17) **Retail stores, sales rooms and similar mercantile establishments**: If ten thousand (10,000) square feet or less

PROPOSED USE AND PARKING REQUIREMENTS						
PROPOSED BUILDING	USE	SIZE (SF)	RATE	EMPLOYEES	COMPANY VEHICLES	SPACES REQUIRED
1	CONVENIENCE STORE	4,743	1/200	—	—	24
1	BASEMENT STORAGE	520	1/0	—	—	0
SECTION 10-3-25 (17) Retail				TOTAL SPACES REQUIRED		24
SECTION 10-3-25 (18) Warehousing and Storage				HANDICAP REQUIRED		1
				TOTAL SPACES PROVIDED		24
				HANDICAP PROVIDED		2
BICYCLE PARKING DCSM 2.6.10				RACK SPACES REQUIRED		4
				RACK SPACES PROVIDED		4

each two (2) persons working on the premises on a maximum shift, plus parking space for every truck or other vehicle used in connection therewith.

Recommendation

Staff and Planning Commission (4-0) recommended to approved the SUP with the following condition:

- Storage and warehousing operations for a tenant not operating on site shall only occur within the existing structure's basement and shall be limited to 520 square feet or less.**