

Railroad Crossing Elimination (RCE) Program

September 10, 2024



Railroad Crossing Elimination Program

- Administered by the Department of Transportation's Federal Railroad Administration
- Can fund capital and planning projects
- 20% match required
- Applications due September 23, 2024

Eligible Uses

1. Grade separation or closure
2. Track relocation
3. Improvement or installation of measures that improve safety for separation or relocation projects
4. Other safety improvement projects at highway-rail grade crossings
5. A group of related projects described in 1 - 4 that would collectively improve the mobility of people or goods
6. The planning, environmental review, and design of an eligible project described in 1 - 5

Application Tracks and Project Stages

Track 1: Project Planning

Track 2: Project Development

Track 3: Final Design/Construction

Applications must describe the project consistent with the FRA's Capital Projects Guidance, which details the project Lifecycle Stages:

1. Systems Planning
2. Project Planning
3. Project Development
4. Final Design
5. Construction
6. Operation

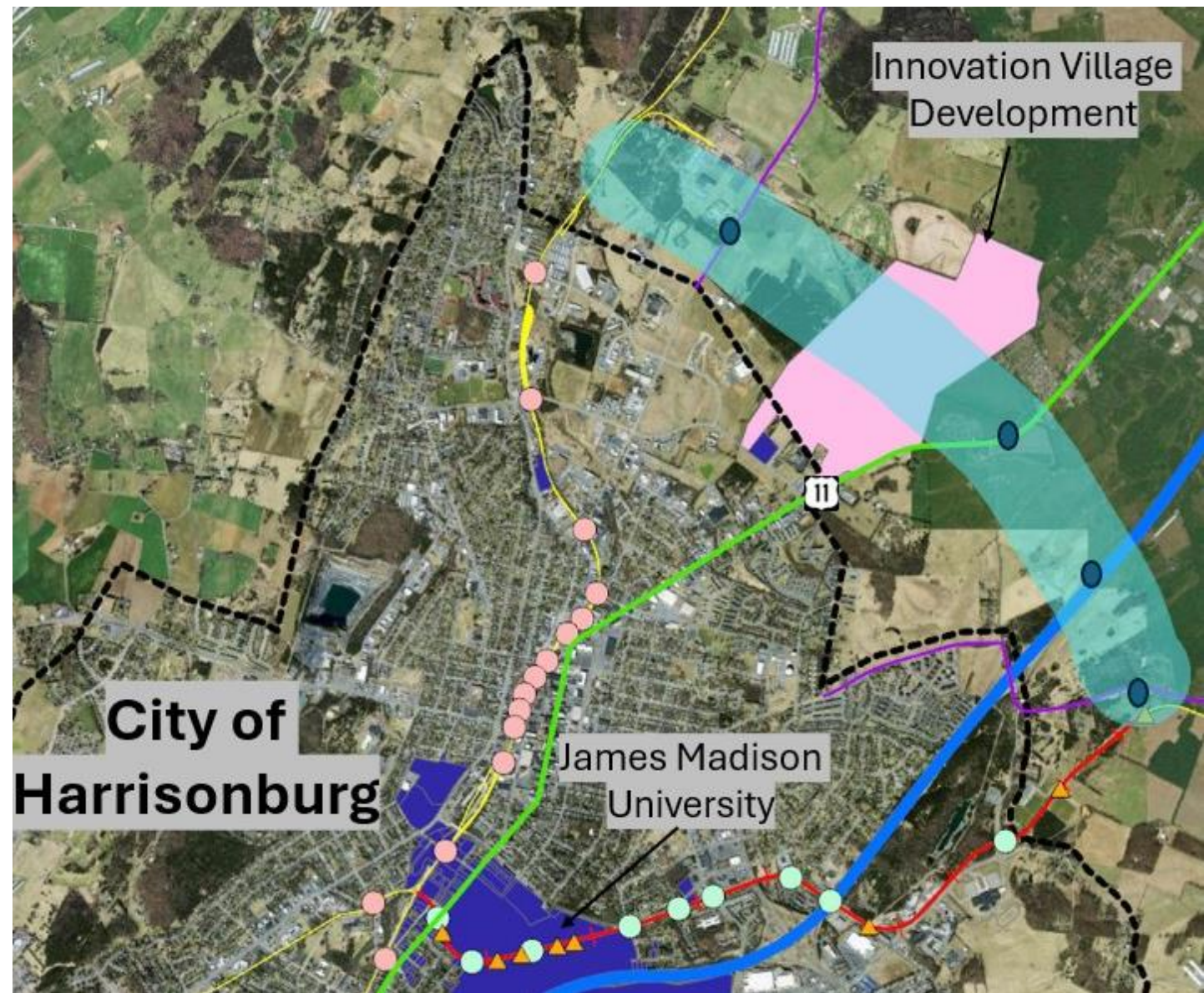
We can request funding for multiple lifecycle stages, but we must identify project components and costs for each Lifecycle Stage.

History of Harrisonburg Crossing Elimination

- In 2005/2006, the City completed a feasibility study
- The study confirmed the feasibility of crossing elimination in Harrisonburg
- Estimated project cost ranging from \$71 million to \$92 million
 - Cost varied based on final routing
 - Cost was escalated to 2015 dollars

Study Area

- Relocation of existing NS Rail to area NE of City
- Open Rail opportunities to northern City/County Commercial Sites
- Eliminate 9 At-Grade Crossings and 7 Pathway Crossings within City and JMU
- Redevelop abandoned railbed as Shared Use Path



Proposed Application

- Public Works is pursuing a Project Planning Grant Opportunity
- \$300,000 project cost
- Partner with Rockingham County and James Madison University
 - \$20,000 in matching funds contributed by each partner
- Other potential stakeholders:
 - Department of Rail and Public Transit (DRPT)
 - Harrisonburg Rockingham Metropolitan Planning Organization (HRMPO)
 - Norfolk Southern Railroad