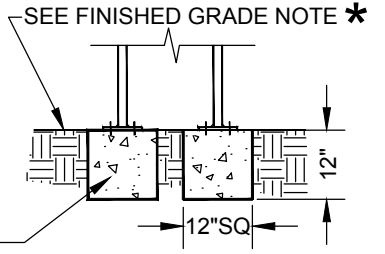
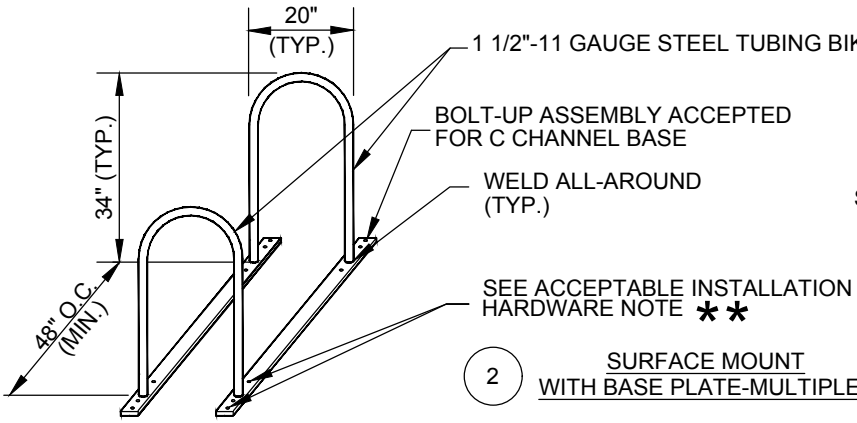


1 1/2"-11 GAUGE STEEL TUBING
BIKE RACK @ 48" O.C. (TYP.)
WELD ALL-AROUND
SEE ACCEPTABLE INSTALLATION HARDWARE NOTE **
SEE FINISHED GRADE NOTE *



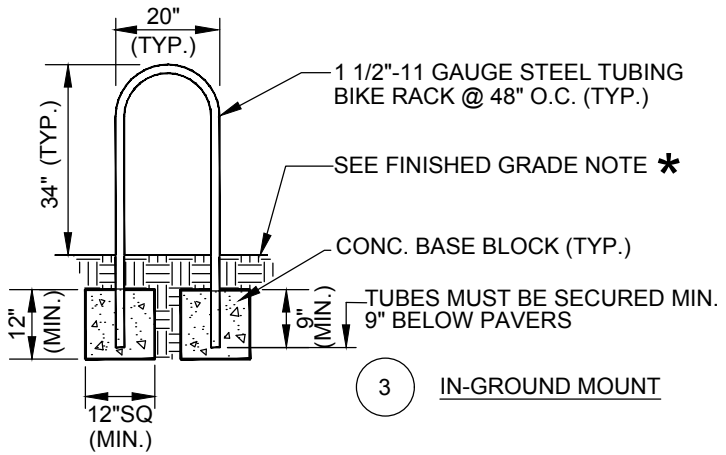
1 SURFACE MOUNT WITH BASE PLATE-INDIVIDUAL RACK

DETAIL 1-B



SEE FINISHED GRADE NOTE *

2 SURFACE MOUNT WITH BASE PLATE-MULTIPLE RACK



3 IN-GROUND MOUNT

* FINISHED GRADE FOR ALL DETAILS SHALL BE:
A. INTERLOCKING CONC. OR BRICK PAVERS, OR
B. 4" CONC. SIDEWALK, OR
C. UNPAVED GRADE/GRASS STRIP

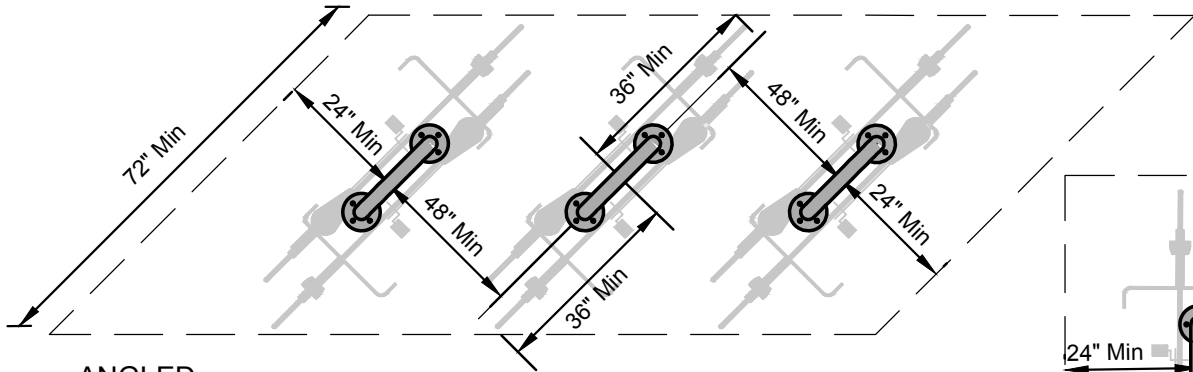
** ACCEPTABLE INSTALLATION HARDWARE:
A. CONCRETE WEDGE ANCHOR BOLT OR TAMPER-PROOF STUD ANCHOR (RAWL OR APPROVED EQUAL)
B. ASPHALT PAVEMENT: LANDSCAPE NAILS (6" - 12" LONG SPIKES, TYPICALLY 1/4" TO 3/8" IN MIN. OF 2 STUDS PER MOUNTING PLATE)

NOTES:

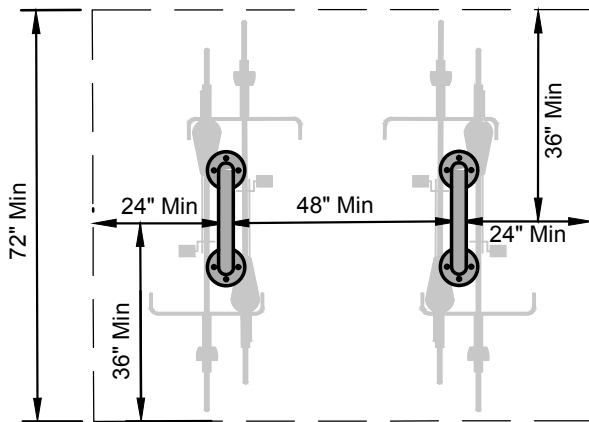
- ALL RACKS & BASE PLATES SHALL BE HOT-DIP GALVANIZED, THERMOPLASTIC, OR STAINLESS STEEL FINISH.
- BICYCLE RACK DESIGN AND LAYOUT SHALL BE AS RECOMMENDED BY THE "BICYCLE PARKING GUIDELINES" AS ADOPTED BY THE ASSOCIATION OF PEDESTRIAN AND BICYCLE PROFESSIONALS (WWW.APBP.ORG). OTHER RACK STYLES MEETING THESE GUIDELINES ARE ACCEPTABLE.

REVISIONS				DWG. NO. 2.6.10
NO.	DATE	DESCRIPTION	INIT.	
				PAGE 1 OF 2

**BICYCLE PARKING
DETAIL (TYP.)**



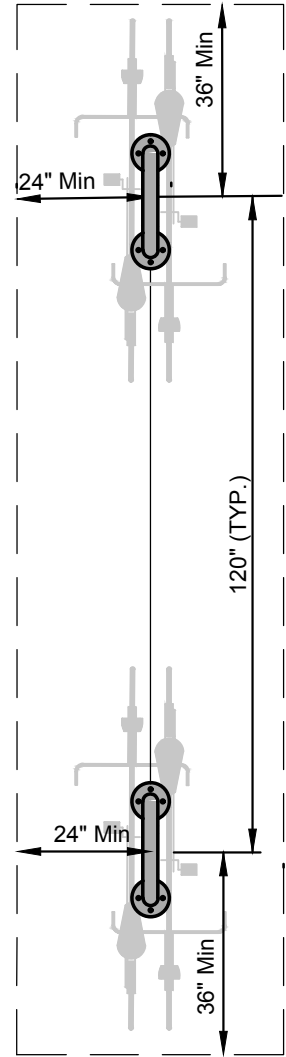
ANGLED



SIDE-BY-SIDE

NOTES:

1. ALL MEASUREMENTS ARE ON CENTER
2. ADEQUATE AREA TO MANEUVER BICYCLES TO ACCESS BICYCLE PARKING SPACES REQUIRED
3. BICYCLE PARKING SHALL NOT ENCROACH UPON ACCESSIBLE PATHS
4. BICYCLE PARKING SPACES SHALL BE A MINIMUM 12" FROM VEHICULAR PARKING, VEHICULAR TRAVELWAYS, AND VERTICAL SURFACES



END-TO-END

REVISIONS

NO.	DATE	DESCRIPTION	INIT.

**BICYCLE PARKING
DETAIL (TYP.)**

DWG. NO.

2.6.10

PAGE

2 OF 2