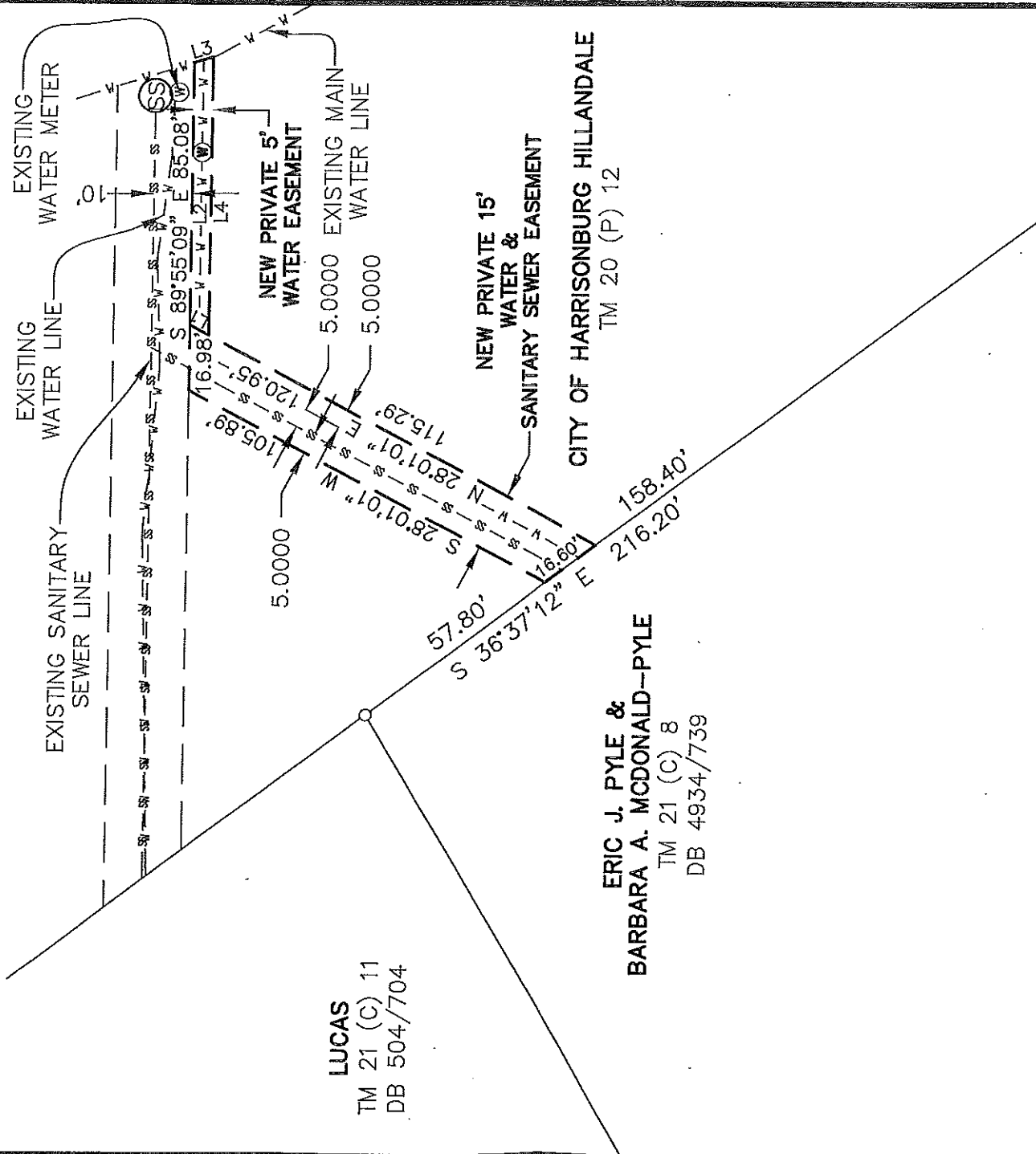


JANUARY 22, 2019
SCALE: 1"=40'

- = FOUND IRON PIN
- ⊙ = PROPOSED WATER METER
- ⊙⊙ = EXISTING SANITARY SEWER MANHOLE
- - - - - = WATER LINE
- - - - - = SANITARY SEWER LINE

RECORD NORTH

LINE	BEARING	DISTANCE
L1	N 28°01'01" E	5.66'
L2	N 89°55'09" W	68.1'
L3	N 17°20'07" W	5.24'
L4	S 89°55'09" E	72.32'



LUCAS
TM 21 (C) 11
DB 504/704

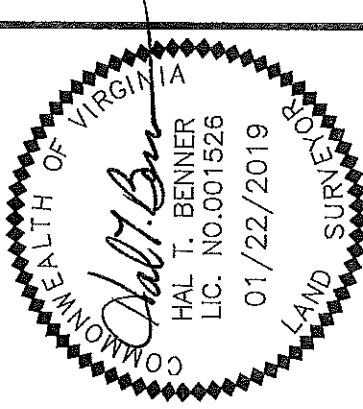
ERIC J. PYLE &
BARBARA A. McDONALD-PYLE
TM 21 (C) 8
DB 4934/739

CITY OF HARRISONBURG HILLDALE
TM 20 (P) 12

PRIVATE WATER & SEWER EASEMENT ON TAX MAP PARCEL 20 (P) 12 CITY OF HARRISONBURG HILLDALE

CITY OF HARRISONBURG, VIRGINIA

BENNER & ASSOC., INC.
8 PLEASANT HILL ROAD
HARRISONBURG, VA 22801
540 434-0267
REF# 092618
DRAWING: 092618.dwg
CRD: 092618



Proposed Water and Sewer Connections for
 "1199" South Dogwood St.
 (Map ID 021 C 8)
 Detail Map

Notes

1. Maintain 10' minimum distance between existing sanitary sewer main and new water service line.
2. New Type A domestic water service meter installed by Public Utilities upon payment of City Code Applicable Fees.
3. Public Utilities will connect to existing 4" sanitary sewer (21L70) and construct 10' of the proposed 4" lateral @ 2.0% slope and will install a clean-out upon payment of City Code Applicable Fees.
4. A 10' wide Private Sanitary Sewer and Water Service Easement will be recorded under separate documents



100 feet

- gas line
- sewer line
- - - - - water line
- HEC line

