



# Public Alley Closing – Between 245 & 285 East Washington Street







EVERETT COMMUNITY CENTER  
1000 Everett Ave  
Everett, WA 98149  
206.465.7100  
www.everettcc.org





East: Vacant Parcel



West: Industrial Operations



South: Single-family dwellings

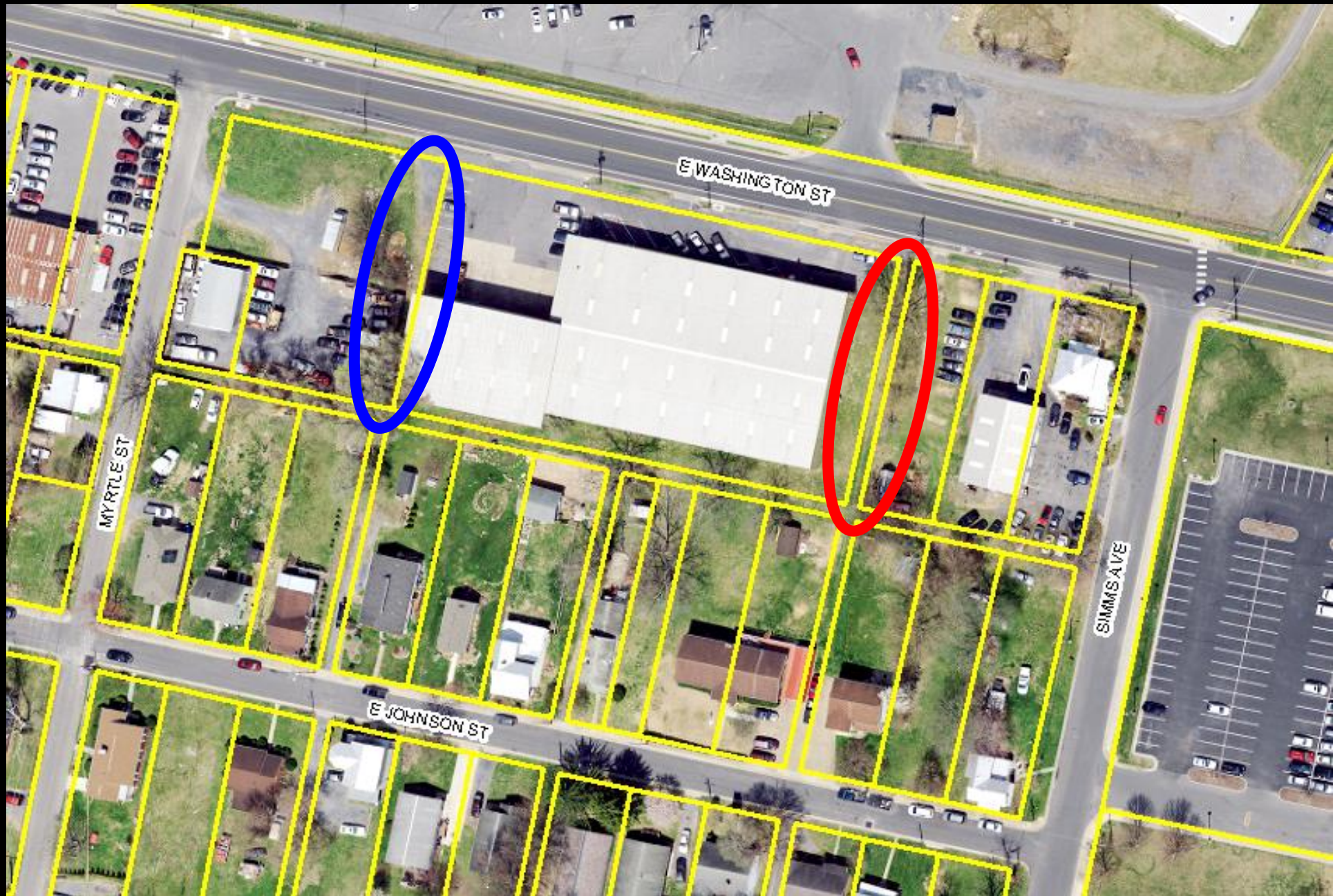


North: Industrial Operations









# Recommendation

**Staff and Planning Commission (6-0)  
recommend approval of the public alley  
closing.**

