

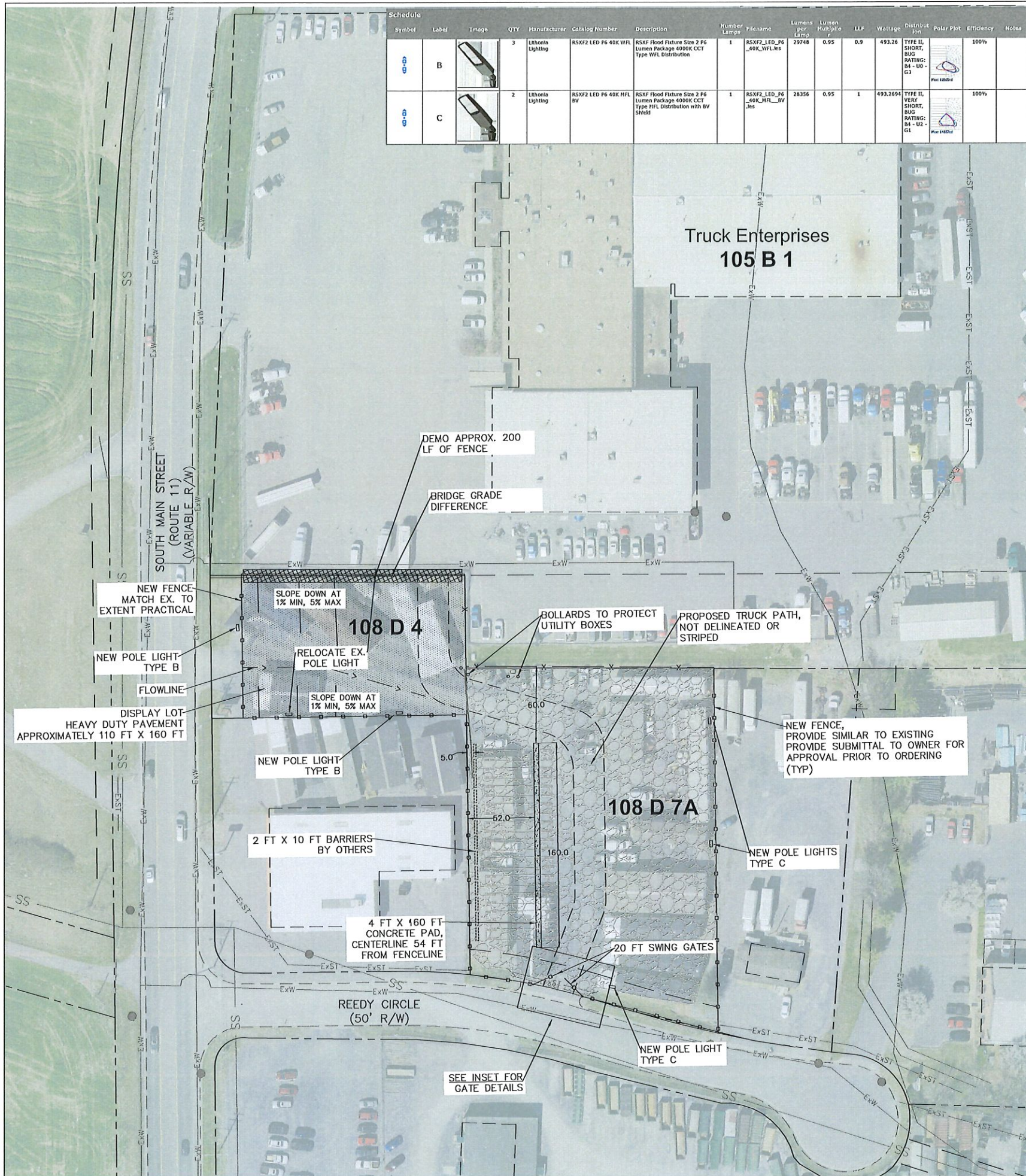
TRUCK ENTERPRISES
PARKING EXPANSION
3440 S. MAIN ST.
HARRISONBURG, VIRGINIA 22802

No.	Description	Date

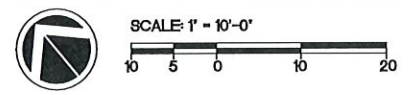
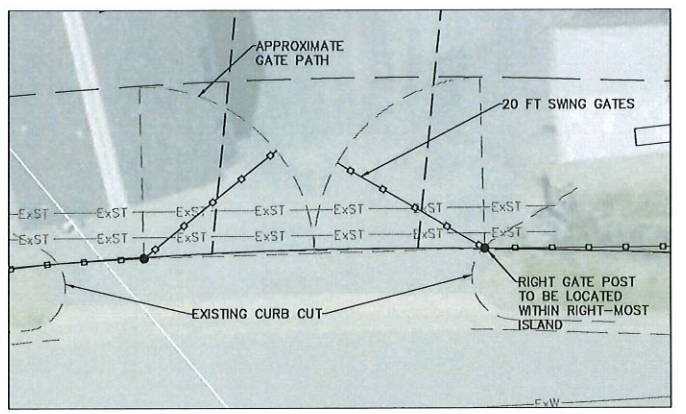
BID SET

SITE PLAN

Project number	20052C
Date	November 3, 2020
Drawn by	RES
Checked by	SOR
C4.01	
Scale	1" = 40'



Symbol	Label	Image	QTY	Manufacturer	Catalog Number	Description	Number Lamps	Filename	Lumens per Lamp	Lumen Multiple	LLF	Wattage	Distribution	Pole Plot	Efficiency	Notes
B	B		3	Lithonia Lighting	RSXF2 LED P6 40K WFL	RSXF2 Flood Fixture Size 2 P6 Lumen Package 4000K CCT Type WFL Distribution	1	RSXF2_LED_P6_40K_WFL.ms	29748	0.95	0.9	493.26	TYPE II, SHORT, BUG RATING: 84 - U0 - G1		100%	
C	C		2	Lithonia Lighting	RSXF2 LED P6 40K HFL BV	RSXF2 Flood Fixture Size 2 P6 Lumen Package 4000K CCT Type HFL Distribution with BV Shield	1	RSXF2_LED_P6_40K_HFL_BV.ms	28356	0.95	1	493.2694	TYPE II, VERY SHORT, BUG RATING: 84 - U0 - G1		100%	



- NOTES:
- 1) ALL NEW FENCING AND LIGHT POLES SHALL BE PLACED NO CLOSER THAN 51 LF TO THE ROADWAY CENTERLINE OF SOUTH MAIN ST
 - 2) SPECIFIED LIGHTING MAY BE SUBSTITUTED WITH EQUAL AS APPROVED BY THE OWNER AT TIME OF INSTALLATION.
 - 3) ALL POLE LIGHT BASES SHALL EXTEND A MIN OF 30 INCHES ABOVE GROUND LEVEL. MATCH EXISTING TO EXTENT PRACTICAL.

RSXF2 LED Floodlight

Specifications

EPA	0.9 ft (0.03 m)
Length	28.3" (71.9 cm)
Width	13.4" (34.0 cm)
Height	2.0" (5.1 cm) Main Body, 2.8" (7.1 cm) Arm
Weight	27 lbs (12.7 kg)

Introduction

The new RSXF2 Flood family delivers maximum value by providing significant energy savings, long life and outstanding photometric performance at an affordable price. The RSXF2 delivers 11,000 to 31,000 lumens allowing it to replace 250W to 1000W HPS floodlights.

The RSXF2 features an adjustable integral arm that allows the luminaire to be mounted on a 2-3/8" OD stem. Integral cover/wire box serves as an approved splice compartment allowing for fast, easy mounting and wiring without opening the electrical compartment. A yoke and other mounting configurations are available.

Ordering Information	EXAMPLE: RSXF2 LED P6 40K WFL MVOLT IS DOBXD
Color	4000K
Beam Spread	120°
Mounting	WFL
Wattage	493.26W
Material	Aluminum

Shipped Included	Shipped Excluded	Shipped
RSXF2 Floodlight	Wiring and conduit	WFL
Mounting hardware	Mounting hardware	WFL
Mounting hardware	Mounting hardware	WFL
Mounting hardware	Mounting hardware	WFL
Mounting hardware	Mounting hardware	WFL
Mounting hardware	Mounting hardware	WFL
Mounting hardware	Mounting hardware	WFL
Mounting hardware	Mounting hardware	WFL
Mounting hardware	Mounting hardware	WFL
Mounting hardware	Mounting hardware	WFL

