

GENERAL CONSTRUCTION NOTES:

1. THE CONTRACTOR SHALL VISIT THE JOB SITE PRIOR TO THE SUBMISSION OF BIDS OR PERFORMING WORK IN ORDER TO BECOME FAMILIARIZE WITH THE FIELD CONDITIONS AND TO VERIFY THAT THE PROJECT CAN BE CONSTRUCTED IN ACCORDANCE WITH THE CONTRACT DOCUMENTS.
2. CONTRACTOR SHALL CONTACT "MISS UTILITY" (1-800-552-7001) FOR IDENTIFICATION OF UNDERGROUND UTILITIES PRIOR TO START OF CONSTRUCTION.
3. CONTRACTOR IS RESPONSIBLE FOR COORDINATING ALL REQUIRED INSPECTIONS.
4. ALL DIMENSIONS TO, OF, AND ON EXISTING BUILDINGS, DRAINAGE STRUCTURES, AND SITE IMPROVEMENTS SHALL BE VERIFIED IN FIELD BY CONTRACTOR WITH ALL DISCREPANCIES REPORTED TO THE ENGINEER.
5. DO NOT CHANGE SIZE OR SPACING OF STRUCTURAL ELEMENTS.
6. DETAILS SHOWN ARE TYPICAL; SIMILAR DETAILS APPLY TO SIMILAR CONDITIONS UNLESS OTHERWISE NOTED.
7. THESE DRAWINGS DO NOT INCLUDE NECESSARY COMPONENTS FOR CONSTRUCTION SAFETY WHICH IS THE SOLE RESPONSIBILITY OF THE CONTRACTOR.
8. CONTRACTOR SHALL BRACE STRUCTURES UNTIL ALL STRUCTURAL ELEMENTS NEEDED FOR STABILITY ARE INSTALLED. THESE ELEMENTS ARE AS FOLLOWS: LATERAL BRACING, ANCHOR BOLTS, ETC.
9. CONTRACTOR SHALL DETERMINE EXACT LOCATION OF EXISTING UTILITIES, DRAIN PIPES, VENTS, ETC. BEFORE COMMENCING WORK.
10. INCORRECTLY FABRICATED, DAMAGED, OR OTHERWISE MISFITTING OR NONCONFORMING MATERIALS OR CONDITIONS SHALL BE REPORTED TO THE OWNER PRIOR TO REMEDIAL OR CORRECTIVE ACTION. ANY SUCH REMEDIAL ACTION SHALL REQUIRE WRITTEN APPROVAL BY THE OWNER'S REPRESENTATIVE PRIOR TO PROCEEDING.
11. EACH CONTRACTOR SHALL COOPERATE WITH THE OWNER'S REPRESENTATIVE, AND COORDINATE HIS WORK WITH THE WORK OF OTHERS.
12. CONTRACTOR SHALL REPAIR ANY DAMAGE CAUSED BY CONSTRUCTION OF THIS PROJECT TO MATCH EXISTING PRE-CONSTRUCTION CONDITIONS TO THE SATISFACTION OF THE VERIZON WIRELESS CONSTRUCTION MANAGER.
13. ALL CABLE/CONDUIT ENTRY/EXIT PORTS SHALL BE WEATHERPROOFED DURING INSTALLATION USING A SILICONE SEALANT.
14. WHERE EXISTING CONDITIONS DO NOT MATCH THOSE SHOWN IN THIS PLAN SET, CONTRACTOR WILL NOTIFY ENGINEER, CONSTRUCTION MANAGER, AND LANDLORD IMMEDIATELY.
15. CONTRACTOR SHALL ENSURE ALL SUBCONTRACTORS ARE PROVIDED WITH A CURRENT SET OF DRAWINGS AND SPECIFICATIONS FOR THIS PROJECT.
16. ALL ROOF WORK SHALL BE DONE BY A QUALIFIED AND EXPERIENCED ROOFING CONTRACTOR IN COORDINATION WITH ANY CONTRACTOR WARRANTING THE ROOF TO ENSURE THAT THE WARRANTY IS MAINTAINED.
17. CONTRACTOR SHALL REMOVE ALL RUBBISH AND DEBRIS FROM THE SITE AT THE END OF EACH DAY.
18. CONTRACTOR SHALL COORDINATE WORK SCHEDULE WITH LANDLORD AND TAKE PRECAUTIONS TO MINIMIZE IMPACT AND DISRUPTION OF OTHER OCCUPANTS OF THE FACILITY.
19. CONTRACTOR SHALL FURNISH THE CARRIER WITH THREE AS-BUILT SETS OF DRAWINGS UPON COMPLETION OF WORK.
20. ANTENNAS AND CABLES ARE TYPICALLY PROVIDED BY VERIZON WIRELESS. PRIOR TO SUBMISSION OF BID, CONTRACTOR SHALL COORDINATE WITH VERIZON WIRELESS PROJECT MANAGER TO DETERMINE WHAT, IF ANY, ITEMS WILL BE PROVIDED BY VERIZON WIRELESS. ALL ITEMS NOT PROVIDED BY VERIZON WIRELESS SHALL BE PROVIDED AND INSTALLED BY THE CONTRACTOR. CONTRACTOR WILL INSTALL ALL ITEMS PROVIDED BY VERIZON WIRELESS.
21. PRIOR TO SUBMISSION OF BID, CONTRACTOR WILL COORDINATE WITH VERIZON WIRELESS PROJECT MANAGER TO DETERMINE IF ANY PERMITS WILL BE OBTAINED BY VERIZON WIRELESS. ALL REQUIRED PERMITS NOT OBTAINED BY VERIZON WIRELESS MUST BE OBTAINED, AND PAID FOR, BY THE CONTRACTOR.
22. IF APPLICABLE, THE GENERAL CONTRACTOR SHALL HAVE A LICENSED HVAC CONTRACTOR START THE HVAC UNITS, SYNCHRONIZE THE THERMOSTATS, ADJUST ALL SETTINGS ON EACH UNIT ACCORDING TO VERIZON WIRELESS CONSTRUCTION MANAGER'S SPECIFICATIONS, AND THOROUGHLY TEST AND BALANCE EACH UNIT TO ENSURE PROPER OPERATION PRIOR TO TURNING THE SITE OVER TO OWNER.
23. CONTRACTOR SHALL SUBMIT ALL SHOP DRAWINGS TO ENGINEER FOR REVIEW AND APPROVAL PRIOR TO FABRICATION.
24. ALL EQUIPMENT SHALL BE INSTALLED ACCORDING TO MANUFACTURER'S SPECIFICATIONS AND LOCATED ACCORDING TO VERIZON WIRELESS SPECIFICATIONS, AND AS SHOWN IN THESE PLANS.
25. CONTRACTOR SHALL NOTIFY THE ENGINEER A MINIMUM OF 48 HOURS IN ADVANCE PRIOR TO CONSTRUCTION START, MORE SPECIFICALLY BEFORE; SEALING ANY FLOOR, WALL OR ROOF PENETRATION, FINAL UTILITY CONNECTIONS, POURING CONCRETE, BACKFILLING UTILITY TRENCHES AND STRUCTURAL POST OR MOUNTING CONNECTIONS, FOR ENGINEERING REVIEW AND INSPECTION.
26. CONTRACTOR SHALL BE RESPONSIBLE FOR SITE SAFETY INCLUDING COMPLIANCE WITH ALL APPLICABLE OSHA STANDARDS AND RECOMMENDATIONS AND SHALL PROVIDE ALL NECESSARY SAFETY DEVICES INCLUDING PPE AND PPM AND CONSTRUCTION DEVICES SUCH AS WELDING AND FIRE PREVENTION, TEMPORARY SHORING, SCAFFOLDING, TRENCH BOXES/SLOPING, BARRIERS, ETC.
27. DETECTION WIRE SHALL BE BURIED DIRECTLY ABOVE NON-METALLIC PIPING AT A DISTANCE NOT TO EXCEED TWELVE (12) INCHES ABOVE THE TOP OF PIPE. THE WIRE SHALL EXTEND CONTINUOUSLY AND UNBROKEN FROM POINT OF ACCESS TO POINT OF ACCESS. THE ENDS OF THE WIRE SHALL TERMINATE WITH A MINIMUM OF THREE (3) FEET OF WIRE, COILED, REMAINING ACCESSIBLE AT TERMINATION POINTS. DETECTION WIRE SHALL BE 12 GAUGE FOR A BURIED DEPTH OF LESS THAN 4 FEET AND 4 GAUGE FOR A BURIED DEPTH GREATER THAN OR EQUAL TO 4 FEET.
28. THE CONTRACTOR SHALL GIVE ALL NOTICES AND REGULATIONS AND LAWFUL ORDERS OF ANY PUBLIC AUTHORITY. MUNICIPAL AND UTILITY COMPANY SPECIFICATIONS, AND LOCAL AND STATE JURISDICTIONAL CODES BEARING ON THE PERFORMANCE OF THE WORK. THE WORK PERFORMED ON THE PROJECT AND THE MATERIALS INSTALLED SHALL BE IN STRICT ACCORDANCE WITH ALL APPLICABLE CODES, REGULATIONS, AND ORDINANCES.
29. THE CONTRACTOR OR BIDDER SHALL BEAR THE RESPONSIBILITY OF NOTIFYING (IN WRITING) THE CONSTRUCTION MANAGER OF ANY CONFLICTS, ERRORS OR OMISSIONS PRIOR TO THE SUBMISSION OF CONTRACTOR'S PROPOSAL OR PERFORMANCE OF WORK. IN THE EVENT OF DISCREPANCIES, THE CONTRACTOR SHALL PRICE THE MORE COSTLY OR EXTENSIVE WORK, UNLESS DIRECTED IN WRITING OTHERWISE.
30. THE SCOPE OF WORK SHALL INCLUDE FURNISHING ALL MATERIALS, EQUIPMENT, LABOR AND ALL OTHER MATERIALS AND LABOR DEEMED NECESSARY TO COMPLETE THE WORK/PROJECT AS DESCRIBED HEREIN.
31. THE CONTRACTOR SHALL OBTAIN AUTHORIZATION TO PROCEED WITH CONSTRUCTION PRIOR TO STARTING WORK ON ANY ITEM NOT CLEARLY DEFINED BY THE CONSTRUCTION DRAWINGS/CONTRACT DOCUMENTS.
32. THE CONTRACTOR SHALL INSTALL ALL EQUIPMENT AND MATERIALS ACCORDING TO THE MANUFACTURER'S/VENDORS SPECIFICATIONS UNLESS OTHERWISE OR WHERE LOCAL CODES OR ORDINANCES TAKE PRECEDENCE.
33. THE CONTRACTOR SHALL PROVIDE A FULL SET OF CONSTRUCTION DOCUMENTS AT THE SITE UPDATED WITH THE LATEST REVISIONS AND ADDENDUMS OR CLARIFICATIONS AVAILABLE FOR THE USE BY ALL PERSONNEL INVOLVED WITH THE PROJECT.

34. THE CONTRACTOR SHALL SUPERVISE AND DIRECT THE PROJECT DESCRIBED HEREIN. THE CONTRACTOR SHALL BE SOLELY RESPONSIBLE FOR ALL THE CONSTRUCTION MEANS, METHODS, TECHNIQUES, SEQUENCES AND PROCEDURES AND FOR COORDINATING ALL PORTIONS OF THE WORK UNDER THE CONTRACT.
35. THE CONTRACTOR SHALL BE RESPONSIBLE FOR OBTAINING ALL PERMITS AND INSPECTIONS WHICH MAY BE REQUIRED FOR THE WORK BY THE ARCHITECT/ENGINEER, THE STATE, COUNTY OR LOCAL GOVERNMENT AUTHORITY.
36. THE CONTRACTOR SHALL MAKE NECESSARY PROVISIONS TO PROTECT EXISTING IMPROVEMENTS, EASEMENTS, PAVEMENTS, CURBING, ETC. DURING CONSTRUCTION. UPON COMPLETION OF WORK, THE CONTRACTOR SHALL REPAIR ANY DAMAGE THAT MAY HAVE OCCURRED DUE TO CONSTRUCTION ON OR ABOUT THE PROPERTY.
37. THE CONTRACTOR SHALL MAINTAIN THE GENERAL WORK AREA AS CLEAN AND HAZARD FREE DURING CONSTRUCTION AND DISPOSE OF ALL DIRT, DEBRIS, RUBBISH AND REMOVE EQUIPMENT NOT SPECIFIED AS REMAINING ON THE PROPERTY. PREMISES SHALL BE LEFT IN CLEAN CONDITION AND FREE FROM PAINT SPOTS, DUST, OR SMUDGES OF ANY NATURE.
38. THE CONTRACTOR SHALL COMPLY WITH ALL OSHA REQUIREMENTS AS THEY APPLY TO THIS PROJECT.
39. THE CONTRACTOR SHALL NOTIFY THE CONSTRUCTION MANAGER WHERE A CONFLICT OCCURS ON ANY OF THE CONTRACT DOCUMENTS. THE CONTRACTOR IS NOT TO ORDER MATERIAL OR CONSTRUCT ANY PORTION OF THE WORK THAT IS IN CONFLICT UNTIL CONFLICT IS RESOLVED BY THE CONSTRUCTION MANAGER.
40. EROSION CONTROL MEASURES SHALL BE IN CONFORMANCE WITH THE LOCAL GUIDELINES FOR EROSION AND SEDIMENT CONTROL.
41. ALL CONSTRUCTION AND DESIGN FOR THE PROPOSED ANTENNA MOUNTS SHALL CONFORM IN ACCORDANCE WITH THE CURRENT STRUCTURAL STANDARDS FOR STEEL ANTENNA TOWERS AND ANTENNA SUPPORTING STRUCTURES.
42. CONTRACTOR TO VERIFY ANTENNA ELEVATION AND AZIMUTH WITH RF ENGINEERING PRIOR TO INSTALLATION.
43. THE CONTRACTOR SHALL POST ALL SIGNS REQUIRED BY THE LATEST VERSION OF THE VERIZON WIRELESS "RADIO FREQUENCY COMPLIANCE SIGNAGE & DEMARCATION POLICY" THIS MAY INCLUDE BUT ARE NOT LIMITED TOO:
- A. NOTICE SIGNS TO DISTINGUISH THE BOUNDARY BETWEEN GENERAL POPULATION/UNCONTROLLED AREAS AND OCCUPATIONAL AREAS
- B. CAUTION SIGNS TO DISTINGUISH THE CONTROLLED AREAS WHERE RADIO FREQUENCY (RF) EXPOSURE CAN EXCEED THE OCCUPATIONAL/CONTROLLED MAXIMUM PERMISSIBLE EXPOSURE (MPE) LIMIT.
- C. WARNING SIGNS TO DISTINGUISH THE BOUNDARY OF AREAS WITH RF LEVELS SUBSTANTIALLY ABOVE THE FCC LIMITS, GREATER THAN TEN (10) TIMES THE OCCUPATIONAL/CONTROLLED MPE LIMIT.
- D. NOTICE-GUIDELINES FOR WORKING IN RADIOFREQUENCY ENVIRONMENTS: THIS SIGN IS TO BE POSTED ANYTIME SIGNAGE IS REQUIRED TO ACHIEVE FCC COMPLIANCE. IT MUST BE POSTED ON EVERY ACCESS POINT WHERE VERIZON IS EXPECTED TO EXCEED THE FCC GENERAL POPULATION EXPOSURE LIMIT AND ON EVERY ANTENNA ARRAY IN ACCESSIBLE AREAS.



VERIZON WIRELESS
1831 RADY COURT
RICHMOND, VA 23222

**HARRISONBURG
N001, N004, & N005**

CONSTRUCTION DRAWINGS

0	03/06/17	FOR CONSTRUCTION



Dewberry Engineers Inc.

4835 Leko Brook Drive, Suite 200
Claremont, VA 23060
Phone: 804.290.7567
Fax: 804.290.7568
www.dewberry.com



DRAWN BY: MAF

REVIEWED BY: DRM

CHECKED BY: DRM

PROJECT NUMBER: 50075169

SITE ADDRESS:

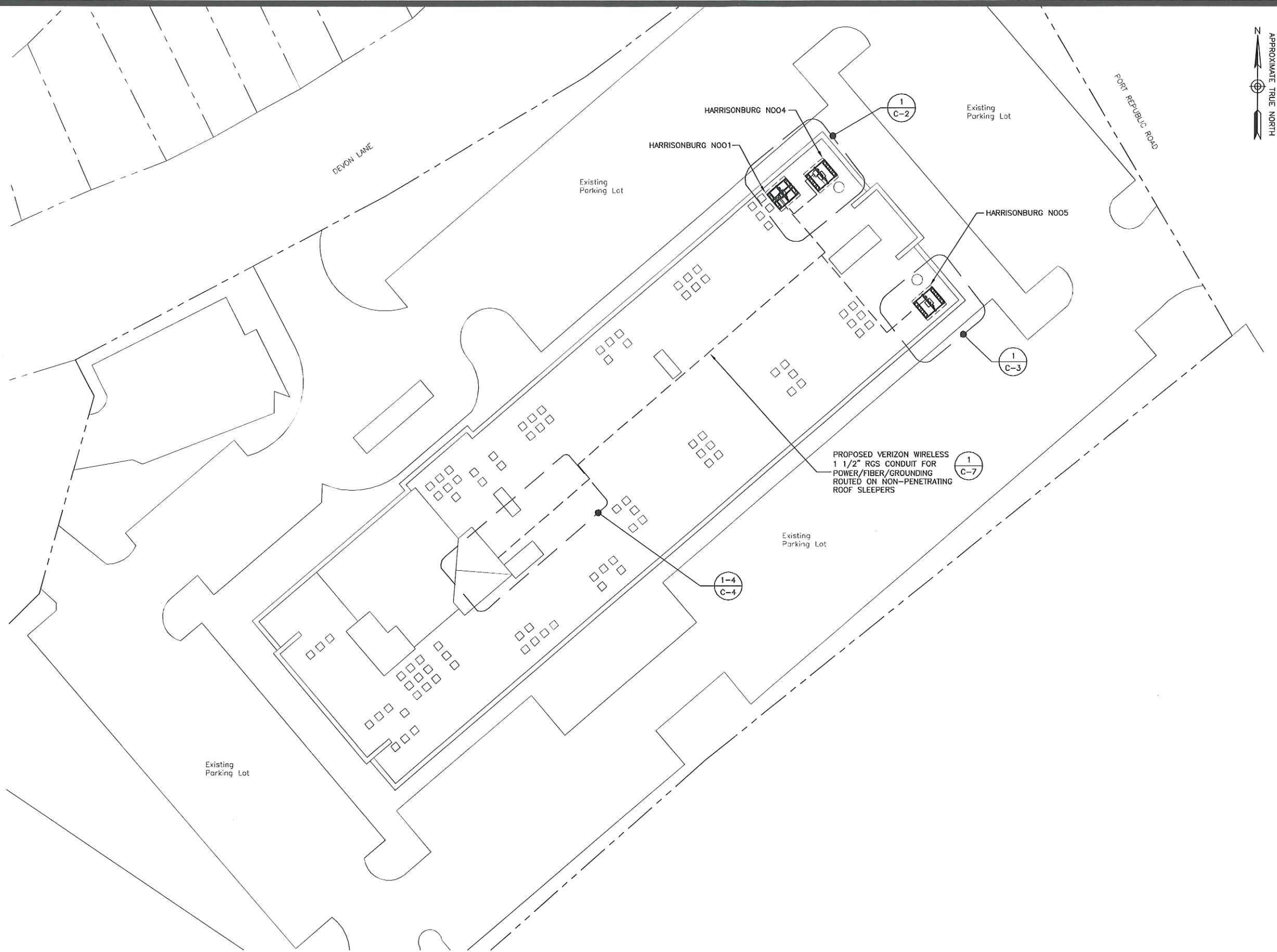
865 PORT REPUBLIC ROAD
HARRISONBURG, VA 22801

SHEET TITLE

GENERAL NOTES

SHEET NUMBER

G-1



SITE PLAN
SCALE: 1"=80' FOR 11x17
1"=40' FOR 22x34
0' 40' 80'



VERIZON WIRELESS
1831 RADY COURT
RICHMOND, VA 23222

**HARRISONBURG
N001, N004, & N005**

CONSTRUCTION DRAWINGS

0	03/06/17	FOR CONSTRUCTION



Dewberry Engineers Inc.
4805 Lake Brook Drive, Suite 200
Glenn Allen, VA 23060
Phone: 804.290.7537
Fax: 804.290.7328
www.dewberry.com



DRAWN BY: MAF

REVIEWED BY: DRM

CHECKED BY: DRM

PROJECT NUMBER: 50075169

SITE ADDRESS:

865 PORT REPUBLIC ROAD
HARRISONBURG, VA 22801

SHEET TITLE

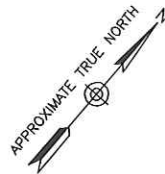
SITE PLAN

SHEET NUMBER

C-1

PRIOR TO BEGINNING CONSTRUCTION CONTRACTOR SHALL REFER TO STRUCTURAL ANALYSIS TITLED HARRISONBURG N001 COMPLETED BY DEWBERRY ENGINEERS INC. DATED, FEBRUARY 2, 2017.

PRIOR TO BEGINNING CONSTRUCTION CONTRACTOR SHALL REFER TO STRUCTURAL ANALYSIS TITLED HARRISONBURG N004 COMPLETED BY DEWBERRY ENGINEERS INC. DATED, FEBRUARY 1, 2016.



VERIZON WIRELESS
1831 RADY COURT
RICHMOND, VA 23222

HARRISONBURG N001, N004, & N005

CONSTRUCTION DRAWINGS

0 03/06/17 FOR CONSTRUCTION



Dewberry Engineers Inc.

4835 Lake Brook Drive, Suite 200
Glenn Allen, VA 23060
Phone: 804.290.7557
Fax: 804.290.7928
www.dewberry.com



DRAWN BY: MAF

REVIEWED BY: DRM

CHECKED BY: DRM

PROJECT NUMBER: 50075169

SITE ADDRESS:

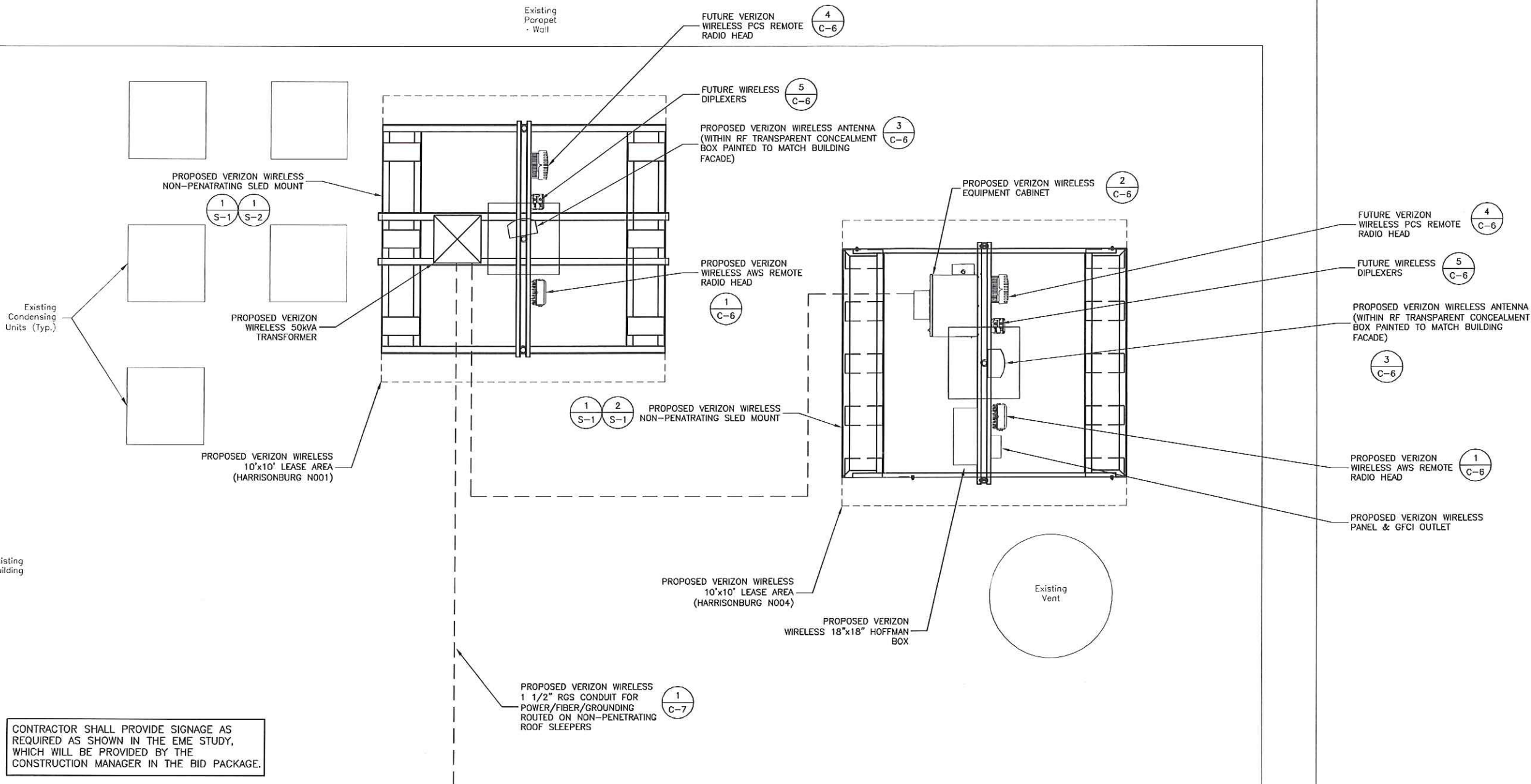
865 PORT REPUBLIC ROAD
HARRISONBURG, VA 22801

SHEET TITLE

ROOF PLAN

SHEET NUMBER

C-2



CONTRACTOR SHALL PROVIDE SIGNAGE AS REQUIRED AS SHOWN IN THE EME STUDY, WHICH WILL BE PROVIDED BY THE CONSTRUCTION MANAGER IN THE BID PACKAGE.

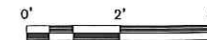
GENERAL NOTES

1. THE HOFFMAN FIBER BOX SHOULD BE LOCKED WITH COMBO LOCKS.
2. USE WEATHER TIGHT CONNECTIONS FOR ALL CONDUITS CONNECTING TO EQUIPMENT.
3. THE ALARM CABLING SHOULD BE PLACED INSIDE A LIQUID TIGHT CONDUIT AND USE ITS OWN KNOCK-OUT TO ENTER THE EQUIPMENT CABINET.
4. CONTRACTOR TO MAKE SURE THAT THE EQUIPMENT IS INSTALLED WITHIN THE PROPOSED LEASE AREA.
5. ALL CONDUITS AND COAX SHOULD BE SECURELY FASTENED TO THE UNISTRUT, H-FRAME OR SLED MOUNT.
6. ALARM CONDUIT MUST END WITHIN 6" OF RRH PORT.
7. SOME EXISTING & PROPOSED INFORMATION NOT SHOWN FOR CLARITY.
8. ANTENNA, EQUIPMENT, AND EASEMENTS SUBJECT TO CHANGE.

ROOF PLAN

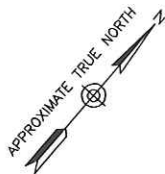
SCALE: 1"=4' FOR 11x17

1"=2' FOR 22x34



1

PRIOR TO BEGINNING CONSTRUCTION CONTRACTOR SHALL REFER TO STRUCTURAL ANALYSIS TITLED HARRISONBURG N005 COMPLETED BY DEWBERRY ENGINEERS INC. DATED, FEBRUARY 2, 2017



VERIZON WIRELESS
1831 RADY COURT
RICHMOND, VA 23222

HARRISONBURG N001, N004, & N005

CONSTRUCTION DRAWINGS

0	03/06/17	FOR CONSTRUCTION



Dewberry Engineers Inc.

4805 Lake Brook Drive, Suite 200
Glen Allen, VA 23060
Phone: 804.290.7557
Fax: 804.290.7928
www.dewberry.com



DRAWN BY: MAF

REVIEWED BY: DRM

CHECKED BY: DRM

PROJECT NUMBER: 50075189

SITE ADDRESS:

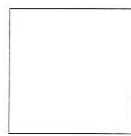
865 PORT REPUBLIC ROAD
HARRISONBURG, VA 22801

SHEET TITLE

ROOF PLAN

SHEET NUMBER

C-3



Existing
Condensing
Units

Existing
Building

Existing
Vent

Existing
Parapet
Wall

PROPOSED VERIZON WIRELESS
HYBRID CABLE AND GROUNDING
CONDUIT ROUTED ON
NON-PENETRATING ROOF
SLEEPERS

1
C-7

CABLE/CONDUIT LENGTH = ±120'

1
S-1

2
S-1

PROPOSED VERIZON WIRELESS
NON-PENETRATING SLED MOUNT

PROPOSED VERIZON WIRELESS
10'x10' LEASE AREA
(HARRISONBURG N005)

Existing
Parapet
Wall

FUTURE VERIZON
WIRELESS PCS REMOTE
RADIO HEAD

4
C-6

FUTURE VERIZON
WIRELESS PCS REMOTE
RADIO HEAD

5
C-6

PROPOSED VERIZON
WIRELESS ANTENNA
(WITHIN RF TRANSPARENT
CONCEALMENT BOX
PAINTED TO MATCH
BUILDING FACADE)

3
C-6

PROPOSED VERIZON
WIRELESS AWS REMOTE
RADIO HEAD

1
C-6

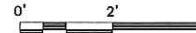
GENERAL NOTES

1. THE HOFFMAN FIBER BOX SHOULD BE LOCKED WITH COMBO LOCKS.
2. USE WEATHER TIGHT CONNECTIONS FOR ALL CONDUITS CONNECTING TO EQUIPMENT.
3. THE ALARM CABLING SHOULD BE PLACED INSIDE A LIQUID TIGHT CONDUIT AND USE ITS OWN KNOCK-OUT TO ENTER THE EQUIPMENT CABINET.
4. CONTRACTOR TO MAKE SURE THAT THE EQUIPMENT IS INSTALLED WITHIN THE PROPOSED LEASE AREA.
5. ALL CONDUITS AND COAX SHOULD BE SECURELY FASTENED TO THE UNISTRUT, H-FRAME OR SLED MOUNT.
6. ALARM CONDUIT MUST END WITHIN 6" OF RRH PORT.
7. SOME EXISTING & PROPOSED INFORMATION NOT SHOWN FOR CLARITY.
8. ANTENNA, EQUIPMENT, AND EASEMENTS SUBJECT TO CHANGE.

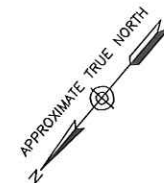
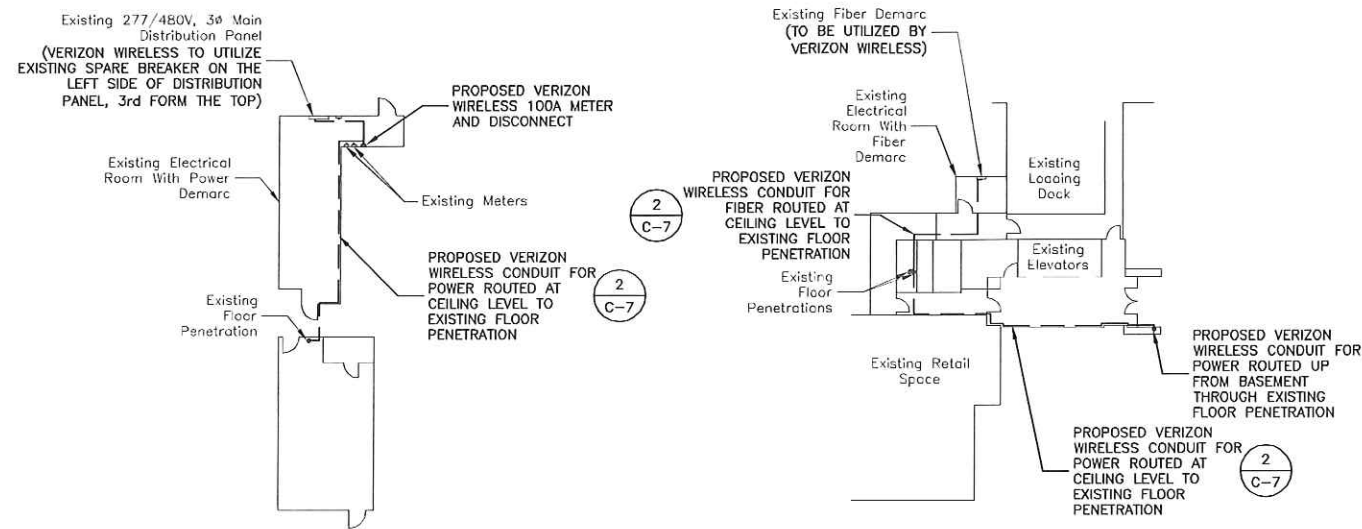
CONTRACTOR SHALL PROVIDE SIGNAGE AS
REQUIRED AS SHOWN IN THE EME STUDY,
WHICH WILL BE PROVIDED BY THE
CONSTRUCTION MANAGER IN THE BID PACKAGE.

ROOF PLAN

SCALE: 1"=4' FOR 11x17
1"=2' FOR 22x34



1

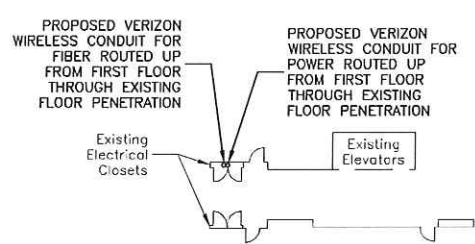


PARTIAL BUILDING PLAN FOR POWER ROUTING BASEMENT

SCALE: 1"=40' FOR 11x17
1"=20' FOR 22x34

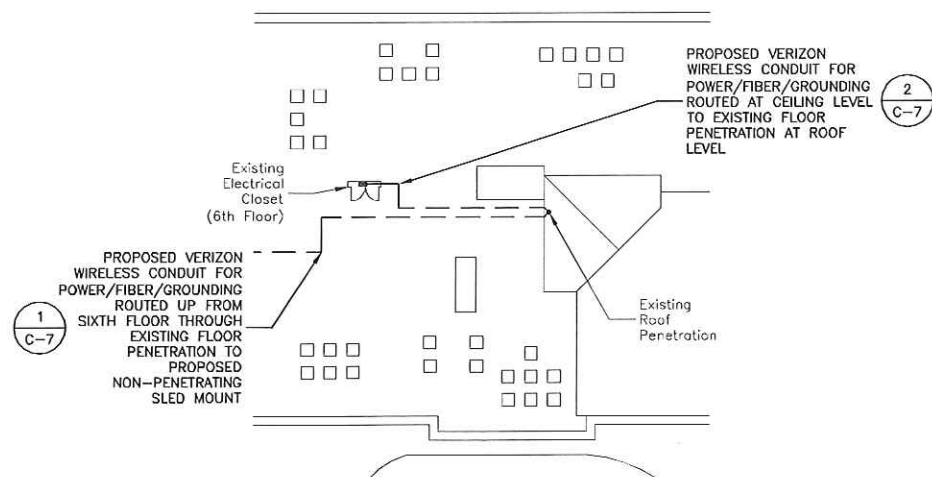
PARTIAL INTERIOR PLAN FOR FIBER/POWER ROUTING FIRST FLOOR

SCALE: 1"=40' FOR 11x17
1"=20' FOR 22x34



PARTIAL INTERIOR PLAN FOR FIBER/POWER ROUTING FLOORS 2 - 6

SCALE: 1"=40' FOR 11x17
1"=20' FOR 22x34



PARTIAL INTERIOR PLAN FOR FIBER/POWER ROUTING FLOOR 6 - ROOF

SCALE: 1"=40' FOR 11x17
1"=20' FOR 22x34

NOTES:

1. SOME EXISTING & PROPOSED INFORMATION NOT SHOWN FOR CLARITY.



VERIZON WIRELESS
1831 RADY COURT
RICHMOND, VA 23222

**HARRISONBURG
N001, N004, & N005**

CONSTRUCTION DRAWINGS

0	03/06/17	FOR CONSTRUCTION



Dewberry Engineers Inc.
4835 Lake Brook Drive, Suite 200
Glen Allen, VA 23060
Phone: 804.290.7557
Fax: 804.290.7928
www.dewberry.com



DRAWN BY:	MAF
REVIEWED BY:	DRM
CHECKED BY:	DRM
PROJECT NUMBER:	50075169

SITE ADDRESS:

865 PORT REPUBLIC ROAD
HARRISONBURG, VA 22801

SHEET TITLE

INTERIOR PLANS

SHEET NUMBER

C-4

HARRISONBURG N005 RF
TRANSPARENT CONCEALMENT BOX
PAINTED TO MATCH BUILDING
FACADE (DESIGNED BY OTHERS)

HARRISONBURG N001 RF
TRANSPARENT CONCEALMENT BOX
PAINTED TO MATCH BUILDING
FACADE (DESIGNED BY OTHERS)

HARRISONBURG N004 RF
TRANSPARENT CONCEALMENT BOX
PAINTED TO MATCH BUILDING
FACADE (DESIGNED BY OTHERS)

Overall Height
Structure Height
Elev. = 69.0' ± A.G.L.
C.L. OF PROPOSED ANTENNA
ELEV. = 68.0' ± A.G.L.
Top Of Lower Parapet
Elev. = 65.3' ± A.G.L.
Top Of Roof
Elev. = 60.7' ± A.G.L.



Existing Ground
Elev. = 0.0' A.G.L.

ELEVATION
SCALE: 3/32"=1' FOR 11x17
3/16"=1' FOR 22x34
0' 4' 8' 12'

1



VERIZON WIRELESS
1831 RADY COURT
RICHMOND, VA 23222

**HARRISONBURG
N001, N004, & N005**

CONSTRUCTION DRAWINGS

0	03/06/17	FOR CONSTRUCTION



Dewberry Engineers Inc.
4805 Lake Brook Drive, Suite 200
Claremont, VA 23060
Phone: 804.290.7557
Fax: 804.290.7928
www.dewberry.com



DRAWN BY: MAF
REVIEWED BY: DRM
CHECKED BY: DRM
PROJECT NUMBER: 50075189

SITE ADDRESS:

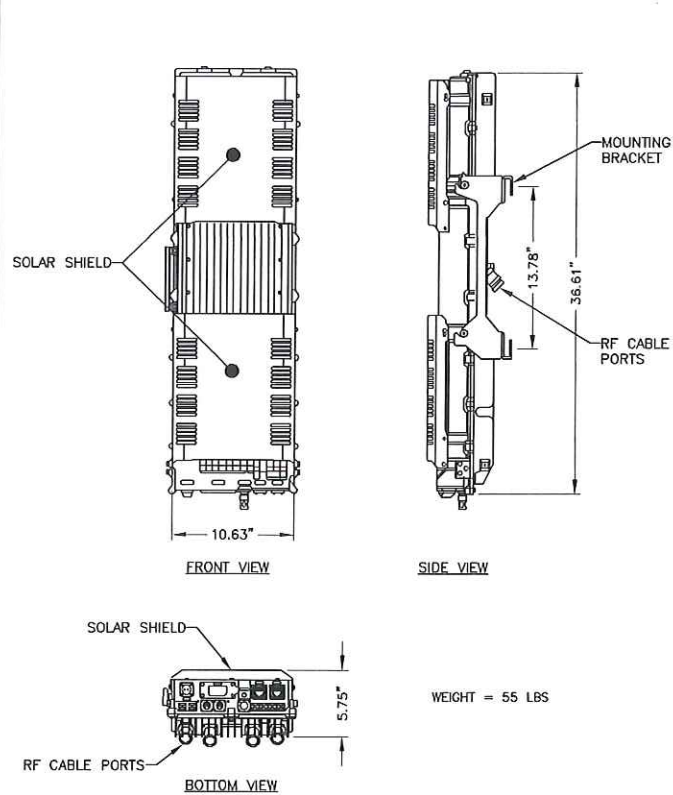
865 PORT REPUBLIC ROAD
HARRISONBURG, VA 22801

SHEET TITLE

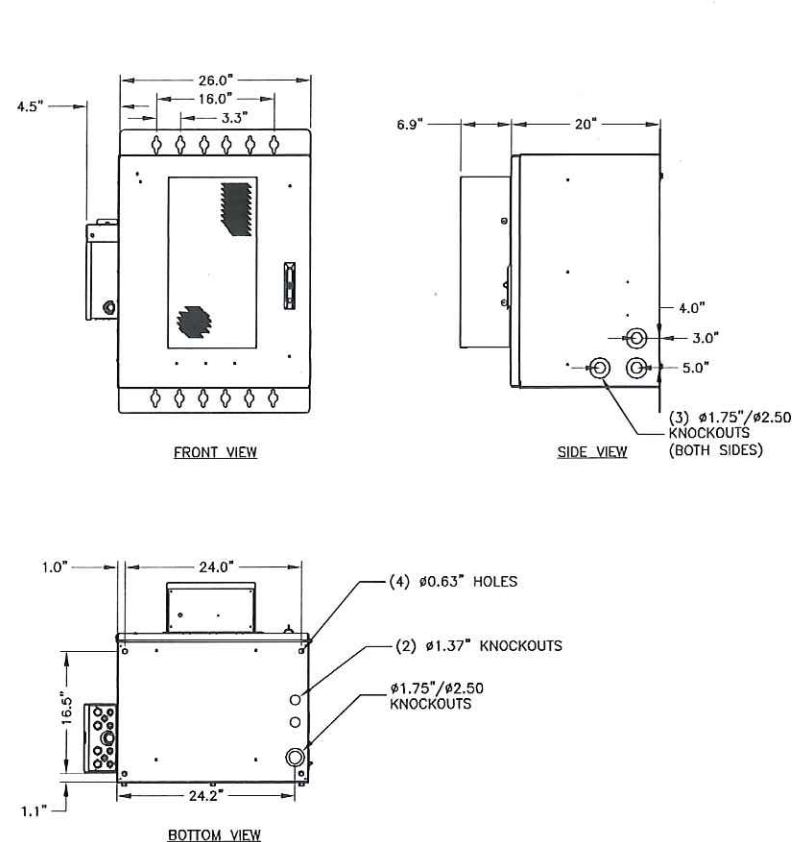
ELEVATION

SHEET NUMBER

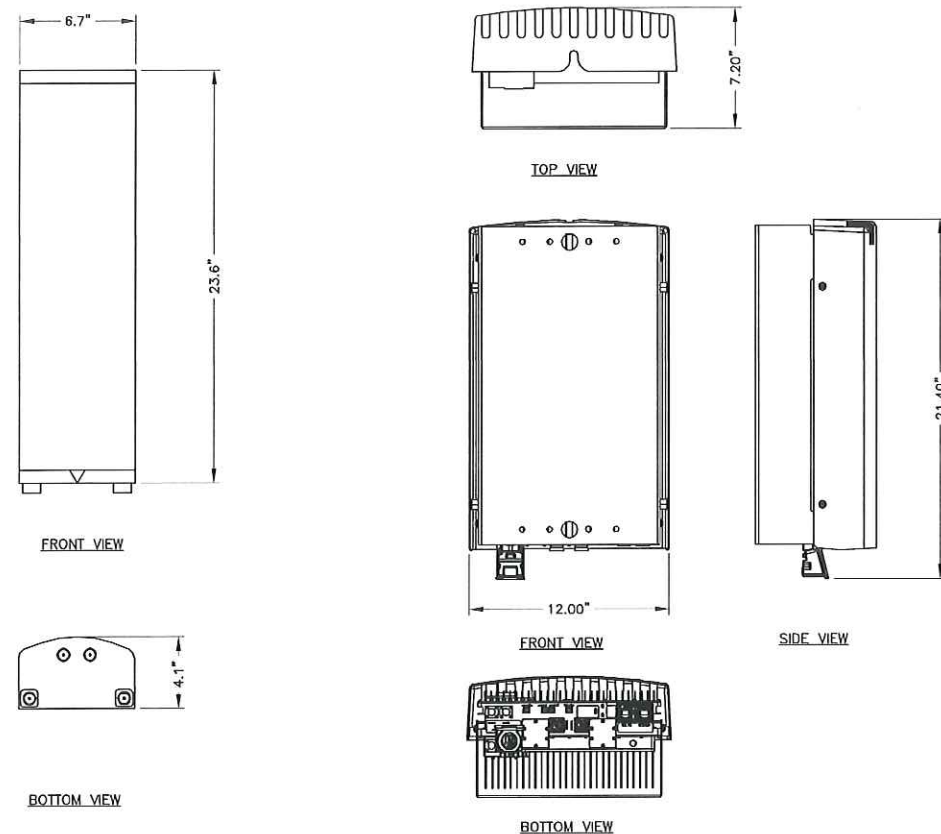
C-5



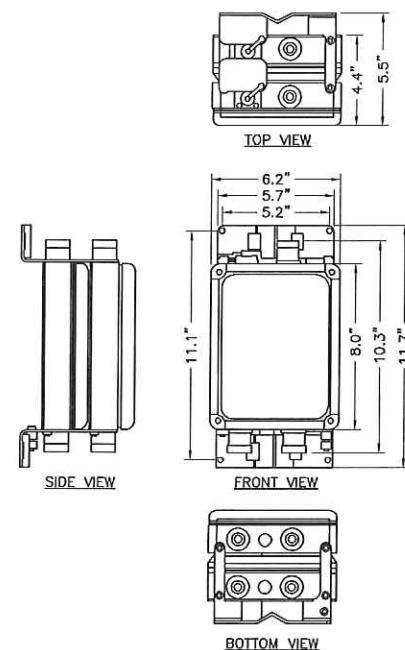
AWS RRH 2x60 (REMOTE RADIO HEAD)
SCALE: N.T.S.



RL21611 E EQUIPMENT CABINET
SCALE: N.T.S.



**PCS RRH4x30-B25
(REMOTE RADIO HEAD)**
SCALE: N.T.S.



DIPLEXER DETAIL
SCALE: N.T.S.

HARRISONBURG N001 RF SYSTEM SCHEDULE								
ANTENNA SECTOR	STATUS	ANTENNA MANUFACTURER	ANTENNA MODEL	RAD CENTER	ANTENNA AZIMUTH	DOWN TILT	RRH QUANTITY & MODEL	CABLE SIZE AND QUANTITY
ALPHA	PROPOSED	ANDREW	V65S-1XR	68'	310'	6'	(1) PCS RRH4x30-B25 (1) AWS RRH2x60	(2) - 1/2"φ

NOTE: 1. ALL CHANGES TO THIS SCHEDULE SHOULD BE APPROVED BY VERIZON RF ENGINEERING.

HARRISONBURG N004 RF SYSTEM SCHEDULE								
ANTENNA SECTOR	STATUS	ANTENNA MANUFACTURER	ANTENNA MODEL	RAD CENTER	ANTENNA AZIMUTH	DOWN TILT	RRH QUANTITY & MODEL	CABLE SIZE AND QUANTITY
ALPHA	PROPOSED	ANDREW	V65S-1XR	68'	45'	0'	(1) PCS RRH4x30-B25 (1) AWS RRH2x40	(4) - 1/2"φ

NOTE: 1. ALL CHANGES TO THIS SCHEDULE SHOULD BE APPROVED BY VERIZON RF ENGINEERING.

RF SYSTEM SCHEDULE								
ANTENNA SECTOR	STATUS	ANTENNA MANUFACTURER	ANTENNA MODEL	RAD CENTER	ANTENNA AZIMUTH	DOWN TILT	RRH QUANTITY & MODEL	CABLE SIZE AND QUANTITY
ALPHA	PROPOSED	ANDREW	V65S-1XR	68'	125'	0'	(1) PCS RRH4x30-B25 (1) AWS RRH2x60	(2) - 1/2"φ

NOTE: 1. ALL CHANGES TO THIS SCHEDULE SHOULD BE APPROVED BY VERIZON RF ENGINEERING.

NOTES:

1. CONTRACTOR TO VERIFY ANTENNA INFORMATION WITH CONSTRUCTION MANAGER PRIOR TO CONSTRUCTION.
2. CONTRACTOR TO VERIFY PROPOSED ANTENNA INFORMATION IS THE MOST CURRENT DATA AT TIME OF CONSTRUCTION.
3. CONTRACTOR TO CONFIRM CABLE LENGTHS PRIOR TO CONSTRUCTION.
4. CONTRACTOR IS RESPONSIBLE TO BUILD FROM THE LATEST RF SHEET.



VERIZON WIRELESS
1831 RADY COURT
RICHMOND, VA 23222

**HARRISONBURG
N001, N004, & N005**

CONSTRUCTION DRAWINGS

0	03/06/17	FOR CONSTRUCTION
---	----------	------------------



Dewberry Engineers Inc.
4835 Leko Brook Drive, Suite 200
Chesapeake, VA 23060
Phone: 804.290.7557
Fax: 804.290.7908
www.dewberry.com



DRAWN BY:	MAF
REVIEWED BY:	DRM
CHECKED BY:	DRM
PROJECT NUMBER:	50075169

SITE ADDRESS:

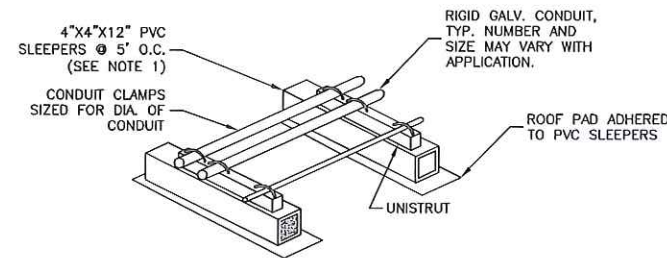
865 PORT REPUBLIC ROAD
HARRISONBURG, VA 22801

SHEET TITLE

CONSTRUCTION DETAILS

SHEET NUMBER

C-6



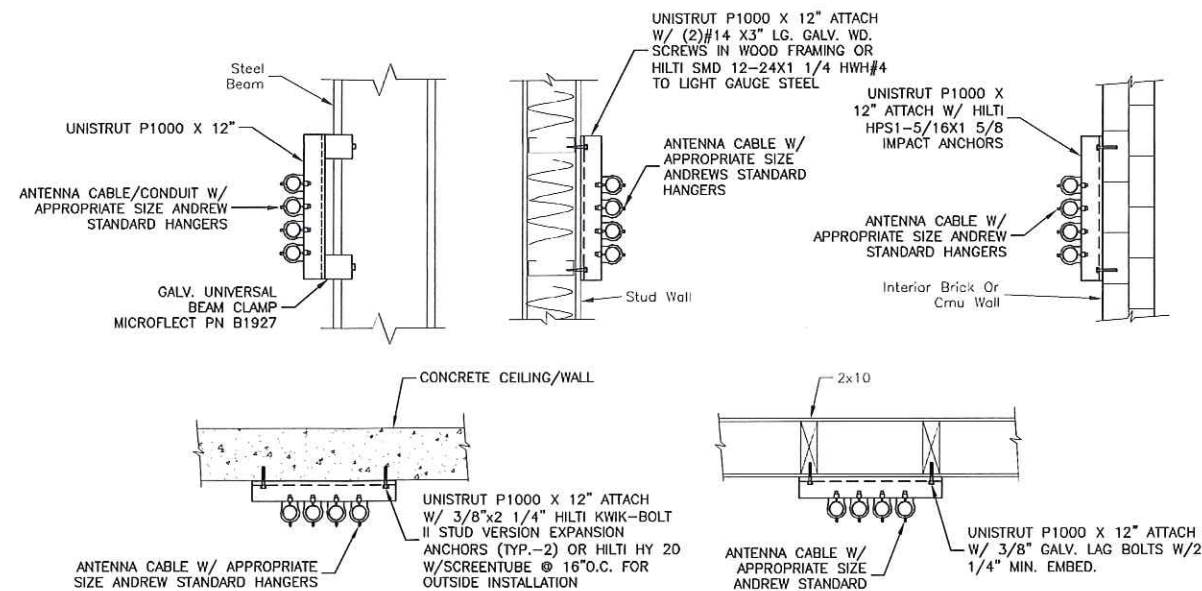
NOTE:

1. PVC SLEEPERS TO BE FILLED WITH CONCRETE EVERY 5'-0\".

CONDUIT ON PVC SLEEPERS

SCALE: N.T.S.

1



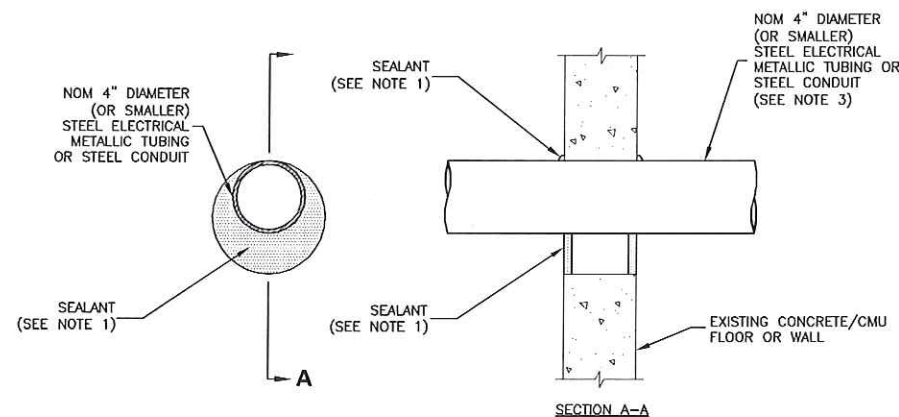
NOTES:

1. ALL COAX CABLE SUPPORT SPACING: 4'-0\" MAX.
2. ALL CONDUIT SUPPORT SPACING: 10' MAX.

CABLE CONDUIT SUPPORT

SCALE: N.T.S.

2



UL SYSTEM NO. C-AJ-1259
F RATING - 3 HR.
T RATING - 0 HR.

NOTES:

1. FILL, VOID OR CAVITY MATERIAL* - SEALANT - MIN. 1/2\" THICKNESS OF FILL MATERIAL APPLIED WITHIN THE ANNULUS, FLUSH WITH BOTH SURFACES OF FLOOR OR WALL. AT THE POINT CONTACT LOCATION BETWEEN PENETRATING ITEM AND CONCRETE, A MIN. 1/4\" THICK BEAD OF FILL MATERIAL SHALL BE APPLIED AT THE CONCRETE/ PENETRATING ITEM INTERFACE ON BOTH SIDES OF FLOOR OR WALL.
2. FORMING MATERIAL - (OPTIONAL, NOT SHOWN) - MINERAL WOOL BATT PACKING MATERIAL OR POLYURETHANE BACKER ROD FRICTION FITTED INTO OPENING AND RECESSED FROM FLOOR OR WALL SURFACES AS REQUIRED TO ACCOMMODATE THICKNESS OF FILL MATERIAL.
3. ONE CONDUIT TO BE INSTALLED EITHER CONCENTRICALLY OR ECCENTRICALLY WITHIN THE FIRESTOP SYSTEM. THE ANNULAR SPACE BETWEEN THE CONDUIT AND THE PERIPHERY OF THE OPENING SHALL BE A MIN. OF 0\" (POINT OF CONTACT) TO A MAX. OF 3\". CONDUIT TO BE RIGIDLY SUPPORTED ON BOTH SIDES OF FLOOR OR WALL ASSEMBLY.

* BEARING THE UL CLASSIFICATION MARK.

CORING DETAIL

SCALE: N.T.S.

3



VERIZON WIRELESS
1831 RADY COURT
RICHMOND, VA 23222

**HARRISONBURG
N001, N004, & N005**

CONSTRUCTION DRAWINGS

0	03/06/17	FOR CONSTRUCTION



Dewberry Engineers Inc.

4805 Lake Brook Drive, Suite 200
Glen Allen, VA 23060
Phone: 804.290.7557
Fax: 804.290.7928
www.dewberry.com



DRAWN BY:	MAF
REVIEWED BY:	DRM
CHECKED BY:	DRM
PROJECT NUMBER:	50075169

SITE ADDRESS:

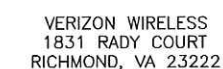
865 PORT REPUBLIC ROAD
HARRISONBURG, VA 22801

SHEET TITLE

CONSTRUCTION DETAILS

SHEET NUMBER

C-7



CONSTRUCTION DRAWINGS

0	03/06/17	FOR CONSTRUCTION



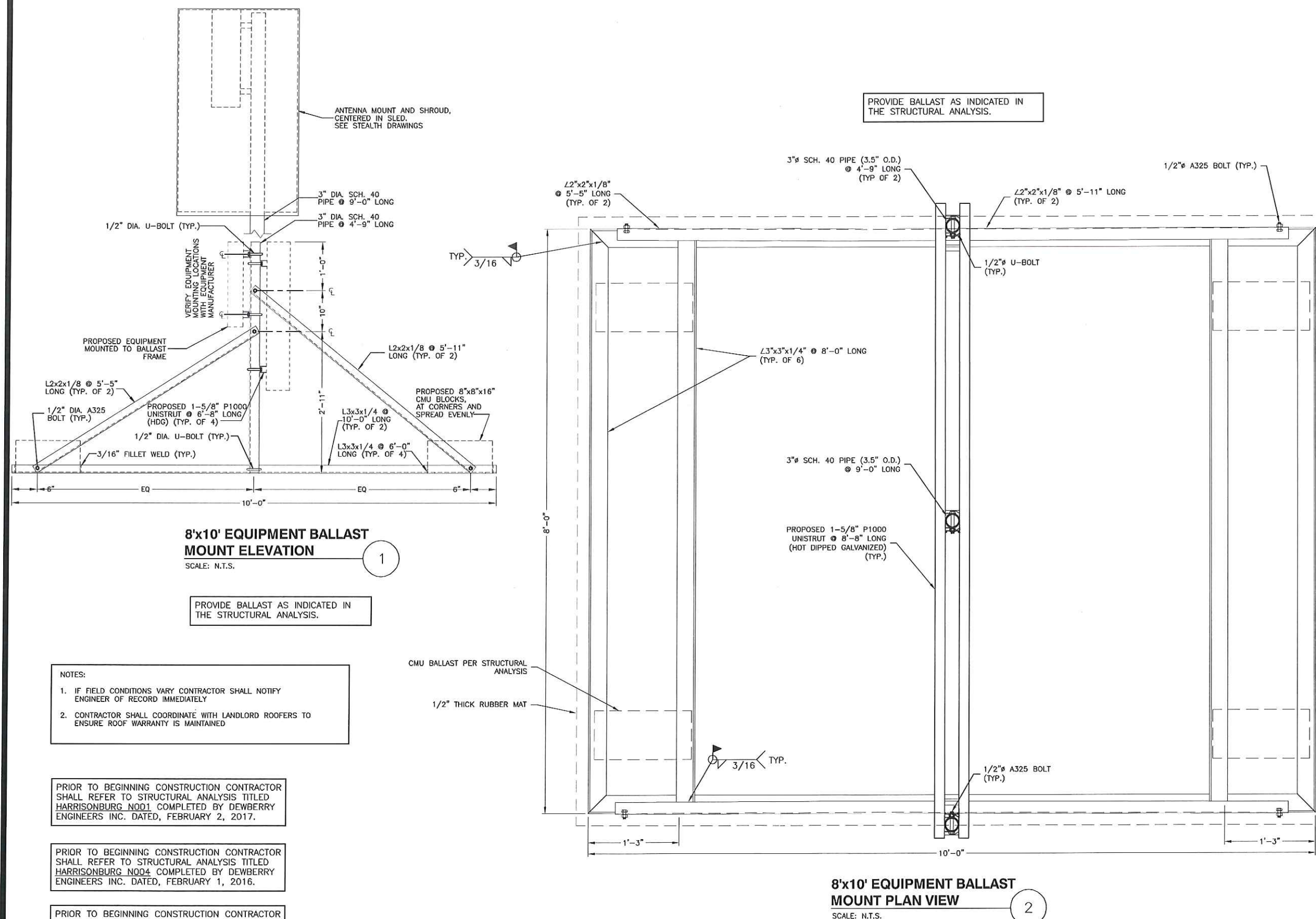
PROJECT NUMBER:	50075169
-----------------	----------

865 PORT REPUBLIC ROAD
HARRISONBURG, VA 22801

STRUCTURAL DETAILS

SHEET NUMBER

S-1



NOTES:

1. IF FIELD CONDITIONS VARY CONTRACTOR SHALL NOTIFY ENGINEER OF RECORD IMMEDIATELY
2. CONTRACTOR SHALL COORDINATE WITH LANDLORD ROOFERS TO ENSURE ROOF WARRANTY IS MAINTAINED

PRIOR TO BEGINNING CONSTRUCTION CONTRACTOR SHALL REFER TO STRUCTURAL ANALYSIS TITLED HARRISONBURG NOD1 COMPLETED BY DEWBERRY ENGINEERS INC. DATED, FEBRUARY 2, 2017.

PRIOR TO BEGINNING CONSTRUCTION CONTRACTOR SHALL REFER TO STRUCTURAL ANALYSIS TITLED HARRISONBURG NO04 COMPLETED BY DEWBERRY ENGINEERS INC. DATED, FEBRUARY 1, 2016.

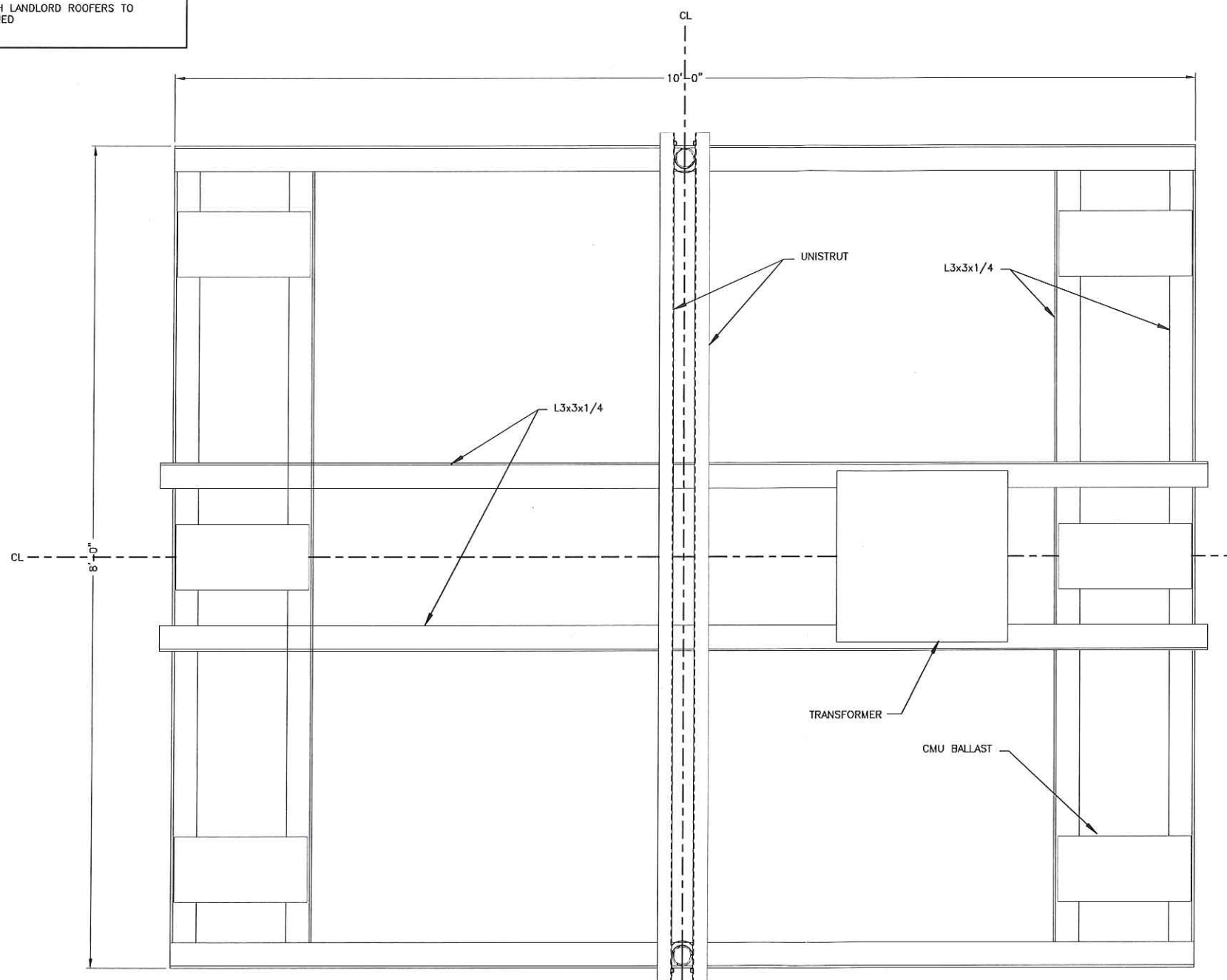
PRIOR TO BEGINNING CONSTRUCTION CONTRACTOR SHALL REFER TO STRUCTURAL ANALYSIS TITLED HARRISONBURG N005 COMPLETED BY DEWBERRY ENGINEERS INC. DATED, FEBRUARY 2, 2017

**8'x10' EQUIPMENT BALLAST
MOUNT PLAN VIEW**

SCALE: N.T.S.

NOTES:

1. IF FIELD CONDITIONS VARY CONTRACTOR SHALL NOTIFY ENGINEER OF RECORD IMMEDIATELY
2. CONTRACTOR SHALL COORDINATE WITH LANDLORD ROOFERS TO ENSURE ROOF WARRANTY IS MAINTAINED



**8'x10' EQUIPMENT BALLAST
MOUNT PLAN VIEW**

SCALE: N.T.S.

PROVIDE BALLAST AS INDICATED IN
THE STRUCTURAL ANALYSIS.

PRIOR TO BEGINNING CONSTRUCTION CONTRACTOR
SHALL REFER TO STRUCTURAL ANALYSIS TITLED
HARRISONBURG N001 COMPLETED BY DEWBERRY
ENGINEERS INC. DATED, FEBRUARY 2, 2017.

PRIOR TO BEGINNING CONSTRUCTION CONTRACTOR
SHALL REFER TO STRUCTURAL ANALYSIS TITLED
HARRISONBURG N004 COMPLETED BY DEWBERRY
ENGINEERS INC. DATED, FEBRUARY 1, 2016.

PRIOR TO BEGINNING CONSTRUCTION CONTRACTOR
SHALL REFER TO STRUCTURAL ANALYSIS TITLED
HARRISONBURG N005 COMPLETED BY DEWBERRY
ENGINEERS INC. DATED, FEBRUARY 2, 2017



VERIZON WIRELESS
1831 RADY COURT
RICHMOND, VA 23222

**HARRISONBURG
N001, N004, & N005**

CONSTRUCTION DRAWINGS

0	03/06/17	FOR CONSTRUCTION



Dewberry Engineers Inc.
4805 Lake Brook Drive, Suite 200
Glenn Allen, VA 23060
Phone: 804.290.7527
Fax: 804.290.7308
www.dewberry.com



DRAWN BY: MAF

REVIEWED BY: DRM

CHECKED BY: DRM

PROJECT NUMBER: 50075169

SITE ADDRESS:

865 PORT REPUBLIC ROAD
HARRISONBURG, VA 22801

SHEET TITLE

STRUCTURAL DETAILS

SHEET NUMBER

S-2