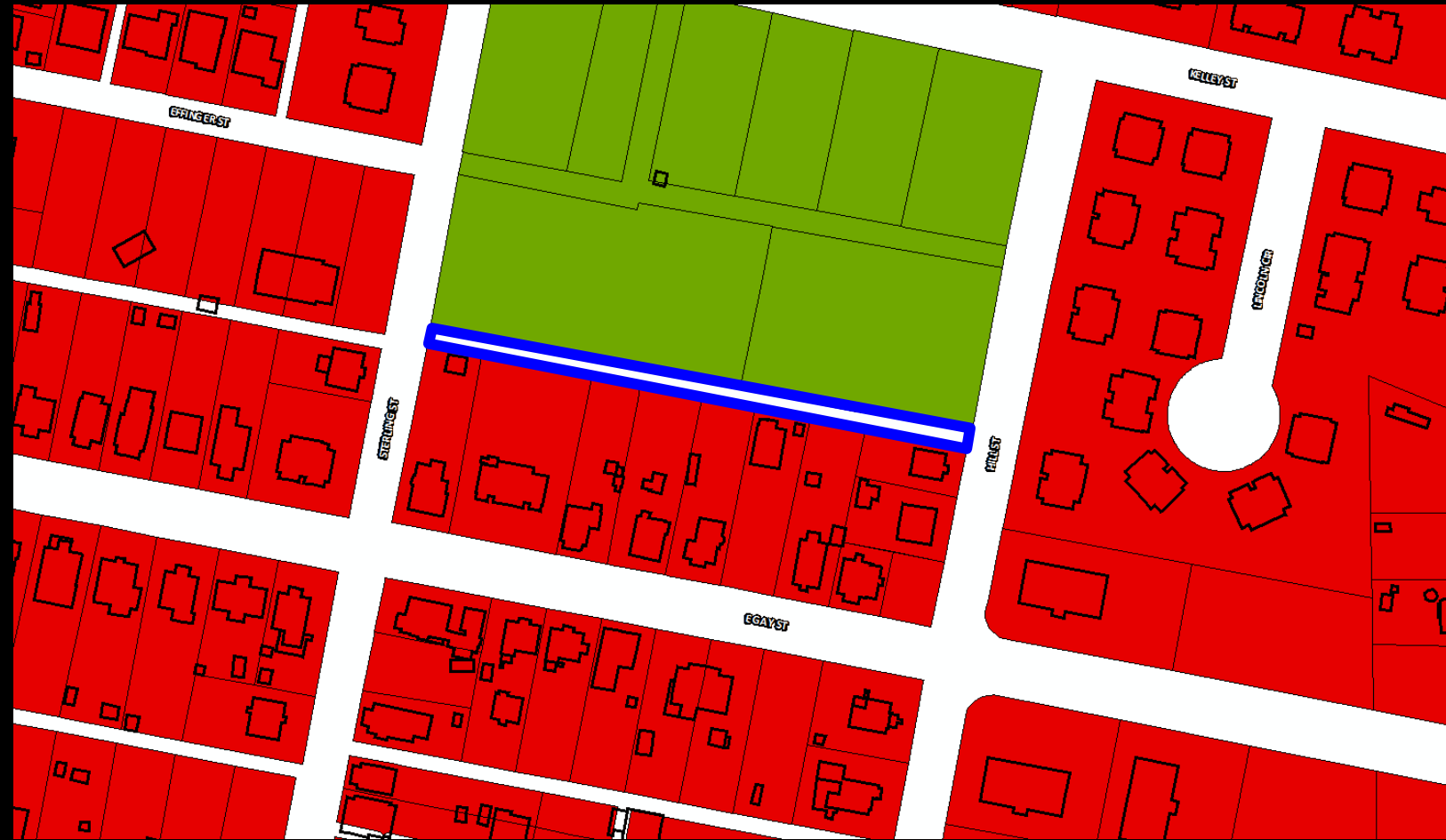


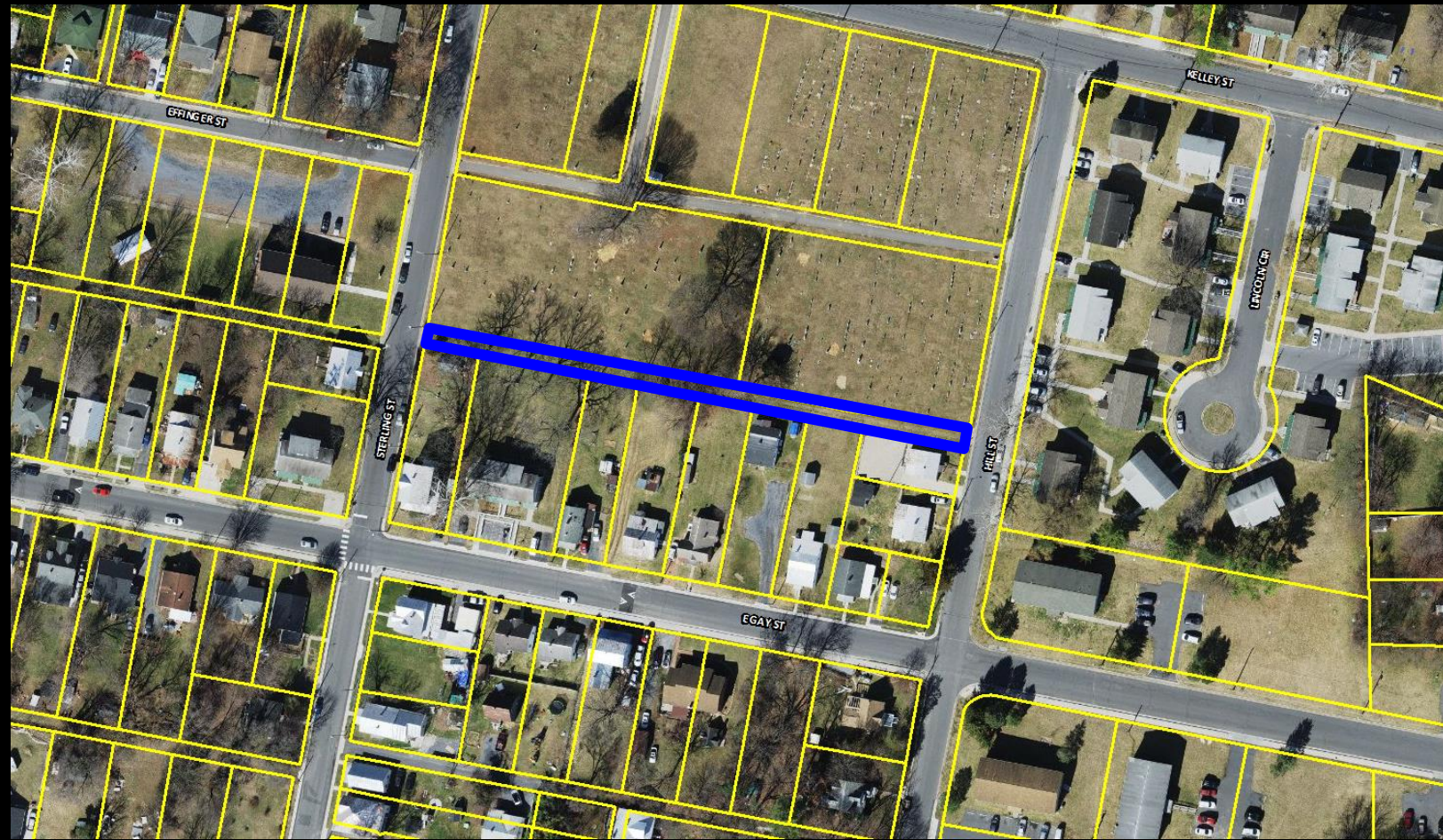
Alley Closing Adjacent to Newtown Cemetery



Alley Closing Adjacent to Newtown Cemetery



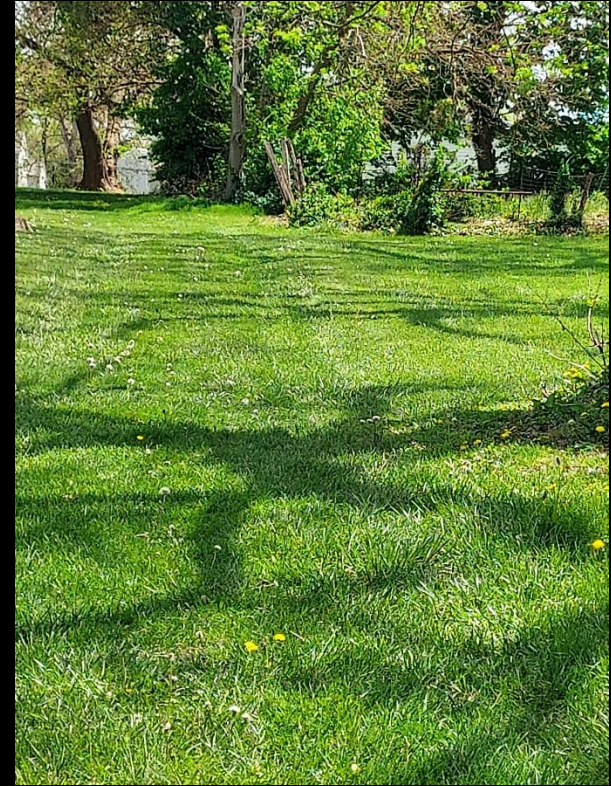
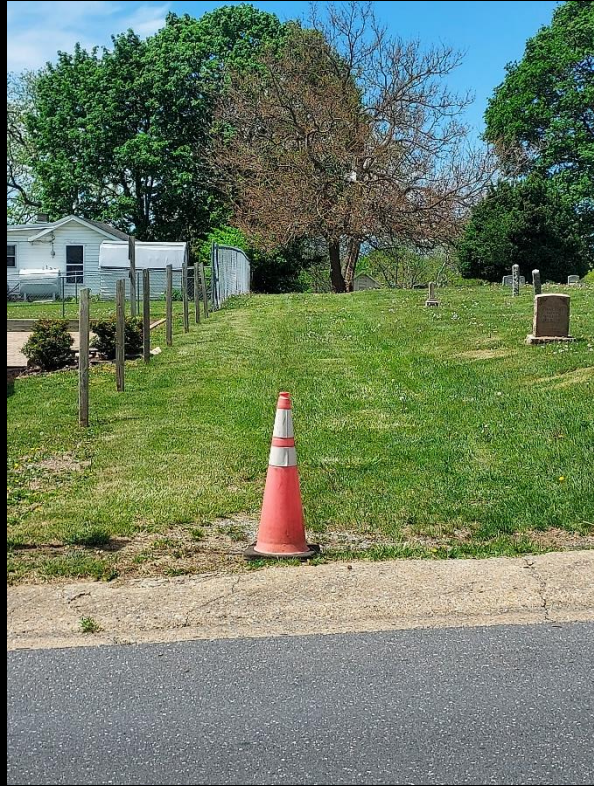
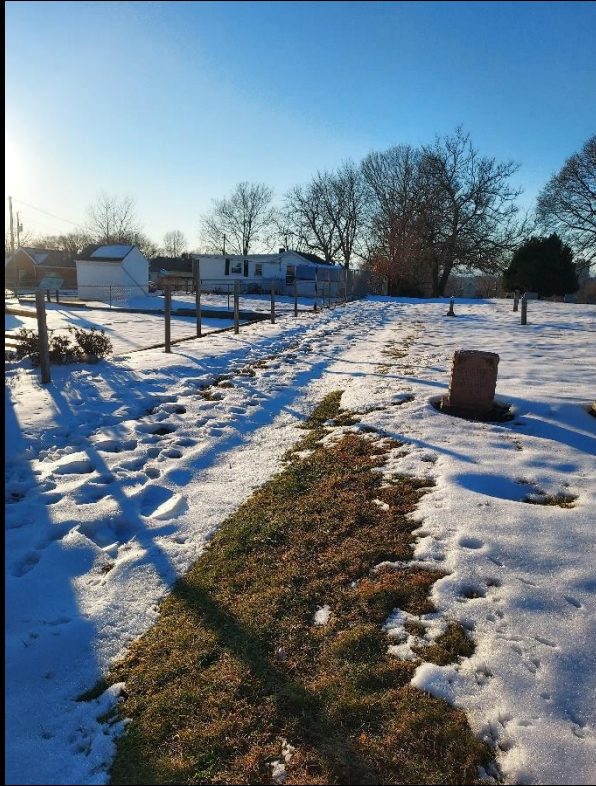
Alley Closing Adjacent to Newtown Cemetery



1. **Pre-1888:** Prior to March 5, 1888, Virginia did not have a subdivision ordinance. Any public rights-of-way recorded prior to this date are public easements or rights of passage. They follow the common law rule: In the absence of evidence to the contrary, the fee is presumed to be in the abutting landowners.¹
2. **Early Subdivision Act (1888 – 1928):** From March 5, 1888 until June 17, 1928, a subdivision created a public easement or right of passage, as before; however, the underlying fee remained in the dedicator of the subdivision, his heirs or assigns. Determining the present owner of the land for these paper streets and alleys could require extensive title searching.
3. **Post-1928 Subdivision Act:** Beginning June 17, 1928, recording a plat transferred, in fee simple, any portion of the land set aside for streets or other public use and created a public right of passage over that land. The City owns these paper streets and alleys.

¹ *Bond v. Green*, 189 Va. 23 (1949).

The Alley

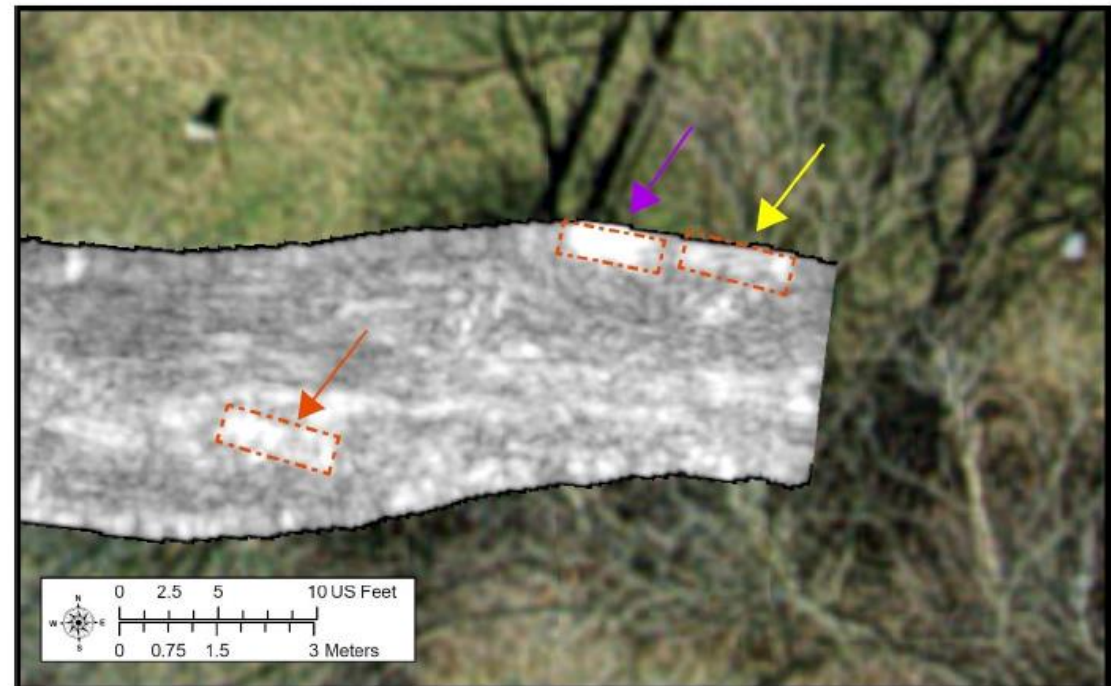
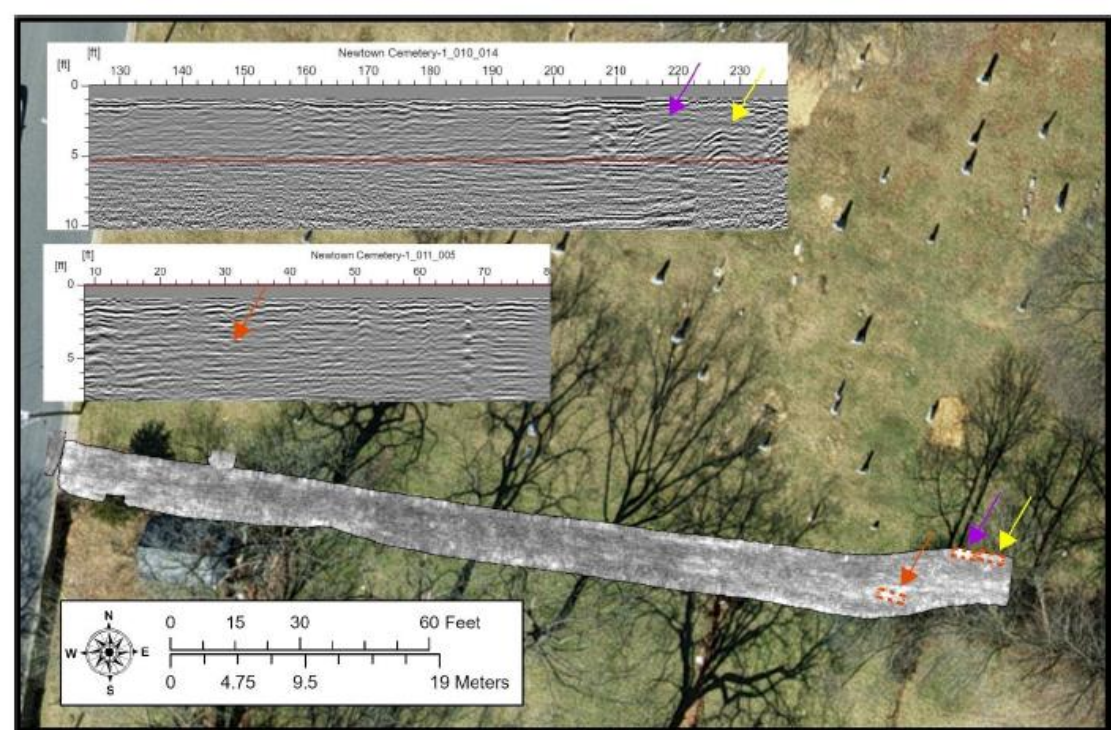


The Alley



- Preserve any existing unmarked graves.
- Expand Newtown Cemetery for burials.
- Expansion would require SUP.
- Applicant would have to secure title before applying for a SUP.

April 2025: Ground Penetrating Radar (GPR) identified 3 potential unmarked graves in or near the alley.





Map Numbers: 33-K-12, 13, 14, 15, 16, 17, 18 & 19

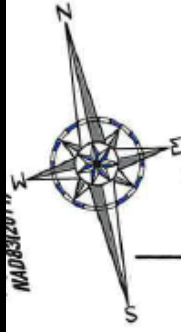
Present Owner: Newtown Cemetery

See Hastings Deed Book 1, Page 1 for Subdivision Plot of the Zirkle Addition.

See Deed Book 98, Page 420 for Subdivision Plot of the Hill-top Addition.

See Deed Book 3212, Page 580 for Ordinance closing alleys in Newtown Cemetery.

Scale: 1" = 80'



Effinger Street

Sterling Street
35' Public Right-of-Way

TM 33-(K)-1
Crissman
DB 4240 / 399

TM 33-(K)-3
Franklin Heights,
LLC
DB 3667 / 465

TM 33-(K)-4
Keeler
DB 1617 / 415

TM 33-(K)-5
Hite
DB 987 / 559

TM 33-(K)-6
Jennings

TM 33-(K)-7
Minnick
DB 1106 / 427

TM 33-(K)-8
Stroop
DB 2668 / 117

TM 33-(K)-11
Shenandoah Valley
Black Heritage
Project
DB 4904 / 115

N 10°59'22" E
150.00'

Lot 48
TM 33-(K)-14
DB 19 / 180
Zirkle Addition
Lot 49
TM 33-(K)-15
DB 19 / 180

TM 33-(K)-13
DB 61 / 236

N 78°14'56" E
291.45'

3.882 Acres
(Total)

S 12°01'53" W
150.00'

N 79°15'22" W

17' Alley

499.72' (total)

TM 33-(K)-12
DB 88 / 433

S 78°52'37" E
210.96'

N 11°59'33" E
152.28'

Hill Street
40' Public Right-of-Way

Kelley Street
33' Public Right-of-Way

S 77°17'42" E
150.07'

IPS

L2

IPS

L3

IPS

L4

IPS

L5

IPS

L6

IPS

L7

IPS

L8

IPS

L9

IPS

L10

IPS

L11

IPS

L12

IPS

L13

IPS

L14

IPS

L15

IPS

L16

IPS

L17

IPS

L18

IPS

L19

IPS

L20

IPS

L21

IPS

L22

IPS

L23

IPS

L24

IPS

L25

IPS

L26

IPS

L27

IPS

L28

IPS

L29

IPS

L30

IPS

L31

IPS

L32

IPS

L33

IPS

L34

IPS

L35

IPS

L36

IPS

L37

IPS

L38

IPS

L39

IPS

L40

IPS

L41

IPS

L42

IPS

L43

IPS

L44

IPS

L45

IPS

L46

IPS

L47

IPS

L48

IPS

L49

IPS

L50

IPS

L51

IPS

L52

IPS

L53

IPS

L54

IPS

L55

IPS

L56

IPS

L57

IPS

L58

IPS

L59

IPS

L60

IPS

L61

IPS

L62

IPS

L63

IPS

L64

IPS

L65

IPS

L66

IPS

L67

IPS

L68

IPS

L69

IPS

L70

IPS

L71

IPS

L72

IPS

L73

IPS

L74

IPS

L75

IPS

L76

IPS

L77

IPS

L78

IPS

L79

IPS

L80

IPS

L81

IPS

L82

IPS

L83

IPS

L84

IPS

L85

IPS

L86

IPS

L87

IPS

L88

IPS

L89

IPS

L90

IPS

L91

IPS

L92

IPS

L93

IPS

L94

IPS

L95

IPS

L96

IPS

L97

IPS

L98

IPS

L99

IPS

L100

IPS

L101

IPS

L102

IPS

L103

IPS

L104

IPS

L105

IPS

L106

IPS

L107

IPS

L108

IPS

L109

IPS

L110

IPS

L111

IPS

L112

IPS

L113

IPS

L114

IPS

L115

IPS

L116

IPS

L117

IPS

L118

IPS

L119

IPS

L120

IPS

L121

IPS

L122

IPS

L123

IPS

L124

IPS

L125

IPS

L126

IPS

L127

IPS

L128

IPS

L129

IPS

L130

IPS

L131

IPS

Recommendation

Staff recommended denial of the request. However, this does not mean the status quo of the use of the alley should be maintained.

Option #1: Approve as requested by the applicant.

Option #2: Approve the request with a 5-foot in width access easement while respecting potential identified burials.

Option #3: Deny the request with provisions to protect potential identified burials and public access through the alley.

Option #4: Table the request to allow for further research while providing temporary protections of potential identified burials.

Planning Commission (4-2) recommends approval of the alley closing request.

