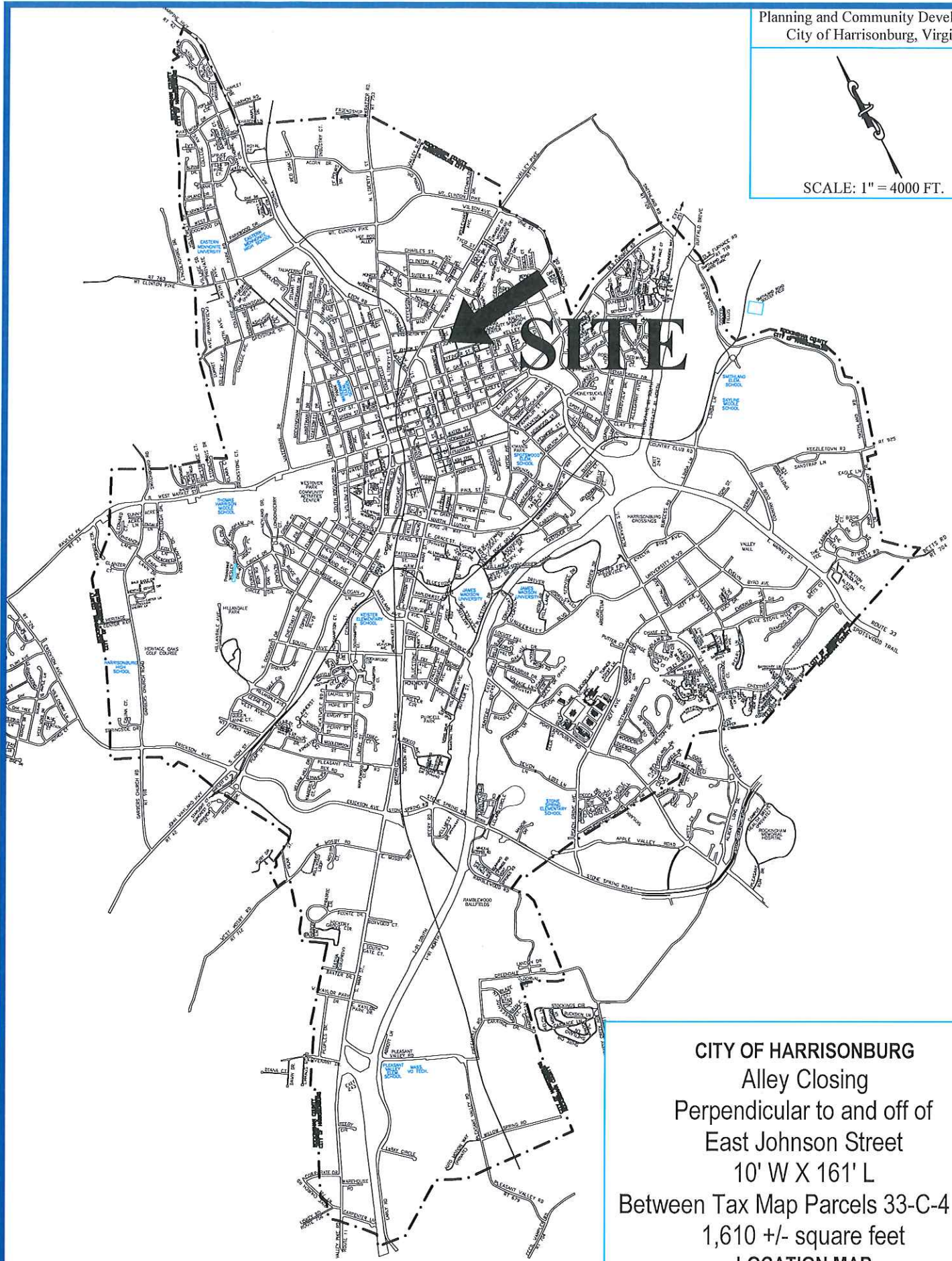
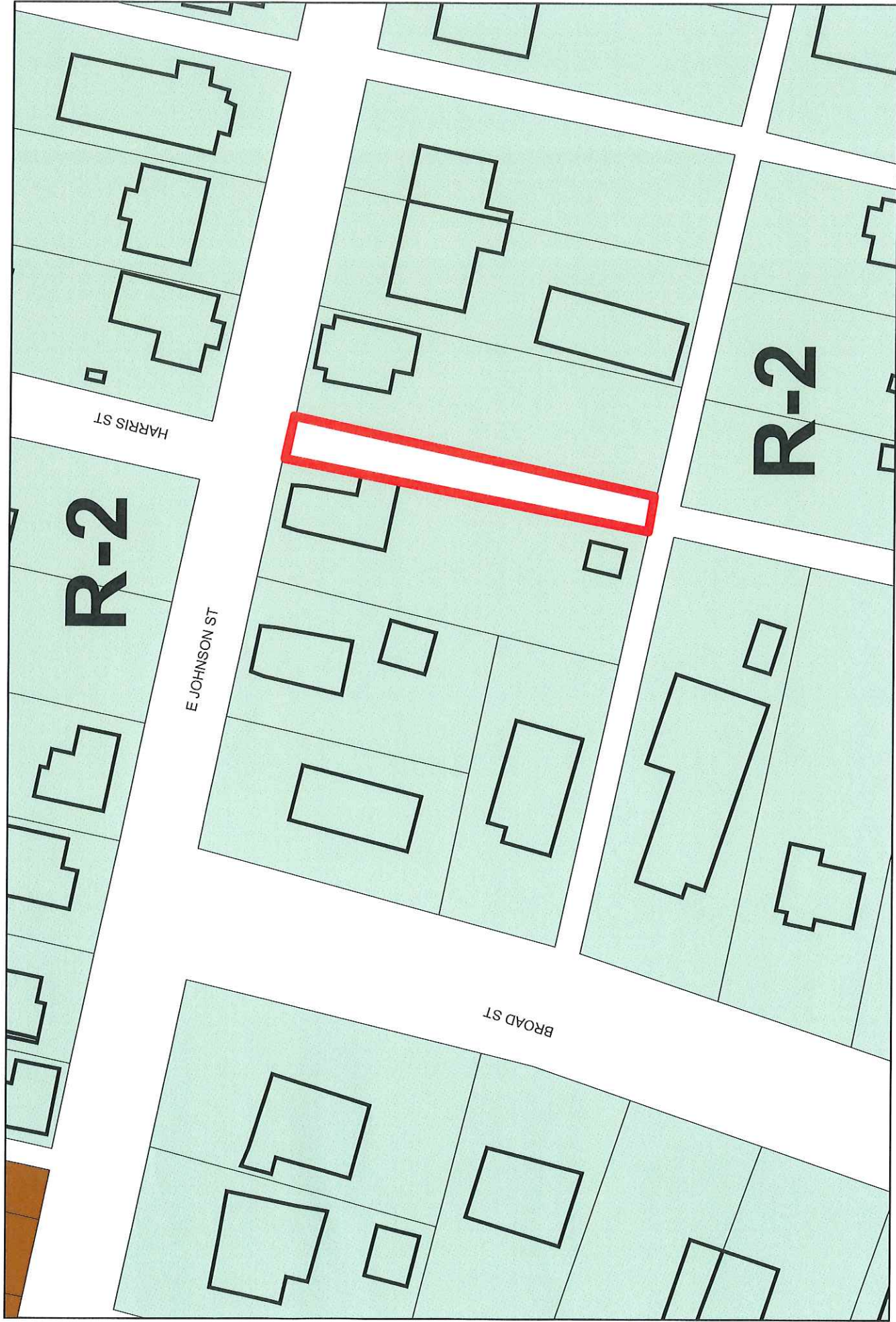




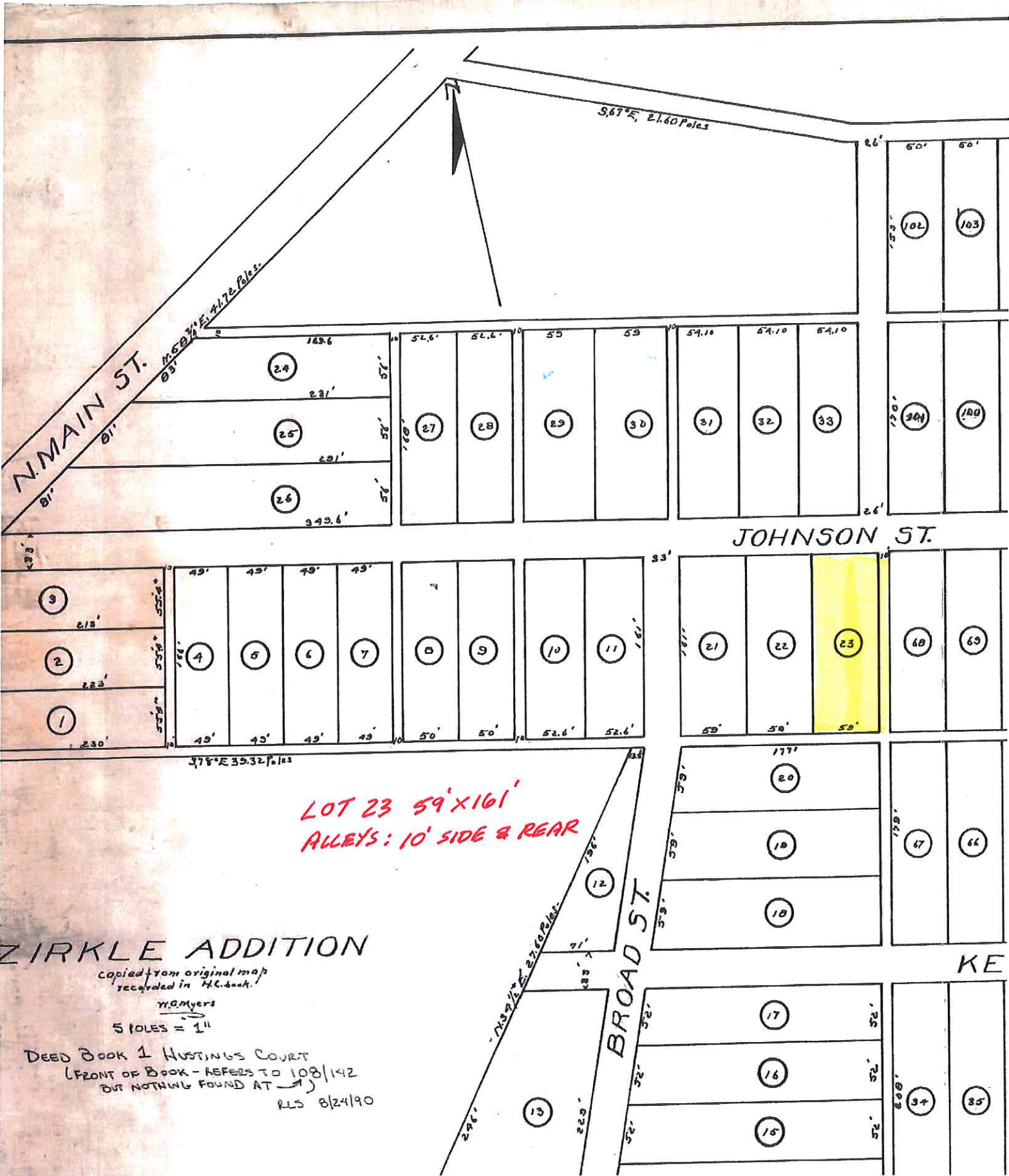
SCALE: 1" = 4000 FT.



CITY OF HARRISONBURG
Alley Closing
Perpendicular to and off of
East Johnson Street
10' W X 161' L
Between Tax Map Parcels 33-C-4 & 5
1,610 +/- square feet
LOCATION MAP



**Alley Closing - Perpendicular to and off of E Johnson St
Between Tax Map Parcels 33-C-4 & 5**



N MAIN ST.
 1150 3/4 E 41.72 Poles
 83' 01'

S 67° E, 21.60 Poles

JOHNSON ST.

LOT 23 59' X 161'
 ALLEYS: 10' SIDE & REAR

ZIRKLE ADDITION

copied from original map
 recorded in H.L. book.

W.A. Myers
 5 POLES = 1"

DEED BOOK 1 HUSTINGS COURT
 (FRONT OF BOOK - REFERS TO 108/142
 BUT NOTHING FOUND AT →)
 RLS 8/24/90

BROAD ST.

KE



HARRIS ST

E JOHNSON ST

BROAD ST