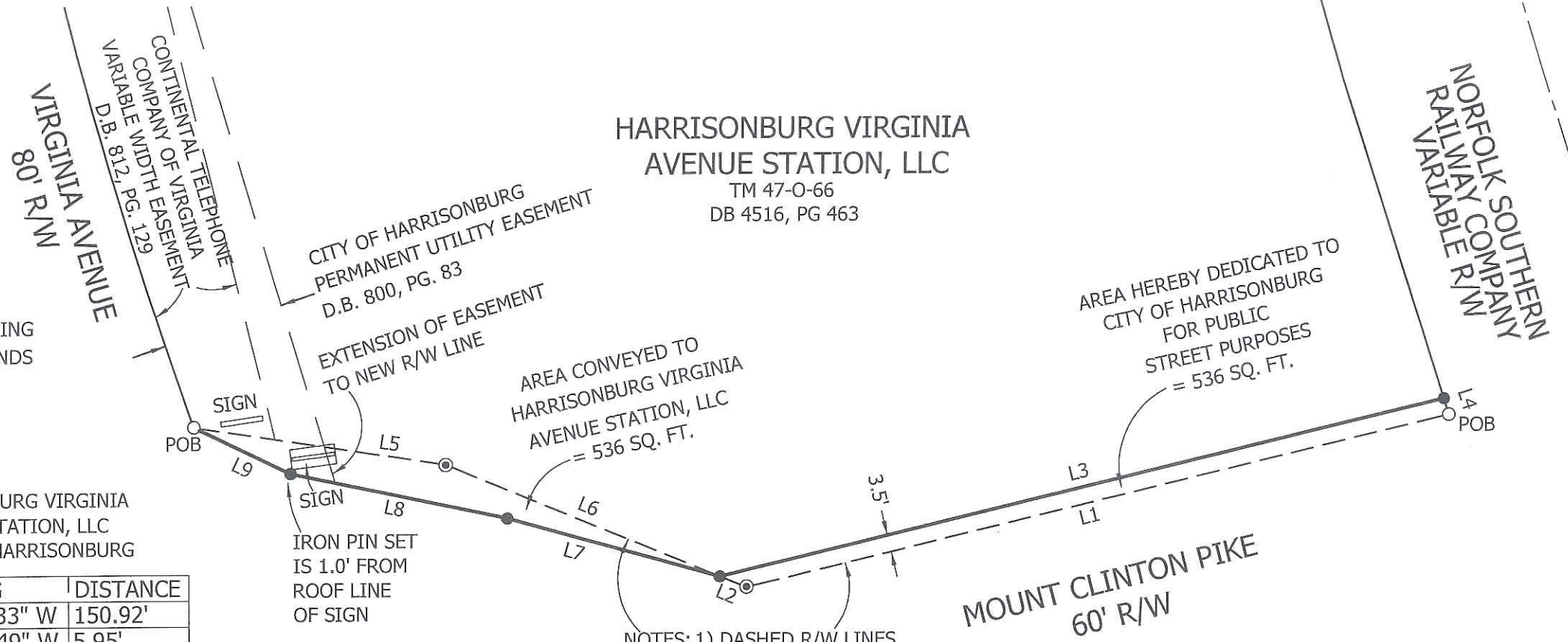




- = IRON PIN FOUND
- ⊙ = NAIL FOUND
- = IRON PIN SET

POB = POINT OF BEGINNING OF METES AND BOUNDS DESCRIPTION



HARRISONBURG VIRGINIA AVENUE STATION, LLC TO CITY OF HARRISONBURG

LINE	BEARING	DISTANCE
L1	S 76°27'33" W	150.92'
L2	N 67°30'49" W	5.95'
L3	N 76°27'33" E	155.46'
L4	S 17°56'35" E	3.51'

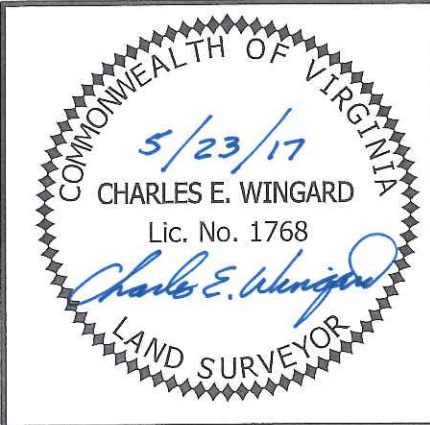
CITY OF HARRISONBURG TO HARRISONBURG VIRGINIA AVENUE STATION, LLC

LINE	BEARING	DISTANCE
L5	S 81°08'28" E	53.07'
L6	S 67°30'49" E	62.06'
L7	N 74°19'08" W	46.17'
L8	N 77°57'21" W	46.17'
L9	N 64°06'11" W	22.43'

HARRISONBURG VIRGINIA AVENUE STATION, LLC
 TM 47-O-66
 DB 4516, PG 463


NOTES: 1) DASHED R/W LINES ARE HEREBY VACATED

2) IRON PINS WILL BE SET UPON COMPLETION OF NEW SITE CONSTRUCTION



MINOR SUBDIVISION
 LAND EXCHANGES BETWEEN HARRISONBURG VIRGINIA AVENUE STATION, LLC AND CITY OF HARRISONBURG
 CITY OF HARRISONBURG, VA

SCALE: 1" = 30'
 DRAWN BY: JRS
 DATE: MAY 23 2017
 SHEET: 47, BLOCK: 0, LOT: 66
 DIVISION OF ENGINEERING
 CITY OF HARRISONBURG
 409 SOUTH MAIN STREET

VIRGINIA AVENUE EXXON
 PROJECT # 1710

 Department of Planning and Community Development