

**ORDINANCE VACATING CERTAIN STORM WATER/STORM SEWER EASEMENTS
BETWEEN PARK ROAD AND VIRGINIA AVENUE LOCATED IN THE CITY OF
HARRISONBURG**

BE IT ORDAINED BY THE COUNCIL OF THE CITY OF HARRISONBURG, VIRGINIA:

That certain storm water/storm sewer easements between Park Road and Virginia Avenue, located in the CITY OF HARRISONBURG, to be indexed as Grantor, and designated as Easement 1 through Easement 5, all conveyed to the City in a document recorded in the Clerk's Office of the Circuit Court of Rockingham County, Virginia in Deed Book 806, page 486, and a storm sewer easement described as a "City Storm Sewer Easement Described in DB 769/4", on a plat prepared by Hal T. Benner, Land Surveyor, dated July 13, 2021, entitled "PLAT SHOWING THE CONVERSION OF PUBLIC STORM WATER EASEMENTS AND DRAINAGE EASEMENTS TO PRIVATE STORM WATER EASEMENTS AND DRAINAGE EASEMENTS," which plat is attached to this Ordinance, be vacated.

That upon passage of this ordinance, the title to the easements described above as vacated shall be vested in PARK VILLAGE, INC., owner of the parcel in which the easements lay, to be indexed as Grantee. The easements to be vacated are shown on Harrisonburg Tax Map Number 52-D-4.

This ordinance shall be effective from the date of its passage.

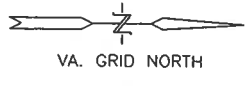
ADOPTED and APPROVED this 24 day of August, 2021.

Deanna R. Reed
MAYOR

ATTESTE:
Camela Utner
Clerk of the Council

PLAT SHOWING THE CONVERSION OF PUBLIC STORM WATER EASEMENTS AND DRAINAGE EASEMENTS TO PRIVATE STORM WATER EASEMENTS AND DRAINAGE EASEMENTS

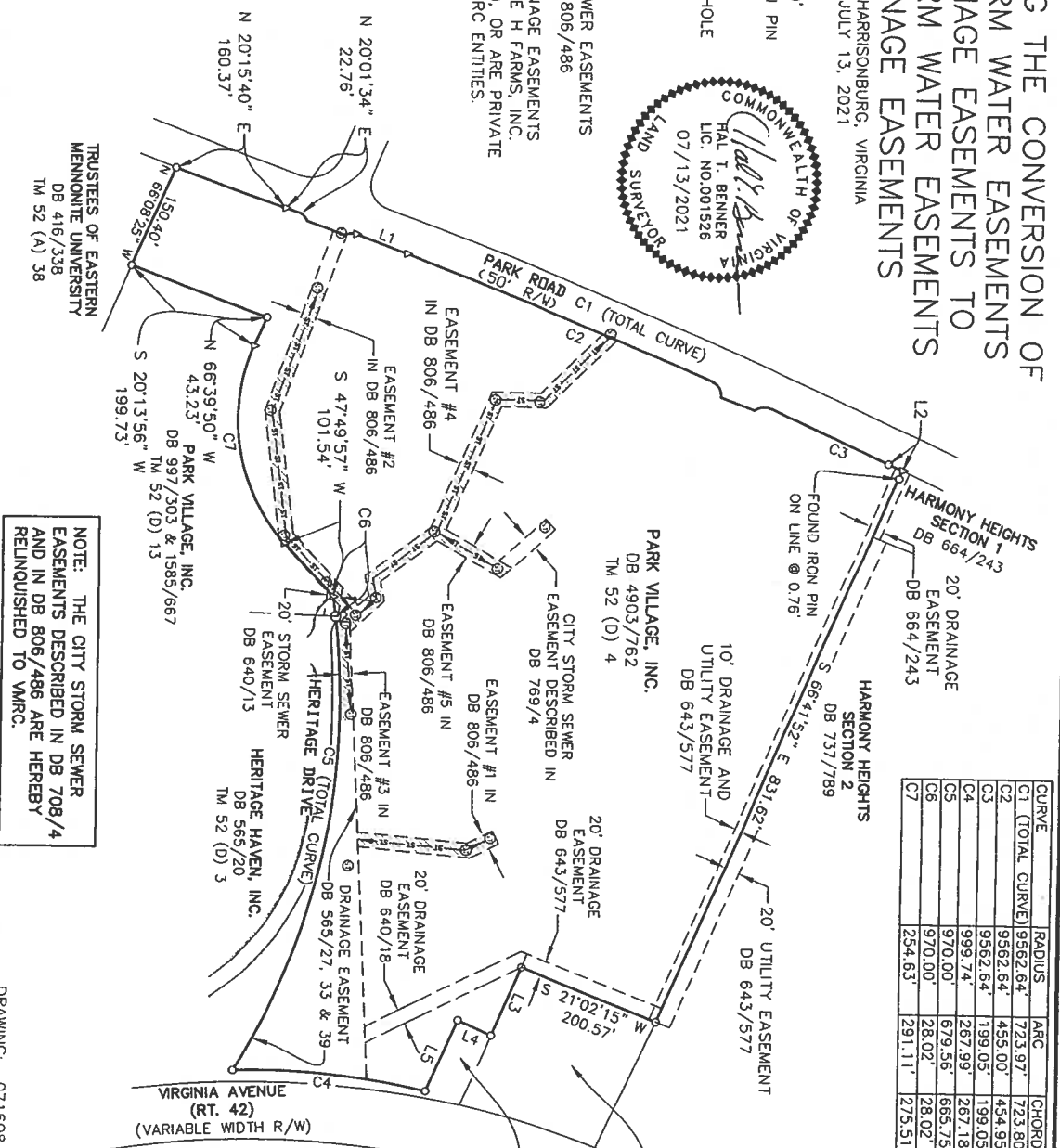
CITY OF HARRISONBURG, VIRGINIA
JULY 13, 2021



SCALE: 1"=150'
 ○ = FOUND IRON PIN
 ○ = FOUND PIPE
 △ = POINT
 ⊗ = STORM MANHOLE



☒ = CITY STORM SEWER EASEMENTS DESCRIBED IN DB 806/486
 ALL OTHER STORM DRAINAGE EASEMENTS ARE RESERVED BY TRIPLE H FARMS, INC. (FOR HARMONY HEIGHTS), OR ARE PRIVATE EASEMENTS BETWEEN VMRC ENTITIES.



CURVE	RADIUS	ARC	CHORD	CHORD BRG.	DELTA ANGLE
C1 (TOTAL CURVE)	9562.64'	723.97'	723.80'	N 22°30'33" E	04°20'16"
C2	9562.64'	455.00'	454.95'	N 22°02'12" E	02°43'34"
C3	9562.64'	199.05'	199.05'	N 24°24'54" E	01°11'34"
C4	999.74'	267.99'	267.18'	S 05°30'55" W	15°21'31"
C5	970.00'	679.56'	665.75'	N 78°54'34" W	40°08'25"
C6	970.00'	28.02'	28.02'	S 81°50'53" W	01°39'19"
C7	254.63'	291.11'	275.51'	S 80°35'04" W	65°30'13"

LINE	BEARING	DISTANCE
L1	N 20°40'25" E	75.90'
L2	N 25°00'41" E	20.58'
L3	S 66°38'06" E	101.68'
L4	S 23°20'13" W	50.00'
L5	S 66°39'47" E	107.74'

TRUSTEES OF EASTERN Mennonite University
DB 416/338
TM 52 (A) 38

NOTE: THE CITY STORM SEWER EASEMENTS DESCRIBED IN DB 708/4 AND IN DB 806/486 ARE HEREBY RELINQUISHED TO VMRC.

BENNER & ASSOC., INC.
8 PLEASANT HILL ROAD
HARRISONBURG, VA 22801
540 434-0267
REF# 071608
DRAWING: 071608-VMRC 2017 LOT VACATION.dwg
CRD: 071608