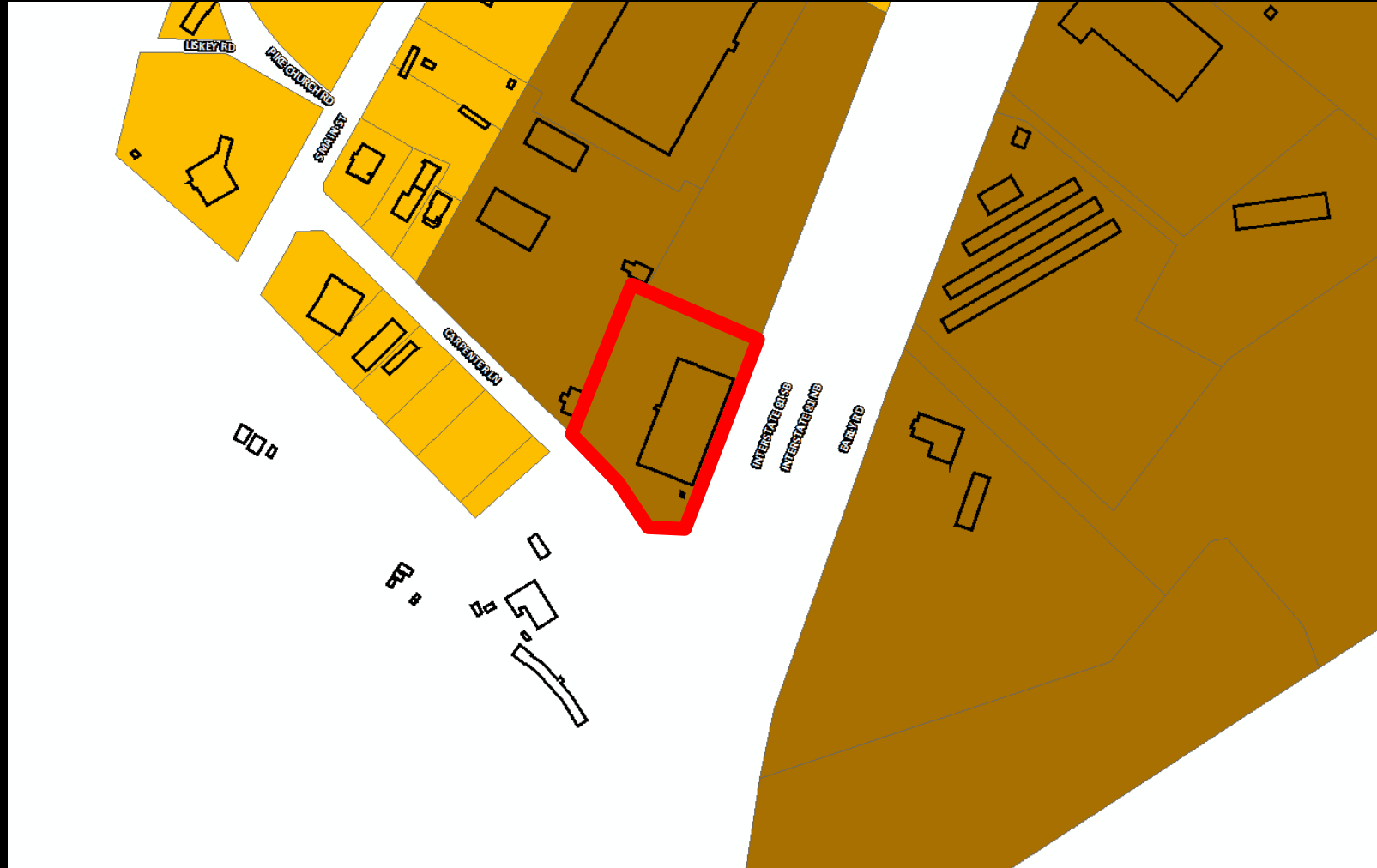
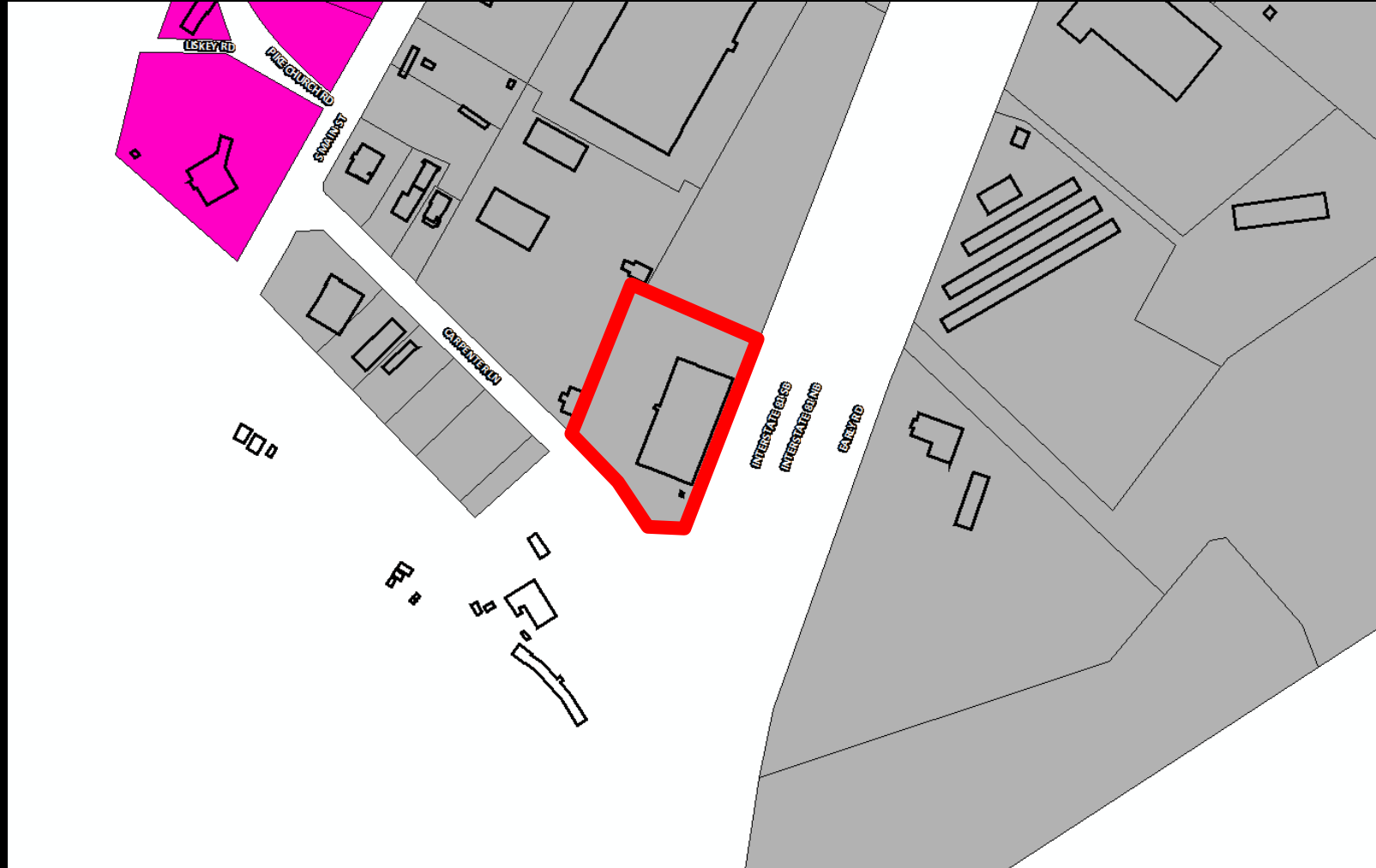


Special Use Permit – 160 Carpenter Lane (Reduced Parking in M-1)



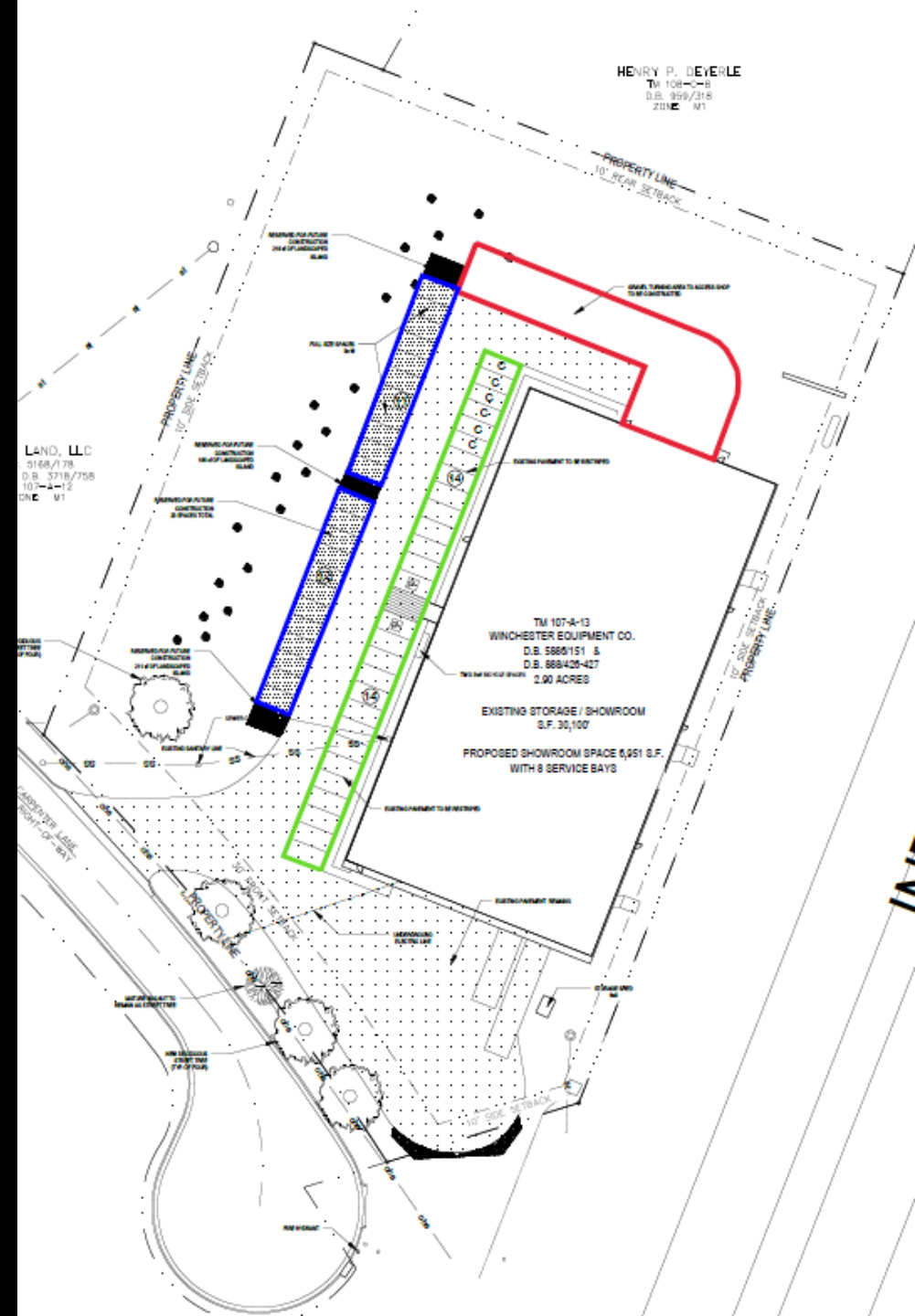
Special Use Permit – 160 Carpenter Lane (Reduced Parking in M-1)



Special Use Permit – 160 Carpenter Lane (Reduced Parking in M-1)



- Reduce parking from 51 spaces to 28 spaces.
- Open space is reserved for future parking spaces and associated landscaping.
- The parking lot will be expanded, which requires trees along the frontage.



Recommended SUP Condition

Trees shall be planted and maintained within the landscape borders adjacent to the public street right-of-way in accordance with Section 10-3-30.1(4) of the Zoning Ordinance.

—The applicant and staff will work together to verify the number of trees to be planted.

Recommendation

Staff and Planning Commission (6-0) recommends approval with the following condition:

- Trees shall be planted and maintained within the landscape borders adjacent to the public street right-of-way in accordance with Section 10-3-30.1(4) of the Zoning Ordinance.