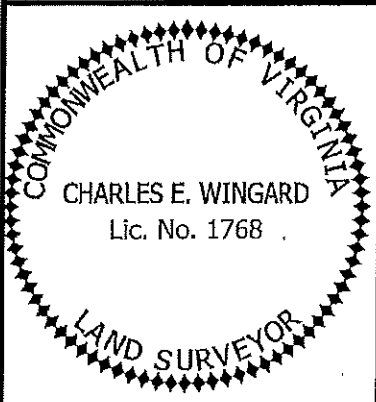


NOTES:

- 1.) THE 692 SQ. FT. PARCEL IS A PORTION OF PARCEL #4 CONVEYED TO THE CITY OF HARRISONBURG BY ROY LEE RITCHIE AND ALAN B. RITCHIE BY DEED OF CORRECTION RECORDED IN D.B. 3331, PG. 690
- 2.) THE 2,385 SQ. FT. PARCEL LIES WITHIN THE OLD PRESCRIPTIVE R/W LIMITS OF PEAR STREET.

SEE SHEET 2 OF 2 FOR EASEMENT DATA AND FOR LINE AND CURVE TABLES.

BOUNDARY SHEET
SHEET 1 OF 2



MINOR SUBDIVISION
PLAT SHOWING A
3,077 SQ. FT.
ADDITION TO
FUTURE LOT 40
SKYVIEW ESTATES
PHASE I

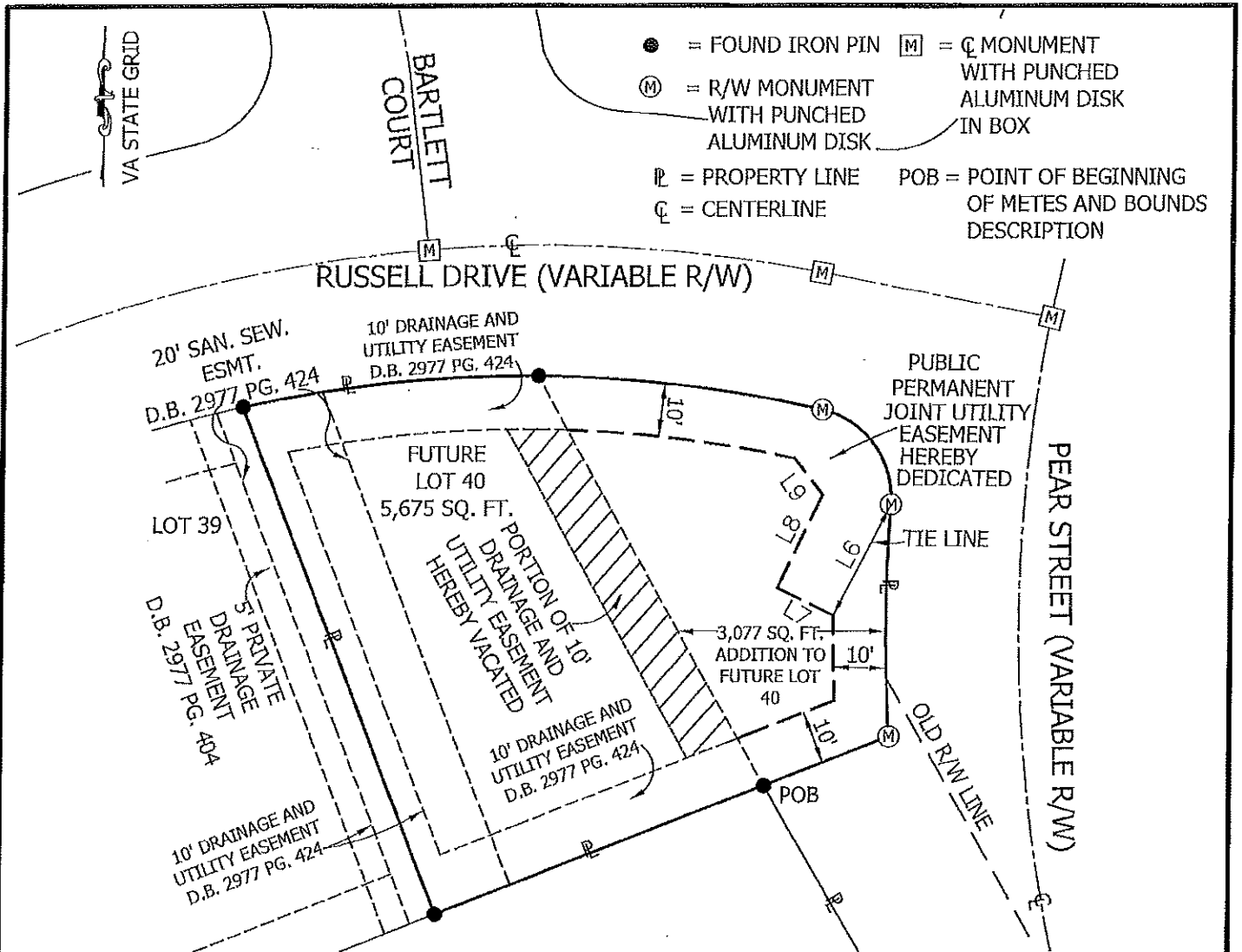
CITY OF HARRISONBURG, VA

SCALE: 1" = 30'		
DRAWN BY		DATE
JRS		MARCH 21 2016
SHEET	BLOCK	LOT
112	D	40

DIVISION OF ENGINEERING
CITY OF HARRISONBURG
409 SOUTH MAIN STREET
HARRISONBURG, VA 22801

PEAR ST./
RUSSELL DRIVE
PROJECT #
0736

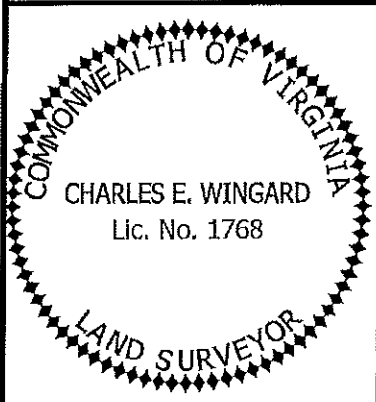




CURVE	DELTA ANGLE	RADIUS	ARC LENGTH	CHORD BEARING	CHORD LENGTH
C1	8°17'59"	250.02'	36.22'	S 85°18'49" E	36.19'
C2	1°55'53"	325.00'	10.96'	S 02°47'22" E	10.96'
C3	80°57'23"	17.00'	24.02'	S 36°35'05" E	22.07'
C4	5°43'01"	325.00'	32.43'	S 01°02'06" W	32.41'
C5	4°06'03"	250.02'	17.89'	S 79°06'48" E	17.89'
C6	12°48'24"	250.02'	55.88'	N 84°07'59" E	55.77'

LINE	BEARING	DISTANCE	L5	N 21°18'17" W	101.90'
L1	N 29°23'35" W	87.93'	L6	S 27°24'46" W	23.34'
L2	S 29°23'20" E	61.41'	L7	N 64°19'08" W	11.74'
L3	S 68°41'43" W	25.31'	L8	N 25°40'52" E	19.39'
L4	S 68°41'43" W	66.13'	L9	N 38°03'32" W	8.59'

SEE SHEET 1 OF 2
FOR BOUNDARY DATA
EASEMENT SHEET
SHEET 2 OF 2



MINOR SUBDIVISION
PLAT SHOWING A
3,077 SQ. FT.
ADDITION TO
FUTURE LOT 40
SKYVIEW ESTATES
PHASE I
CITY OF HARRISONBURG, VA

SCALE: 1" = 30'
DRAWN BY: JRS DATE: MARCH 21, 2016
SHEET: 112 BLOCK: D LOT: 40
DIVISION OF ENGINEERING
CITY OF HARRISONBURG
409 SOUTH MAIN STREET
HARRISONBURG, VA 22801

PEAR ST./
RUSSELL DRIVE
PROJECT #
0736