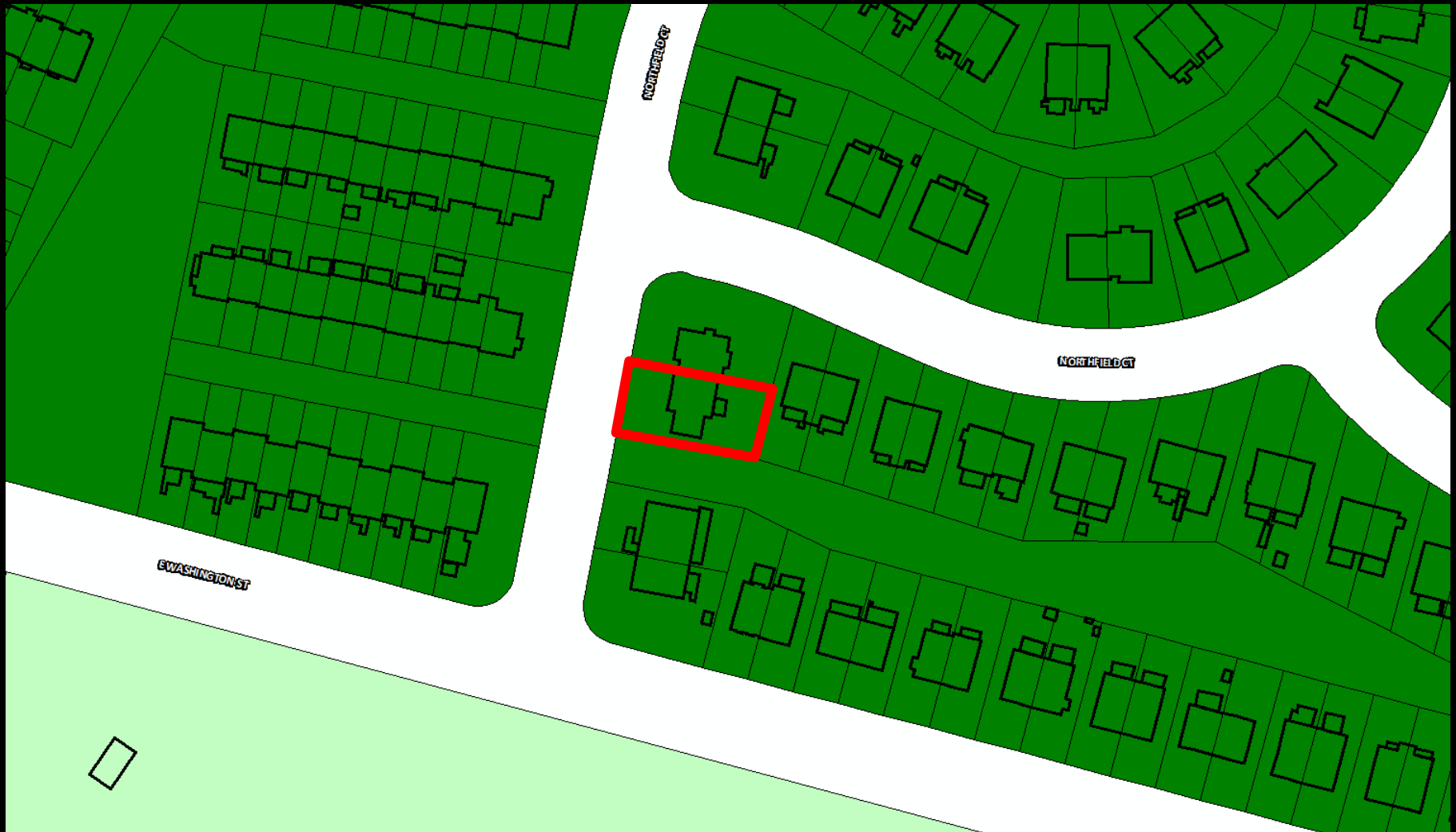


Rezoning – 708 Northfield Court

R-4 to R-8C



Rezoning – 708 Northfield Court

R-4 to R-8C



Rezoning – 708 Northfield Court

R-4 to R-8C





REZONING
540-432-7700





712

708

2022 – garage demolished, and addition constructed

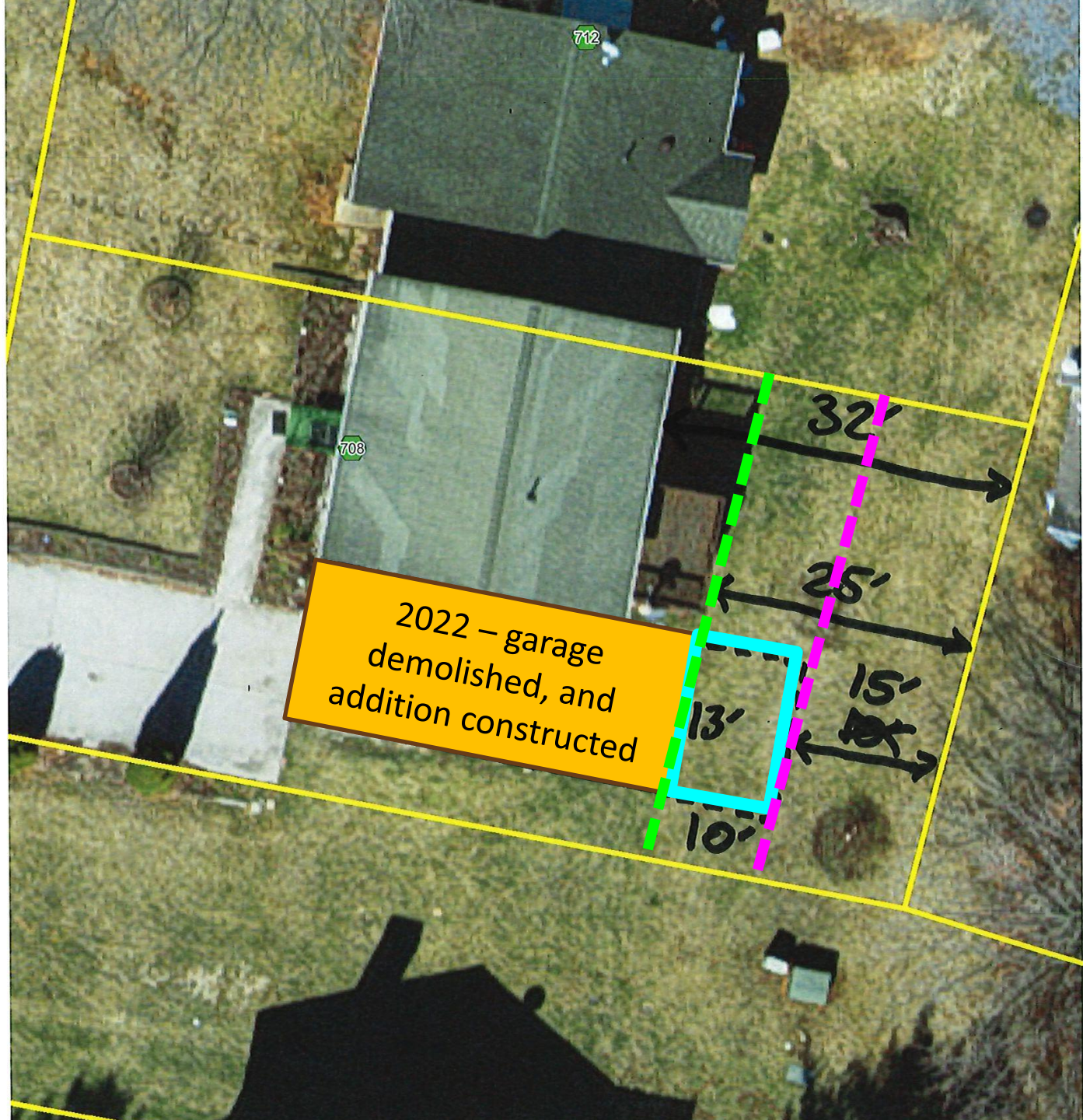
32'

25'

15'

13'

10'



Proffers

1. More than one dwelling prohibited.
2. The minimum front yard setback along Northfield Court shall be 30 feet.

Recommendation

Staff and Planning Commission (7-0)
recommends approval of the rezoning.

