



To Whom it may concern,

As the General Manager and Co-Owner of Steven Toyota we are aware of Bridgewater Montessori's intent to purchase 15 South Gate Court and relocate their program to that facility. In discussions with the owner, Daniella Jahne, we have offered her staff and visitors the ability to utilize parking in our lot directly across from 15 South Gate Court.

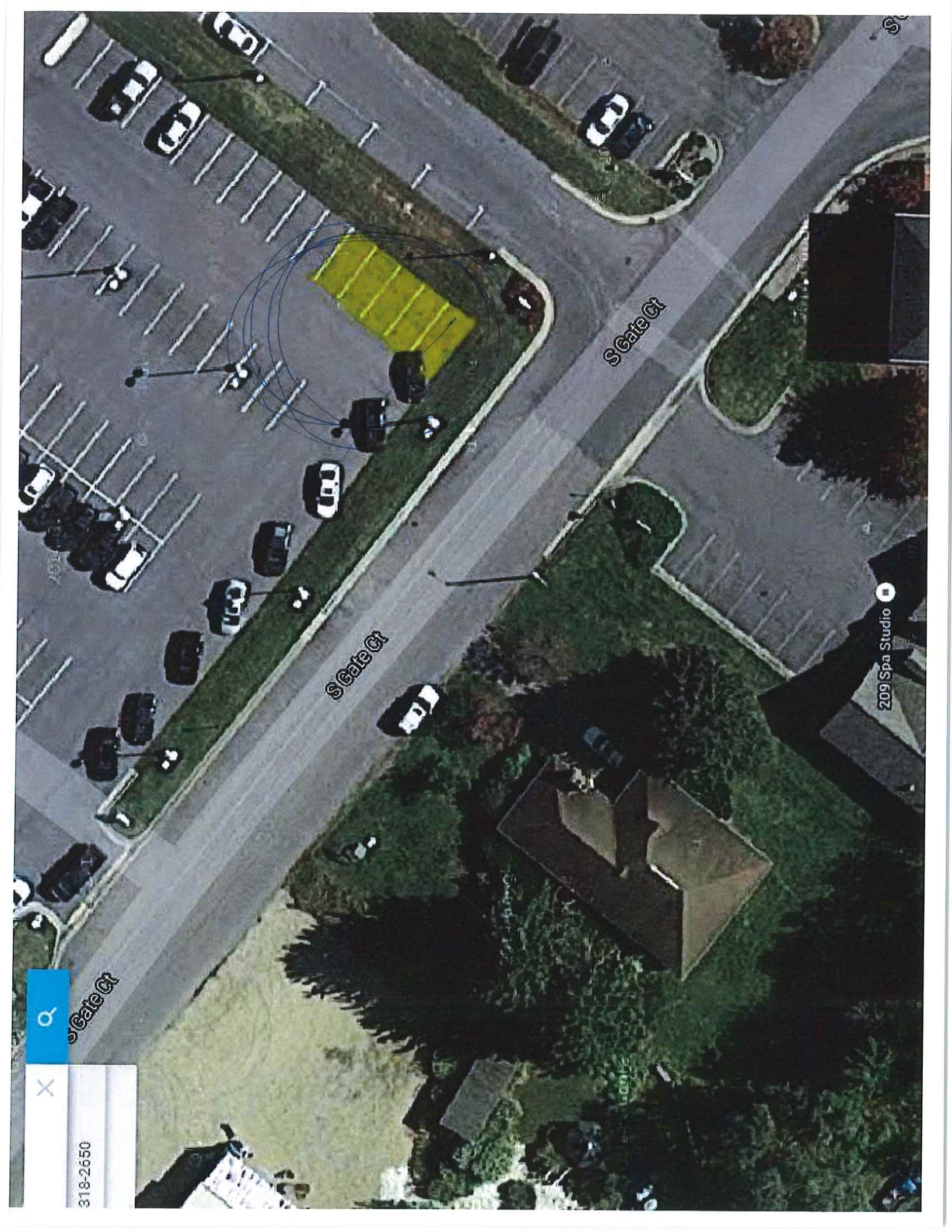
The parking area will consist of 5 parking spaces, as highlighted in the attached aerial photo. It is our understanding that the school staff will utilize these spaces first, leaving open their proposed on-site parking for families and visitors. We have also offered our back parking lot for when the school has large events and need additional parking.

We are looking forward to the addition of this business in our neighborhood and adding a new Montessori to Harrisonburg. Thank you for your consideration in their special use request.

Thank you,

A handwritten signature in black ink, appearing to read "Ryan Sodikoff", written over a circular scribble.

Ryan Sodikoff
General Manager/ Co-Owner
Steven Toyota
rsodikoff@steventoyota.com



S Gate Ct

S Gate Ct

209 Spa Studio

S Gate Ct

318-2650