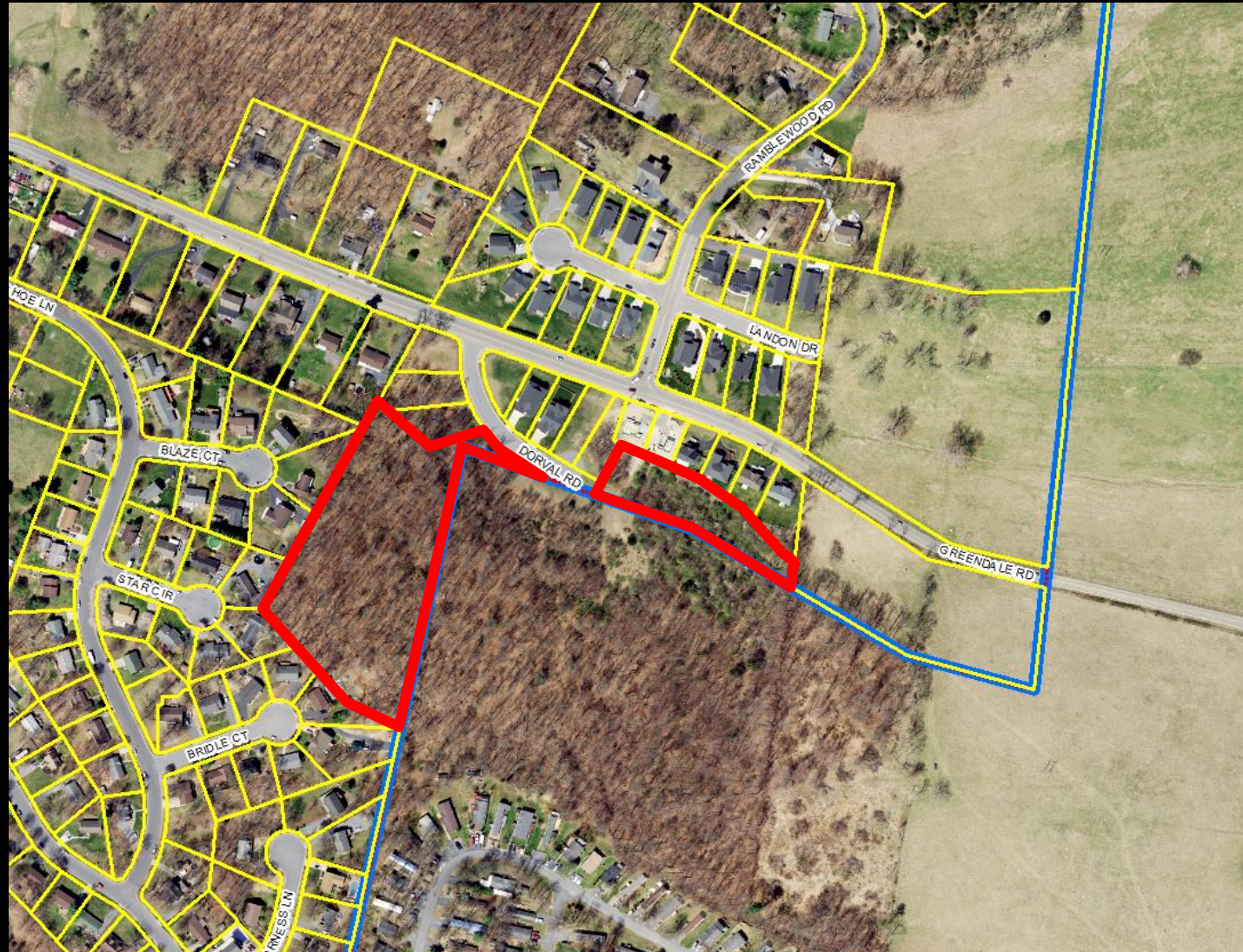
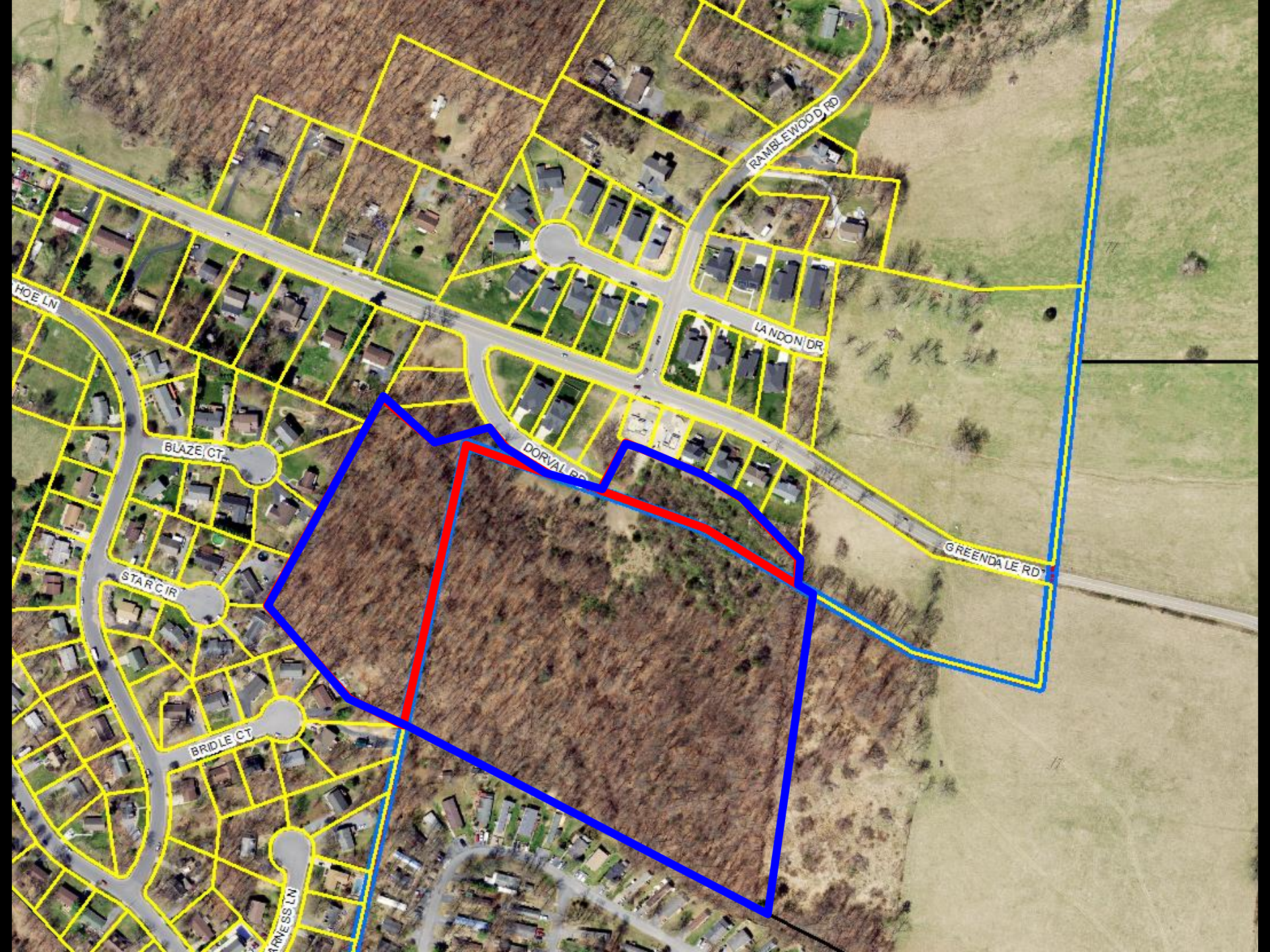


Preliminary Plat – Variance Request

The Crossings, Section 2 (Dorval Rd Ext.)





HOE LN

BLAZE CT

STAR CIR

BRIDLE CT

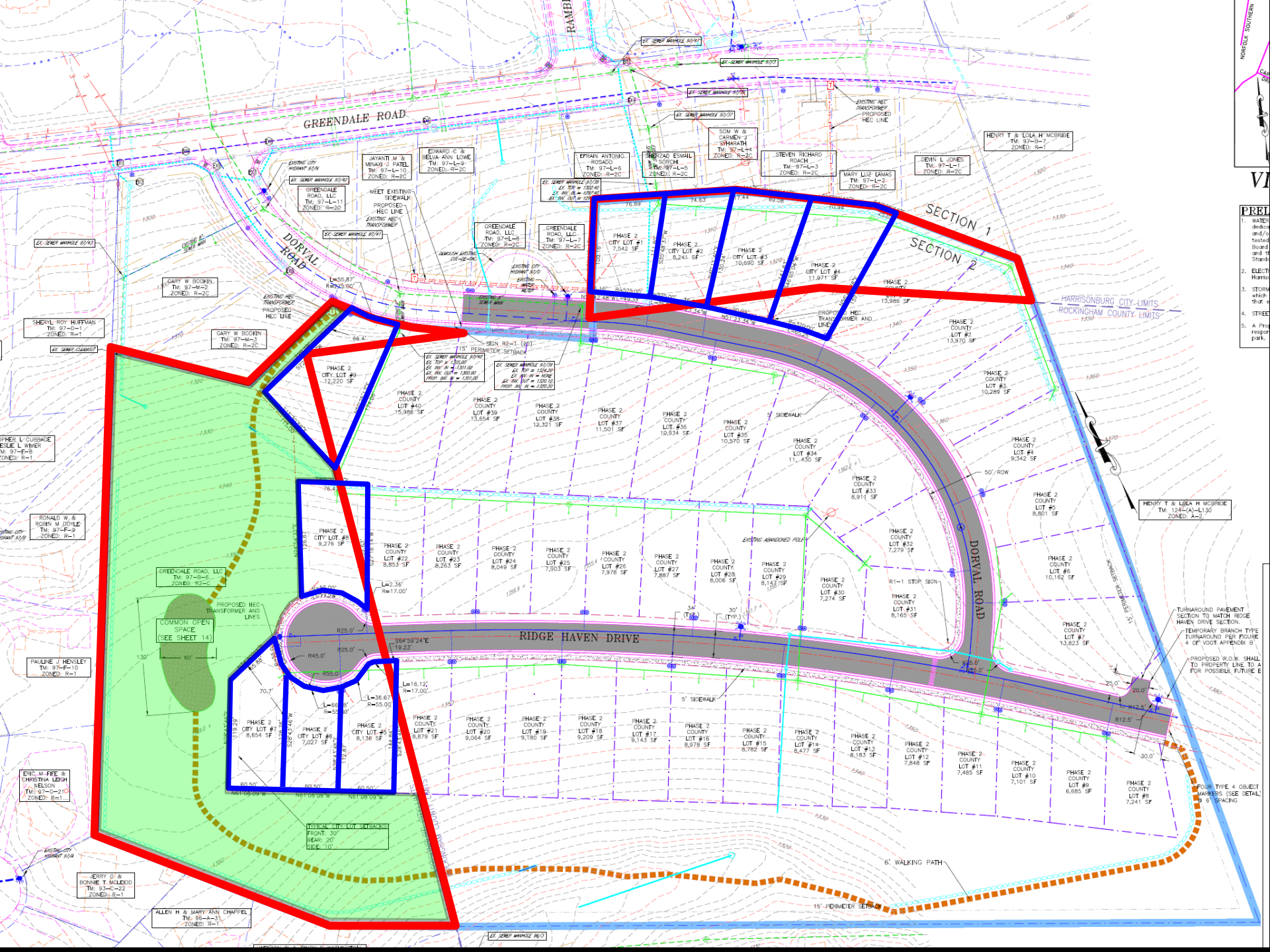
AMVESS LN

RAMBLEWOOD RD

LONDON DR

DORVAL RD

GREENDALE RD



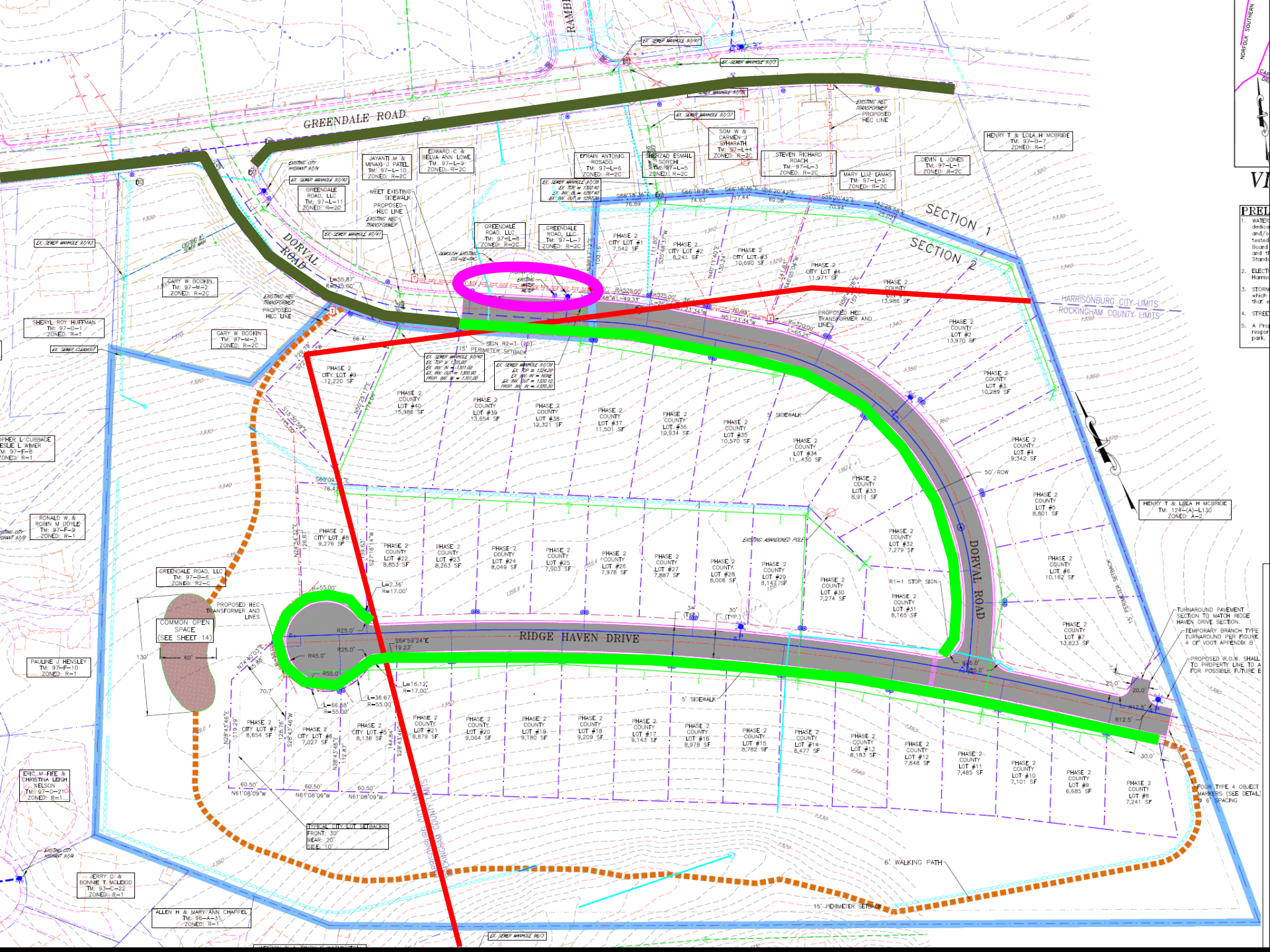
- PREL**
1. WATER
 2. ELECTRIC
 3. STORM
 4. STREET
 5. A. Prop

TURNOVER PAVEMENT SECTION TO MATCH RIDGE HAVEN DRIVE SECTION.

TEMPORARY BRANCH TYPE TURNOVER PER FIGURE 4 OF YOUR APPROVED 50'.

PROPOSED R.O.W. SHALL TO PROPERTY LINE TO A FOR POSSIBLE FUTURE E

FOUR TYPE 4 OBJECT MARKERS (SEE DETAIL 6 & 9) SPACING



- PRELIMINARY**
1. WATER: design and tested and approved by State and H. State.
 2. ELECTRIC: design and tested and approved by State and H. State.
 3. STORM: design and tested and approved by State and H. State.
 4. STREET: design and tested and approved by State and H. State.
 5. A Proposed parking.

TURNOVER PAVEMENT SECTION TO MATCH RIDGE HAVEN DRIVE SECTION.

TEMPORARY BRANCH TYPE TURNOVER PER FIGURE 4 OF YOUR APPROVAL.

PROPOSED R.O.W. SHALL TO PROPERTY LINE TO A FOR POSSIBLE FUTURE E.

FOUR TYPE 4 OBJECT MARKERS (SEE DETAIL 6 & 6 SPACING

Recommendation

Staff and Planning Commission (6-0) recommended approval of the preliminary plat with variances request.

