

URBAN FOREST MANAGEMENT MASTER PLAN

January 25, 2022



WHAT IS AN URBAN FOREST MANAGEMENT PLAN?

The Urban Forestry Management Plan is intended to provide

- Strategies
- Goals
- Policies
- Standards
- Actions to protect, enhance, expand, and preserve



HOW THE PLAN WAS CREATED

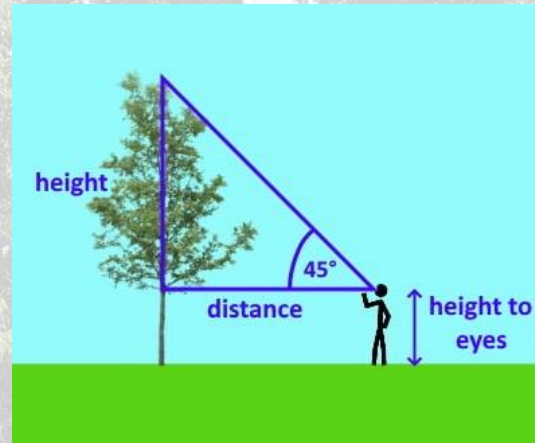
- Analyzing tree inventory data
- Incorporating citywide canopy cover information
- Obtaining public and stakeholder input
- Making data-driven, sustainable urban forest management recommendations
- Presenting a multi-year budget



TREE INVENTORY

Our inventory by the numbers:

- 100% of street trees
- 90% of trees on school grounds
- 50% of trees in parks
- 2,131 trees inventoried
- 48 genera and 78 species
- 87% in Good or better condition



- Tree Species
- Diameter
- Height
- Condition
- Location
- Maintenance Needs
- Maintenance Priority

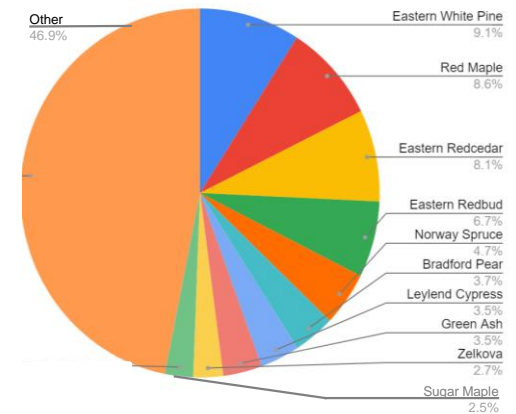
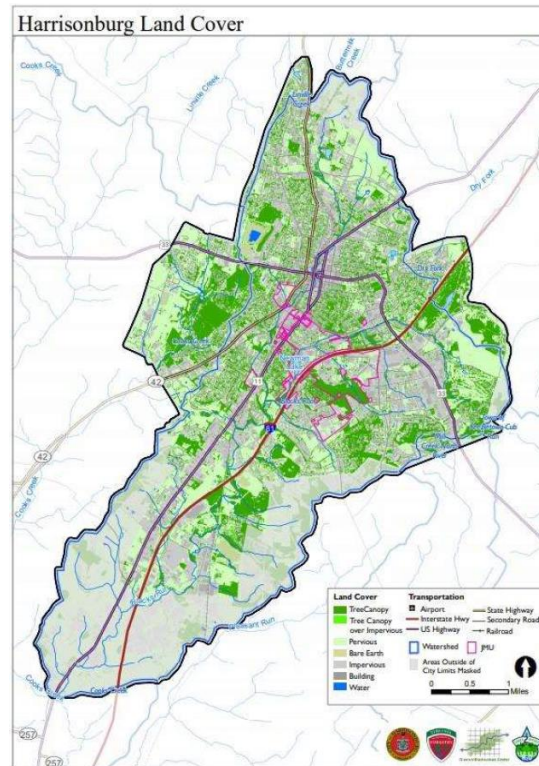
TREE CANOPY ANALYSIS

Harrisonburg's Tree Canopy covers just over 26% of the land in the City.

How do we compare?

Roanoke	48%
Charlotte, NC	45%
Waynesboro	43%
Richmond	42%
Front Royal	41%
Salem	40%
Falls Church	35%
Charlottesville	27%
Harrisonburg	26%
Abingdon	23%
Winchester	21%

Trees of Harrisonburg



BENEFITS

- Build Stronger, More Vibrant Communities
- Stormwater Management
- Create More Successful Business Districts
- Air Quality Improvement
- Greenhouse Gas reduction
- Buffers for noise and pollution
- Reduce Heat Island Effect
- Provide Wildlife Habitat
- Holds Soil In Place
- Reduce Energy Bills
- Pollinator Friendly



CITIZEN AND SHAREHOLDER INPUT

What did they have to say about Urban Forestry in Harrisonburg?

- More trees should be planted
- There should be greater diversity in the urban forest
- Greater access to urban forest education is needed
- The public wants to be engaged
- Regulations should be considered for protecting and/or replacing trees during land development and other construction projects.
- The City's urban forest management program staff are valued.



SUSTAINABILITY ANALYSIS RESULTS

There are three primary components of Harrisonburg's urban forest and management program that are indicators of a sustainable community forest and program. The components and their current ratings are:

- The Trees
Moderate/Good
- The Players
Low
- The Management Approach
Low/Moderate



STRENGTHS

- Current Urban Tree Canopy and Public Tree population provide significant benefits
- Data, Coordination, and Regulations provide a firm foundation for sustainability
- The Public Forest is managed by professional staff



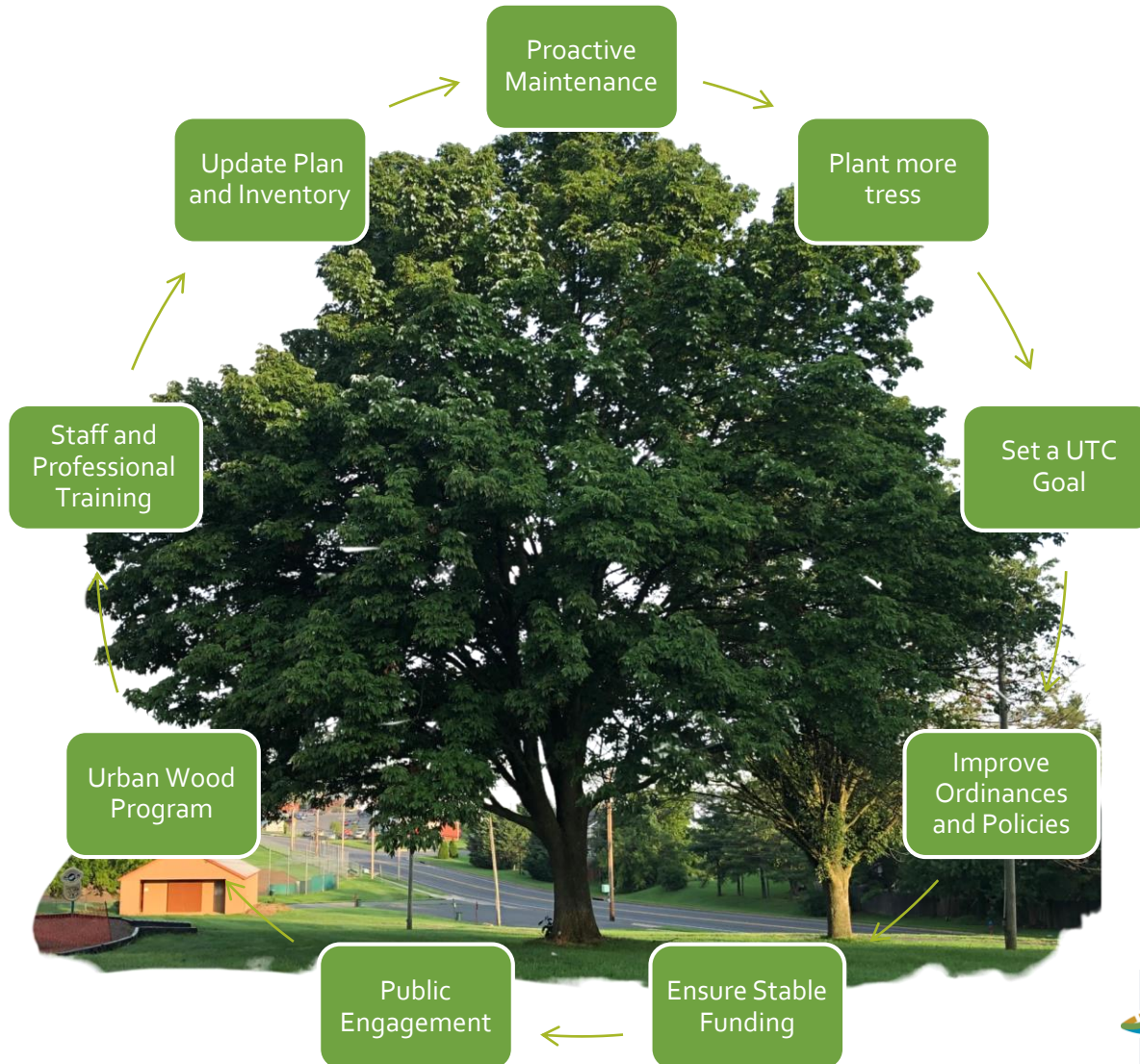
CHALLENGES

- Insect and disease threats are increasing
- Climate change
- Most trees are privately owned
- Land use history and future land use



Emerald
Ash Borer
Beetle

RECOMMENDATIONS



CONCLUSIONS

Trees are long-lived organisms, and by planting trees today the City is actually planting them to provide their benefits for future generations. However, by having systematic tree planting and maintenance programs in place, and by having adequate funding, staffing, regulations, and public education resources today, the current and future public tree population and overall urban forest will be expanded and sustainable.



URBAN FORESTRY

Is the care of our City's trees.

The Harrisonburg Urban Forestry Program manages trees on Public land because we recognize the importance of urban trees. Trees

- improve the air we breathe
- reduce noise
- filter water to help control stormwater runoff
- provide shade and habitat for a wide variety of living things, and
- beautify our urban landscapes.

Our Urban Forestry Team has the support of the City as well as the Virginia Department of Forestry, which provides grants to help manage trees in The Friendly City.

URBAN WOOD PROGRAM

Is focused on reusing felled trees.

In 2018, the emerald ash borer beetle descended upon the ash trees in the city, decimating them. There were more than 1,000 ash trees on public land there are 32 left.

So, what happened to all of the other trees? The Urban Forestry Team is working to remove the dead and dying ash. Once the ash are removed our team looks for ways to reuse the wood, keeping it out of the landfill. You may have seen some of the re-posed ash and not even realized it. You can find it as mulch in city pollinator spaces, planter boxes around Downtown, benches in some of our parks, the table this sign sits on, and purchased by local woodworkers for use in their craft.



URBAN FORESTRY



CITY OF HARRISONBURG
PUBLIC WORKS