

NEIGHBORHOOD TRAFFIC CALMING PROGRAM: PORTLAND EAST NEIGHBORHOOD

June 14, 2022



Background

- December 2017 – Increased enforcement, Team Up to Slow Down
- April 2018 – Neighborhood meeting, Council-approved traffic study
- May 2018 – Study completed, neighborhood petition completed
- June 2018 – City Council enrolled neighborhood in program
- August 2018 – Neighborhood representatives meeting
- October 2018 – Open house meeting to present Traffic Calming Plan
- November 2018 – City Council adopted Traffic Calming Plan
- 2019-2020 – All Traffic Calming Plan measures implemented
- 2020-2021 – Traffic studies completed
- 2021-2022 – Staff meetings with VDOT and neighborhood representatives regarding data, concerns and additional steps

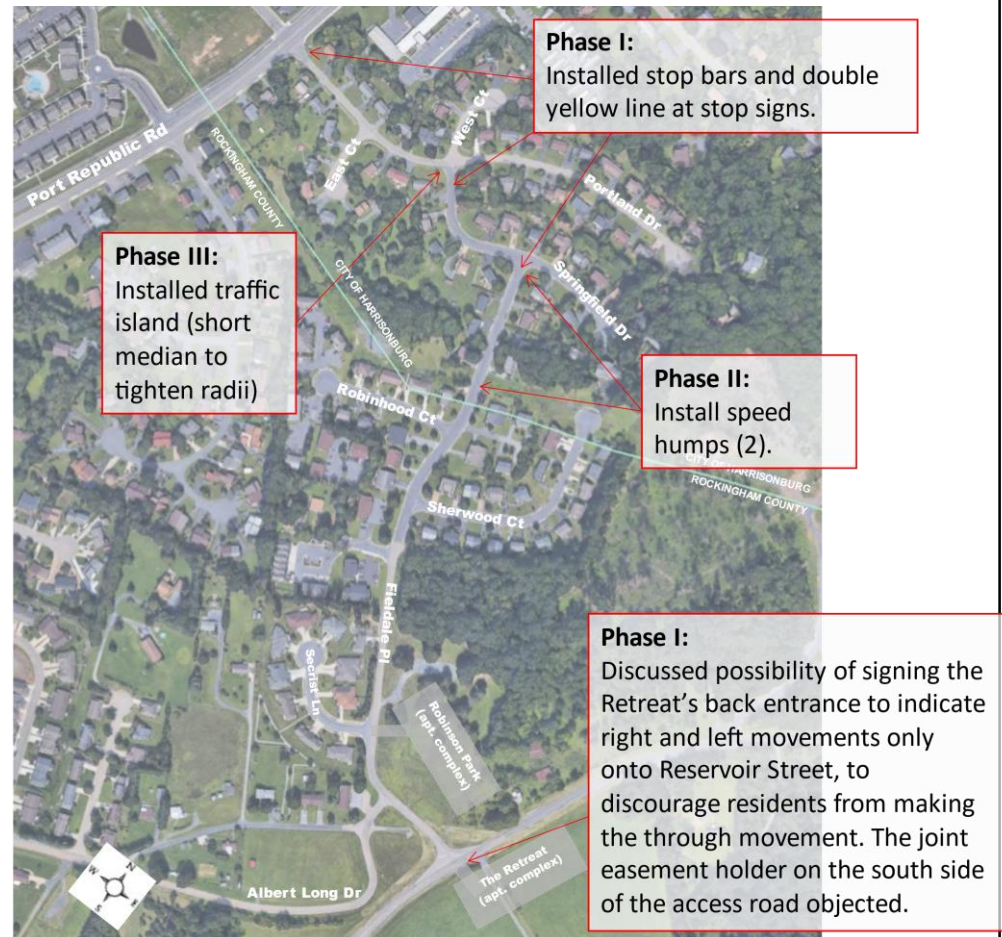
Traffic Calming Plan Completed

All Phases Completed

Concerns Addressed:

- Speed of vehicles
- Intersection turning movements - islands
- ‘No Thru Trucks’ posted
- ‘No Outlet’ posted on dead-end road segments

Additionally: recent signal retiming of Reservoir St corridor



Traffic Study results

- Installation of speed humps and intersection measures reduced vehicle speeds in the neighborhood.
- Traffic volumes showed an approximately 20-25% increase between 2018 and 2021
 - Likely due to nearby development
 - Indicates that current traffic calming measures have not notably discouraged cut-through traffic
- Late-night traffic volumes have been identified as a concern

Proposed Action

- Install “No Thru Traffic” signs on Portland Dr at Port Republic Rd and on Fieldale Pl at Reservoir St
- The necessary coordination with VDOT has been completed
- Restriction does not impact access for City or County residents who live between Port Republic Rd and Reservoir St
- Enforcement of the restriction by HPD
 - When drivers are observed traveling through the neighborhood, in either direction, between Port Republic Rd and Reservoir St
 - Enforcement at all times of day
- Public Works staff will communicate the change to Waze and Google Maps

Next Steps

- Summer 2022 – Implement “No Thru Traffic” restriction, communicate restriction to Google Maps and Waze, and begin enforcement
- Fall 2022 – Ensure adequate enforcement and education to discourage university students from using this route
- Fall 2022 – Conduct traffic study and evaluate results