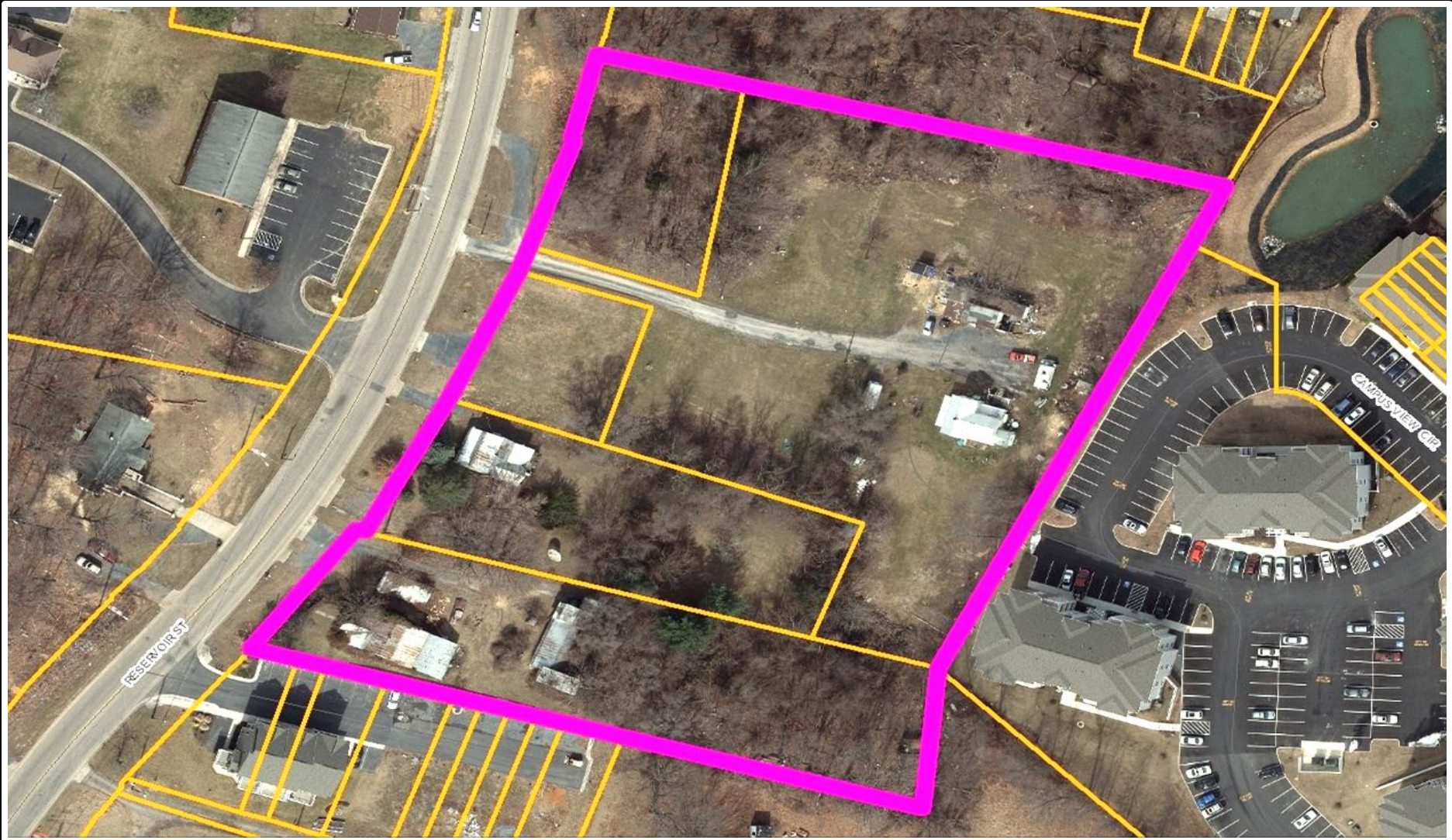


Special Use Permit – Campus View (More than 12 units per building)



- No more than 42 additional units constructed on the subject properties beyond those approved by SUP in August 2014 and as shown on the ECSP approved on April 13, 2016.
- There shall be 19 additional trees (beyond the landscaping requirements located along the southern property boundary).
- There shall be 13 buildings with no more than 174 units.





Once completed the entire 11.37 acre development known as Campus View Apartments will consist of 13 residential buildings with a total of not more than 174 units, and one clubhouse/community building.



Recommendation

Staff and Planning Commission (6-0) recommended to approve the SUP request as submitted by the applicant.

